

DSS DEEP DIVES

Breaking the Cycle:
Understanding How to Support
Students Navigating Interpersonal
Violence, Sexual Misconduct, &
Domestic Violence

Agenda



- 1 Introduction
- 2 Overview of IPV/Dating/Domestic Violence
- 3 Understanding IPV Cycle and Stalking
- 4 Overview of Sexual Assault
- 5 How to Support Students
- 6 How Advocates Can Help
- 7 Resources

Take Care of Yourself



- National Domestic Violence Hotline 24/7
 - 1-800-799-SAFE (7233)
- Sex Abuse Treatment Center Hotline 24/7
 - (808) 524-7273
- Hawai'i CARES 988 Hotline 24/7
 - 988
 - (808) 832-3100

About Me...

Licensed Social Worker

Previous Work Experience:

- National Center for PTSD -Dept of Veterans Affairs
- Girls Court - Probation Officer
- Navy - FAP Advocate
- Leeward CC - Title III Counselor
- Queens West O'ahu - Inpatient social work

My Current Role:

Confidential Advocate (Title IX EP/AP 1.204)

Sex- or gender-based discrimination, harassment, and violence (Sexual assault, Dating/Domestic Violence, & Stalking)



What is IPV?



Intimate partner violence refers to behavior within an intimate relationship that causes physical, sexual or psychological harm, including acts of physical aggression, sexual coercion, psychological abuse and/or controlling behaviors. This definition covers violence by both current and former spouses and partners. (W.H.O.)

Domestic violence is a **pattern** of abusive behavior in any relationship that is used by one partner to gain or maintain **power and control** over another intimate partner. Domestic violence can be physical, sexual, emotional, economic, psychological, or technological actions or threats of actions or other patterns of **coercive behavior** that influence another person within an intimate partner relationship...(DOJ, Office on Violence Against Women)

INTIMATE PARTNER VIOLENCE


DOMESTIC VIOLENCE

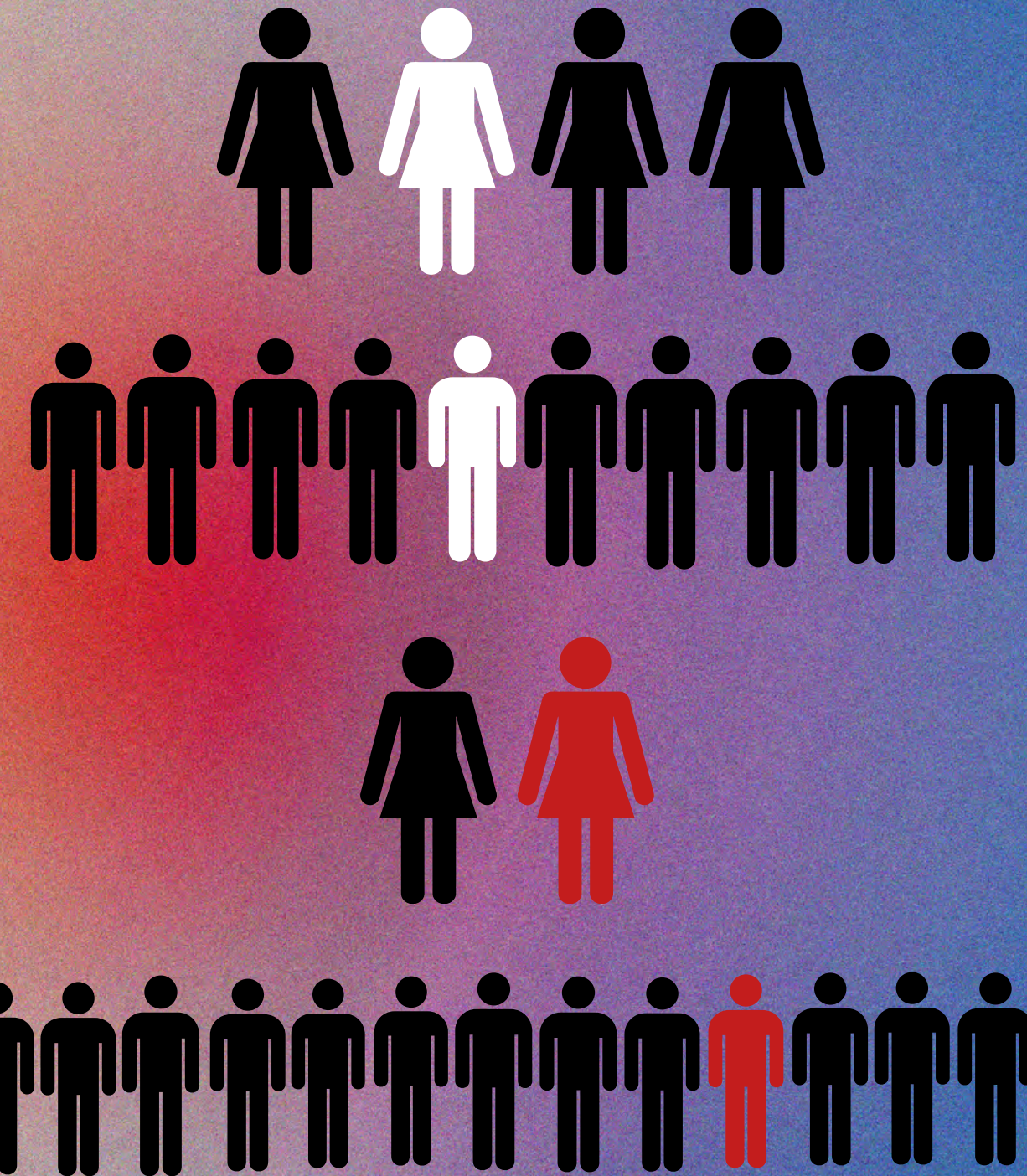
DATING VIOLENCE

Statistics on IPV

1 in 4 women and **1 in 10 men** experience sexual violence, physical violence, and/or stalking by their intimate partner during their lifetime.

1 in 2 female murder victims and **1 in 13 male** murder victims are killed by intimate partners.

 Many studies report that IPV occurs at similar or higher rates among LGBTQ+ individuals as compared to their heterosexual and cisgender peers. (Davis & Crain, 2024)



Power & Control Wheel



Understanding the Duluth Power and Control Wheel by Scott Miller, ED of DAIP

Power & Control Wheel

THE DULUTH MODEL

- DEVELOPED IN 1984, DULUTH, MINNESOTA
- DOMESTIC ABUSE INTERVENTION PROJECT (DAIP)
- THE WHEEL WAS CREATED BY GATHERING INPUT FROM BATTERED VICTIMS

POWER AND CONTROL WHEEL ADAPTATIONS:

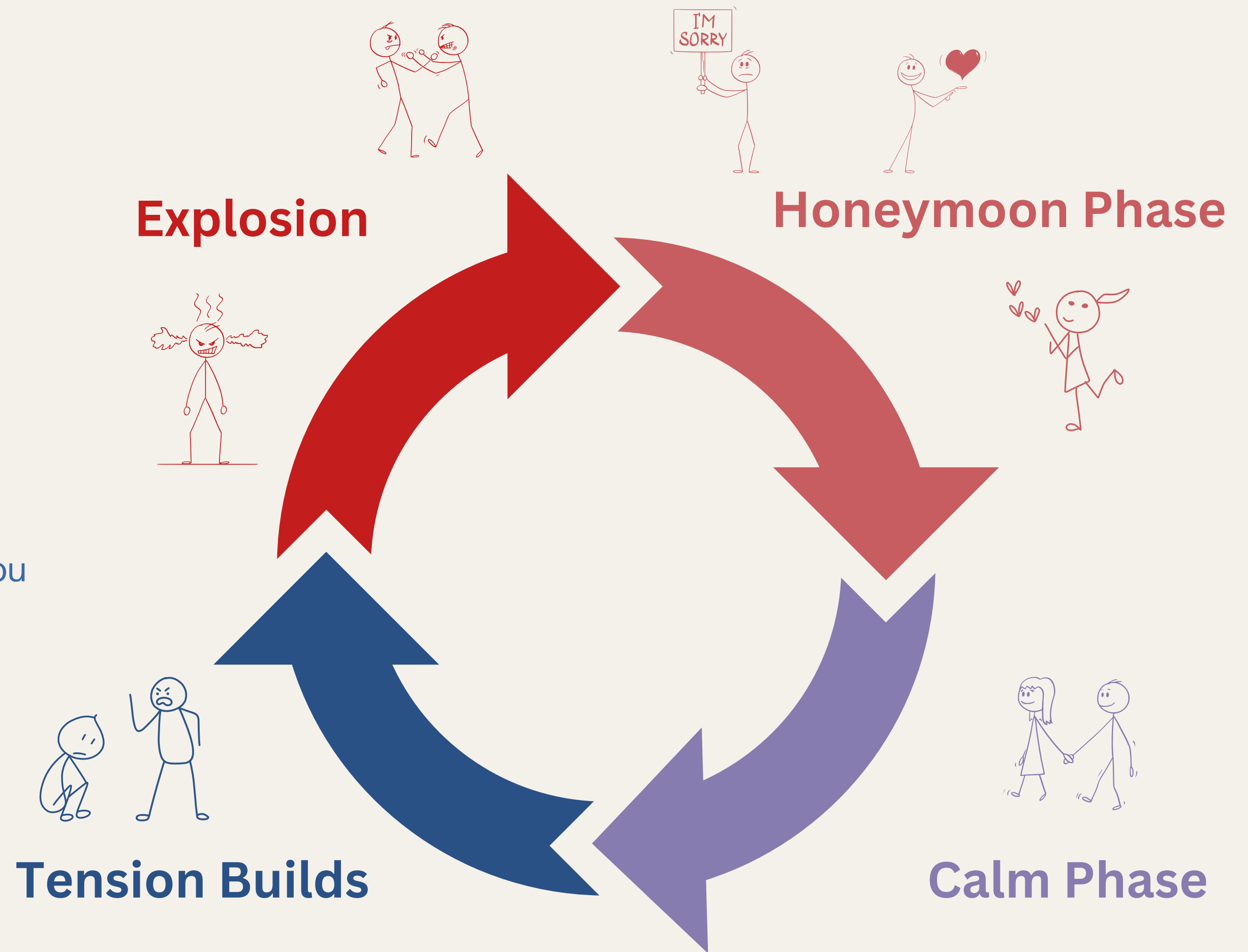
- [HTTPS://WWW.THEDULUTHMODEL.ORG/WHEEL-GALLERY/](https://www.theduluthmodel.org/wheel-gallery/)



Cycle of Violence

Love - Hope - Fear - Repeat

Do you remember a time when you were first falling in love?



Why not leave?

- Leaving an abusive relationship can be dangerous!
 - 72% of all murder-suicides involve an intimate partner (NCADV, 2020)
 - 75% of domestic violence related homicides occur upon separating for at least 2 years afterward (Center for Relationship Abuse Awareness)
 - 76% of women murdered by an intimate partner were stalked first (NCADV, SPARC)



Stalking can occur before, during, and/or after a relationship.

(Infographic adapted from SPARC; Tjaden, P. & Thoennes, N. (1998). Stalking in America: Findings from the National Violence Against Women Survey (NCJ#169592). Washington, DC:

IPV, Lethality & Stalking



Theresa Cachuela
Dec 2023

- Murder-suicide by her spouse
- TRO granted 2 weeks prior



Dana Alotaibi
July 2022

- Murdered by ex-spouse who filed the divorce
- Divorce was granted one month prior

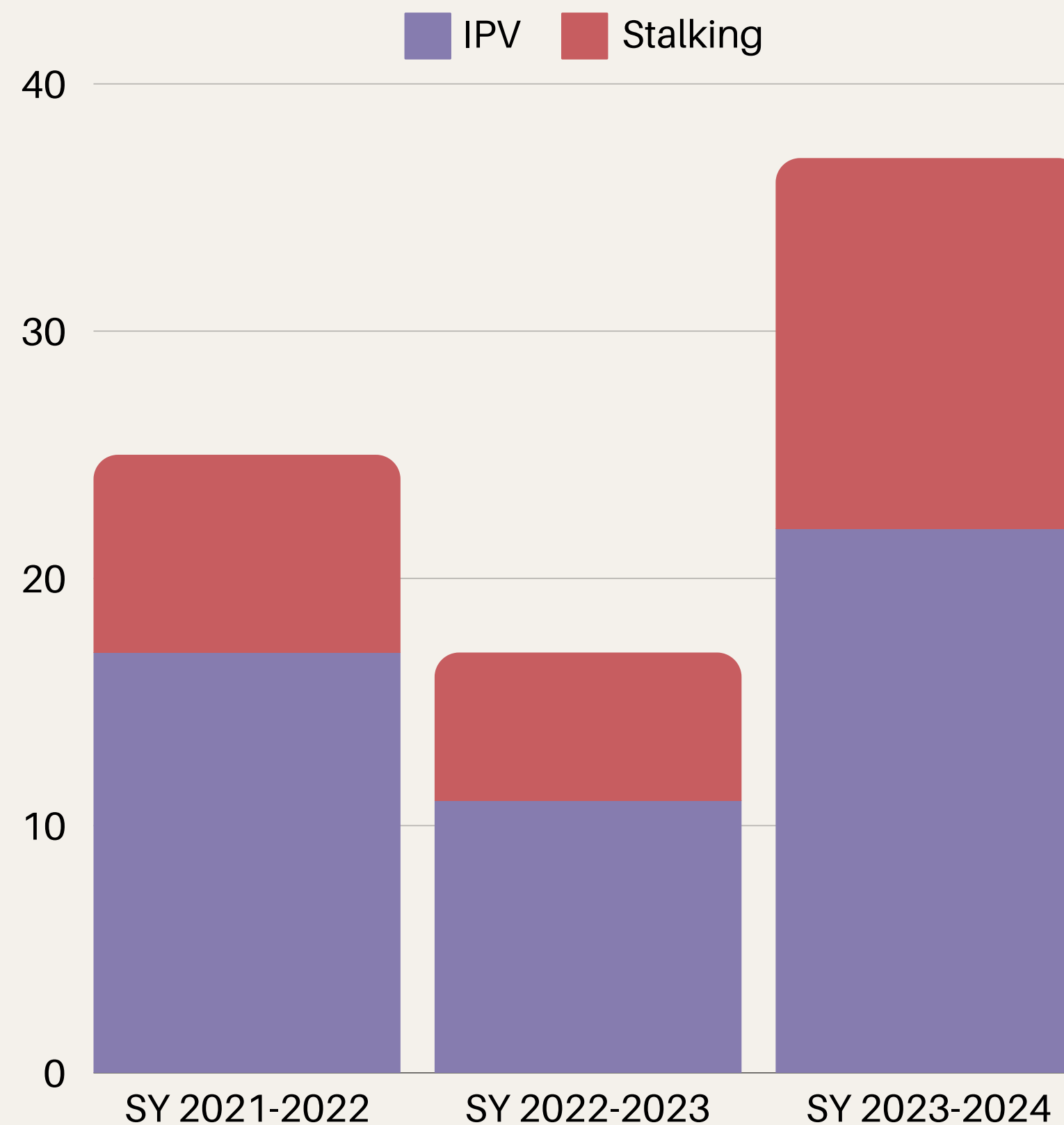


Kehau Farias Schmidt
April 2016

- Murdered by estranged husband
- TRO was granted 1 week prior

Confidential Advocate IPV & Stalking Numbers

This data represents the new referrals made to the UH Mānoa Advocate over the past 3 years.



Sexual Assault

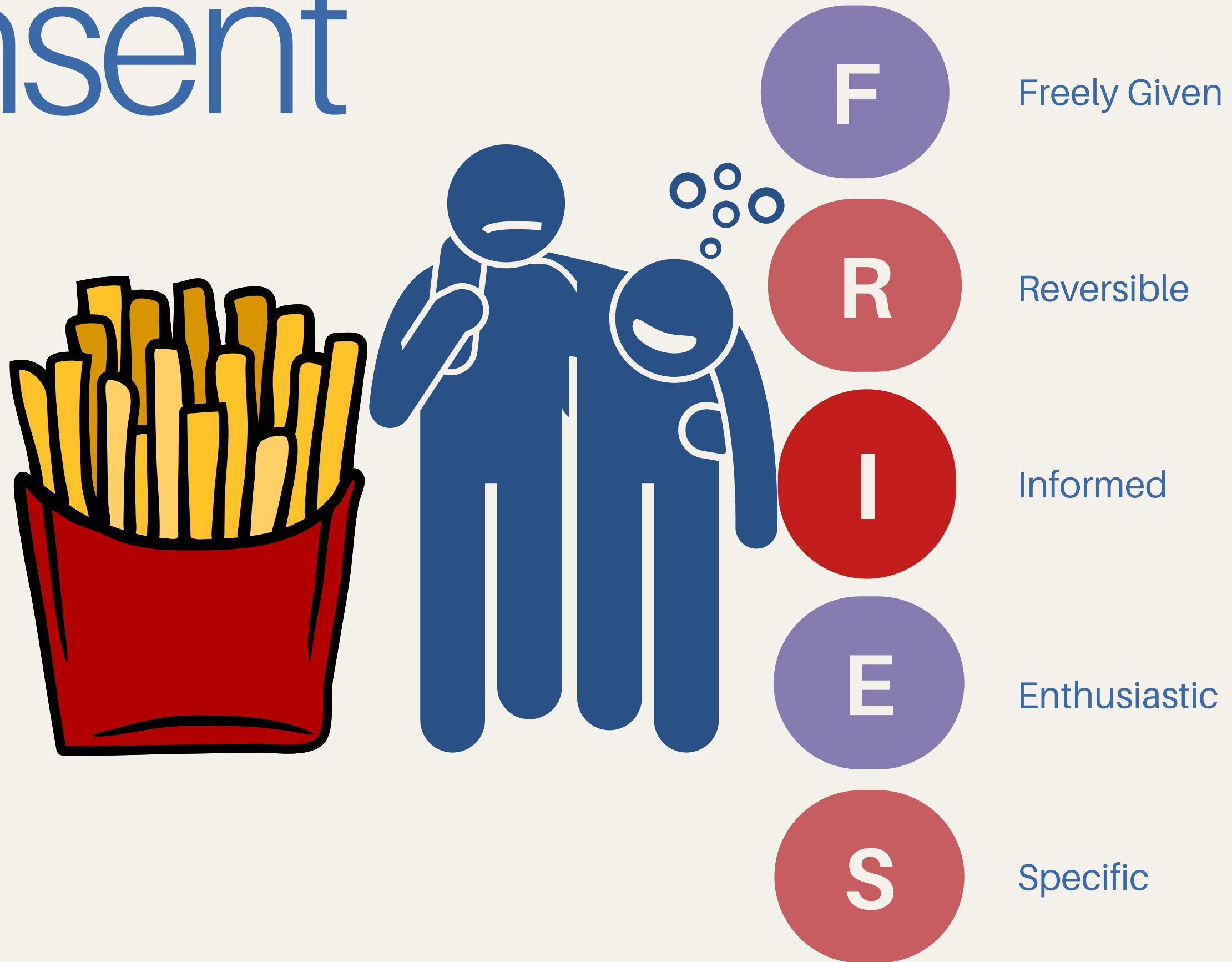
Title IX (EP 1.204) Definition of Sexual Assault includes:

- Rape (sexual intercourse)
- Sodomy (oral or anal sexual intercourse)
- Sexual Assault with an Object (object penetration of genital/anal opening)
- Fondling (genitalia, groin, butt, or breast)
- Incest (nonforcible sexual intercourse between related persons wherein marriage is prohibited by law)
- Statutory Rape (Under age of consent)

CONSENT IS KEY!!!

20.6% OF REFERRALS ARE SEXUAL ASSAULTS

Consent



True or False

Most victims of sex assault report the incident to Law Enforcement.

False!

Rape is the most underreported crime. 63% of sex assaults are not reported to police.

(2015, National Sexual Violence Resource Center)



Spotting the Warning Signs

1

Changes in
baseline behavior

2

Changes in
attendance
pattern

3

A drop in
assignments or
performance

4

Emotional
Dysregulation

5

Physical
Appearance

6

Disclosures

When a student makes a disclosure..

All employees who are not designated as confidential are required to report disclosures of Sex-based discrimination or harassment (inclusive of sexual misconduct) to the Title IX office.

Practice your responses!

- Remind students of your responsibilities
- Remind students of available confidential resources
- Remind students that the Title IX office is also there to ensure safety and support

DO NOT PANIC

STATE YOUR RESPONSIBILITIES

ACTIVELY LISTEN

OFFER REFERRALS AND RESOURCES

FOLLOW-UP



CONTACT TITLE IX FOR RESOURCE CARDS
T9UHM@HAWAII.EDU | 808-956-2299

Other Tips to Consider

- Include language about Title IX and Confidential Resources in your syllabus
 - (<https://manoa.hawaii.edu/titleix/sample-title-ix-syllabus-template/>)
- Consider sending out periodic reminder emails about campus resources
- Seek consultation

Meet the Advocates

The Confidential Advocates serve students and employees at UH Mānoa to provide a safe and confidential space to seek support, consultation on options, connection to resources, and safety planning as needed.



“We are all here on Earth to help others; what on Earth the others are here for I don’t know.” - W.H. Auden



Jill Nunokawa
Interim Director for C.A.R.E.S.
Civil Rights Specialist
Title VI/VII (race, color, national origin, and etc)



Jamie Newalu
Mānoa Advocate
Title IX (sex- or gender-based discrimination, harassment or violence)



Haydee Jutz
General Advocate
Graduate student concerns
Workplace non-violence
Student Conduct/Academic Grievances
Miscellaneous

Confidentiality

Victim-Counselor privileges are extended to designated campus “confidential advocates” who assist victims seeking help for sexual harassment, sexual assault, domestic violence, dating violence, stalking, and related issues.

(Act 084 RELATING TO VICTIM-COUNSELOR PRIVILEGE)

Limits of Confidentiality

MINOR OR VULNERABLE ADULT
BEING ABUSED OR NEGLECTED

STATEMENTS OF IMMINENT SERIOUS
HARM TO SELF OR OTHER

TIMELY WARNING (CLERY ACT)



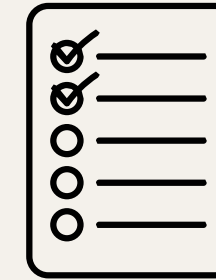
OTHER CONFIDENTIAL RESOURCES ON CAMPUS:
COUNSELING & STUDENT DEVELOPMENT CENTER
DOCTORS/NURSES AT UH HEALTH SERVICES
KA MALU A WA'A'HILA
RAINBOW WELNESS



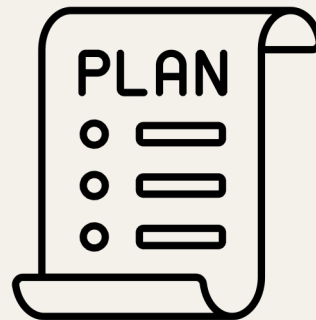
@manoa-advocate



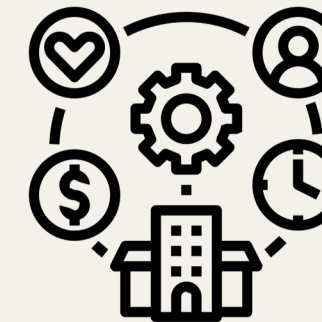
Supportive
Counseling
(trauma informed
care)



Review Options
(internal and external
options & procedures)



Safety Planning
(help develop plans to
address safety)



Resource Referral
(on-campus and
community resources)



Process
Support or
Advisor
(Serves as advisor
on TIX cases)



Assist with
Educational
Success
(ex: helping navigate
processes, letters of
support, etc)



**ADVOCATE
SERVICES**
 QLCSS 210
 808-956-9977
MANOAAADV@HAWAII.EDU

- **Appointments are first-come-first-serve (scheduling ahead is advised)**
- **Advocate office is open M-F 8:30am-4:30pm (excluding state holidays)**

Other Local Resources

Domestic Violence Action Center

- O'ahu Legal Helpline 808-531-3771
- Textline 605-956-5680

National Domestic Violence Hotline

- 24/7 Hotline 1-800-799-7233
- Text BEGIN to 88788

Hawai'i CARES 988

- 24/7 Crisis Hotline 988 or 808-832-3100

Sex Abuse Treatment Center

- 24/7 Hotline 808-524-7273

Thank you

MĀNOA C.A.R.E.S.

QLCSS 210

808-956-9977

JAMIE NEWALU

808-956-9499

MANOAAADV@HAWAII.EDU

QLCSS 210