

# AI 101

## A Learning Specialist's Guide to How AI Has Changed the College Landscape

 by Erika Huddle

University of Hawai'i Mānoa

Academic Advisor & Learning Specialist

Student-Athlete Academic Services





# Taking time to acknowledge...

## UNIVERSITY OF HAWAII MANOA

E ho'omālamalama i kō mālama

Cultivating the potential within each  
member of our community

MISSION: Located in the most diverse community and environment in the world, the University of Hawai'i at Mānoa has a kuleana (responsibility) to serve the people and places of Hawai'i, and our neighbors in the Pacific and Asia. We cultivate leaders who mālama (care for) our people, our places, and our ways of knowing to sustain and transform our islands and the world.

# Why Me?



## K-12 Educator & Behavior Therapist

Extensive experience in public and private specialized schools supporting students with learning disabilities.



## Higher Education

Current role as learning specialist and academic advisor for student-athletes at the college level.



## AI Transition Witness

First-hand experience of how ChatGPT transformed academic support and student learning practices.



## Researcher

Pursuing PhD focused on AI's impact on learning, especially for students with learning differences.

# Debunking Student-Athlete Myths

## Academic Performance

Research shows no statistically significant GPA differences between student-athletes and non-athletes.

## Major Selection

Student-athletes demonstrate similar distribution across fields of study as their non-athlete peers.

## UH Mānoa Student-Athlete Spring 2025 GPA Highlights:

- Cumulative GPA: 3.25
- Semester GPA: 3.20
- 70% of SAs above 3.0 CUM GPA

Eldridge et. al (2014)



# Understanding the AI Revolution

1

## Artificial Intelligence

Term coined in 1955 describing computer systems designed to perform tasks that typically require human intelligence, including learning, problem-solving, and decision-making.

2

## Large Language Models

AI systems trained on vast amounts of text data that can understand and generate human-like language. Models like ChatGPT which produce coherent responses across subjects.

3

## Generative AI

A newer subset of AI that generates content based on prompts and training data. Since ChatGPT's launch in November 2022 it has become a common academic tool.

4

## AI Hallucinations

False or misleading information confidently presented by AI systems as factual. These occur when AI "fills in gaps" with plausible but incorrect information.



## College Student Perceptions of AI Usage – Recent Research

- 1** **Widespread Adoption**  
Students are using it in a range of academic contexts.
- 2** **Global Reach**  
Research is extensive globally, possibly more outside the US.
- 3** **Many Reported Benefits**  
Students consistently report benefits such as increased efficiency, personalized support, enhanced motivation, and improved academic confidence.
- 4** **Minimal Drawbacks**  
Minimal disadvantages cited in research. Of those noted were accuracy issues, reduced personalization in feedback, and diminished instructor connection.

Huddle (2025)

# Student Perceptions: SAAS Survey on AI Usage

To better understand the impact of AI on our students' academic journey, we conducted an IRB-approved study at the Academic Learning Center.

SAAS AI Usage Survey Summer 2025



A comprehensive research collaboration between Erika Huddle and Tiffany Liu exploring how student-athletes utilize artificial intelligence tools in their academic work. IRB approved.

 Gamma embed

## SAAS AI Usage Survey Summer 2025

A comprehensive research collaboration between Erika Huddle and Tiffany Liu exploring how student-athletes utilize artificial intelligence tools in their academic...



# Understanding AI in the Educational Context – What can it do?



## Content Generation

AI tools create essays, summaries, outlines, and other written materials based on simple prompts, raising questions about authorship and originality.

- ChatGPT
- Perplexity



## Learning Support

Adaptive learning platforms tailor educational content to individual students' needs, providing personalized feedback and identifying knowledge gaps.

- Kahnmigo
- Tutor AI



## Research Assistance

AI research tools can analyze vast amounts of literature, generate literature reviews, and help students find relevant sources more efficiently.

- Elicit
- Notebook LM



## Presentations and Demo Tools

Make presentations with AI prompts or existing documents, create demonstration tools or step-by-step guides for students.

- Gamma
- Canva

# Challenges and Concerns with Academic AI Use



## Skill Atrophy

Critical thinking and writing abilities may decline with overuse



## Academic Integrity

Unclear boundaries between assistance and cheating



## Data Privacy

Student work processed through commercial AI systems



## Access Inequality

Disparities in tool availability across student populations



## Impact to environment

Water and power usage a serious concern

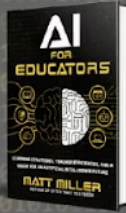


## Exponential Growth

Fastest growing technology may result in unrecognized impacts

# Did they use AI for their paper?

## CLASSROOM AI USE: WHAT'S CHEATING? WHAT'S OK?



### Questions to ask:

- What's OK? What's not? For whom?
- For what work? Under what circumstances?
- What work best prepares students for THEIR future?
- Where do you draw the line for your students?
- At what point is it student's work and no longer AI?

- AI does student work for them with no thought by the student
- AI writes content but student edits it based on learning from class
- Student re-writes AI-generated content with own improvement ideas
- AI generates multiple drafts; student chooses best parts of AI drafts
- Student writes bullet points to include but AI writes the draft
- AI guides student through writing process as a "writing coach"
- Student creates content until stuck; asks AI for help to get "unstuck"
- Student writes a draft; AI writes a draft; student adds best AI ideas
- Student gathers stats/research via AI but creates all content on own
- Student consults internet/AI for writing ideas but creates content on own
- Student writes all content but asks AI for feedback to improve
- Student does all work without any assistance from AI, the internet, etc.



Graphic created by Matt Miller of Ditch That Textbook.  
For more, visit [DitchThatTextbook.com/ai-cheating](https://DitchThatTextbook.com/ai-cheating)



**DITCH THAT  
TEXTBOOK**

# Why AI Literacy Matters for Academic Advisors



## Student Adoption

AI tools are becoming standard in student workflows across disciplines



## Expanding Usage

Research indicates AI adoption will continue to accelerate on campuses



## Academic Integrity

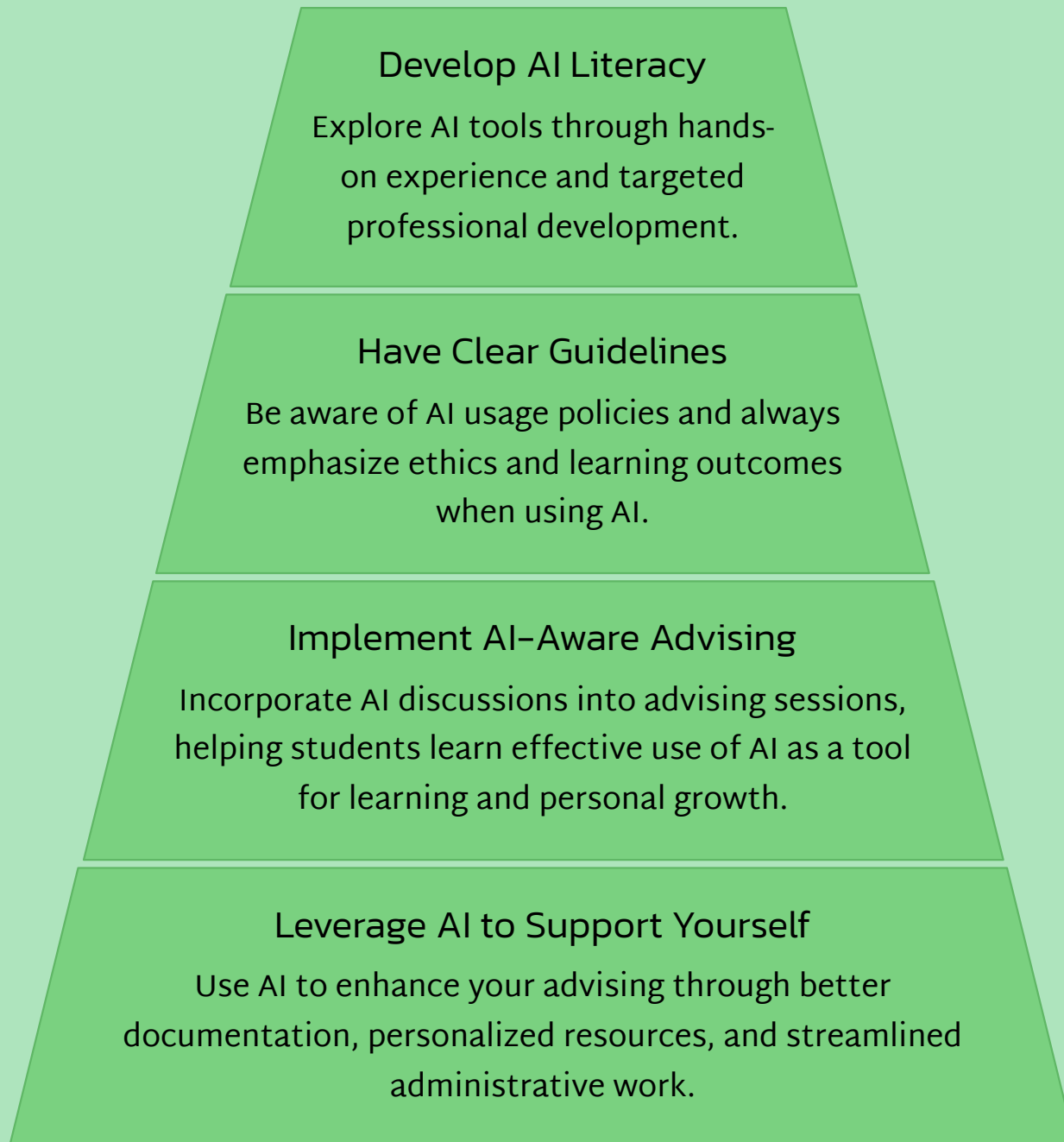
New challenges require updated approaches to maintaining educational standards



## Institutional Response

Departments can support university in developing effective policies addressing AI integration

# Integrating AI Awareness into Academic Advising





## Navigating AI Accusations: An Advising Scenario I

A student, accused of AI use on a midterm, comes to you upset. How do you advise?



## An AI aware response:

### Review AI Policies & Expectations

Clarify institutional and professor's AI usage policies, emphasizing acceptable boundaries and academic integrity.

### Assess Fairness and Context

Investigate the accusation specifics, checking policy clarity and potential unfair targeting. Inform students of their rights and appeal options.

### Educate on Ethical AI Use

Guide students on ethical AI use as a learning tool, stressing critical engagement, proper citation, and ensuring outputs reflect their own work.



## An Advising Scenario II:

"I want to go to nursing school, but not as a pre-nursing major."

A student expresses a desire to be a nurse but is not able to meet the requirements of the pre-nursing major. How do you guide them toward suitable options?

01

### Understand Requirements

Clarify prerequisites for nursing graduate programs and the student's core interests.

02

### AI for Alternative Majors

Use AI to generate a list of suitable majors that fulfill nursing school prerequisites while aligning with student preferences.

03

### Review & Refine

Discuss AI-generated options, explore potential minors, and plan for necessary prerequisite coursework.



## The AI Prompt & Response

### The Prompt:

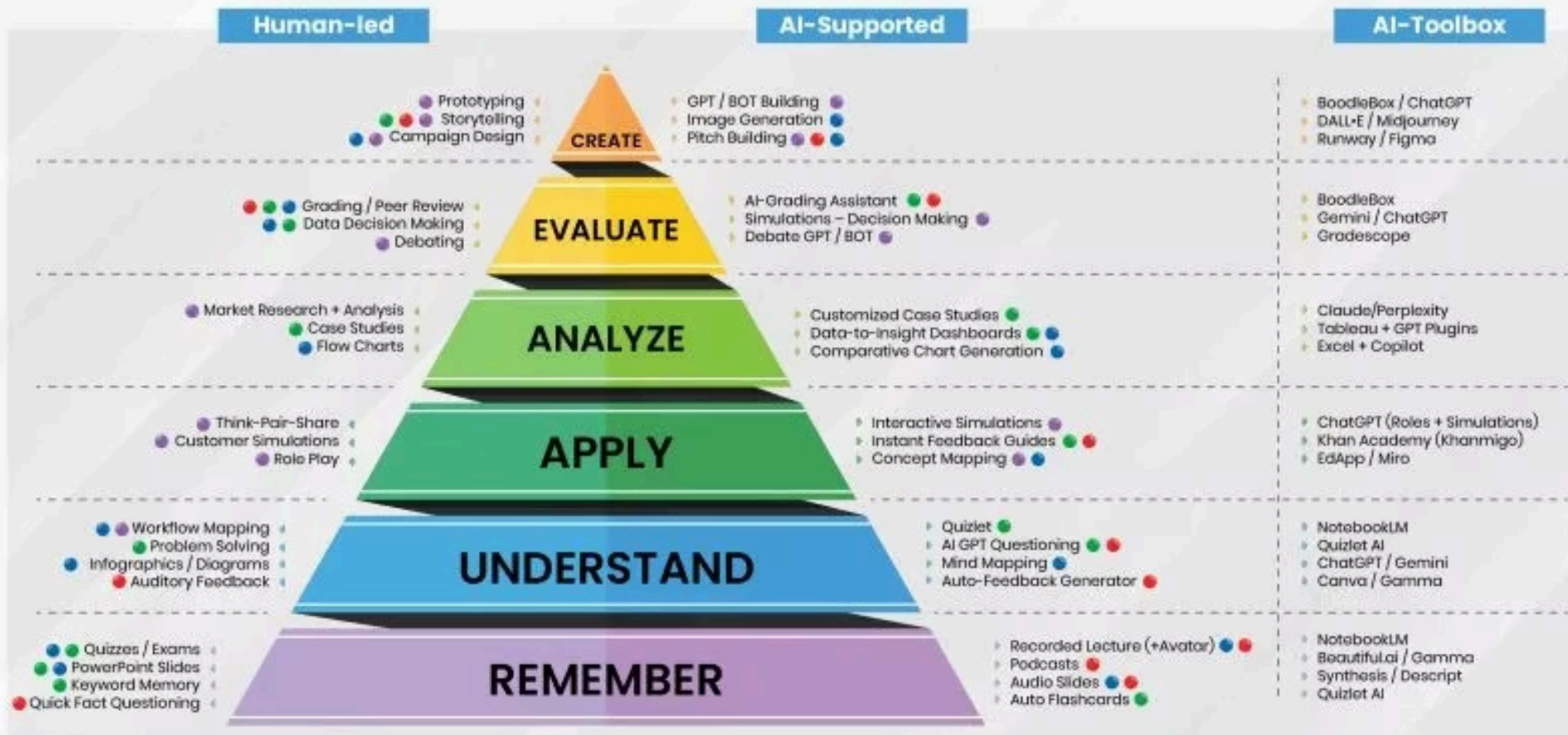
student wants to be a nurse but cannot be a pre-nursing major at UH; which majors may he be able to take instead and still take the pre-nursing requirements throughout his time getting a degree in a nother major so he is prepared for grad school in nursing - act like his academic advisor at UH and give me a four year plan with options of majors for him

The AI's response can be found here: [AI Response Document](#)

Our prompts will determine where we fall on the pyramid.

# THE BLOOM-AI FRAMEWORK

AI supports foundational knowledge; human educators develop higher-order cognitive skills.



## VARK KEY

Visual

Auditory

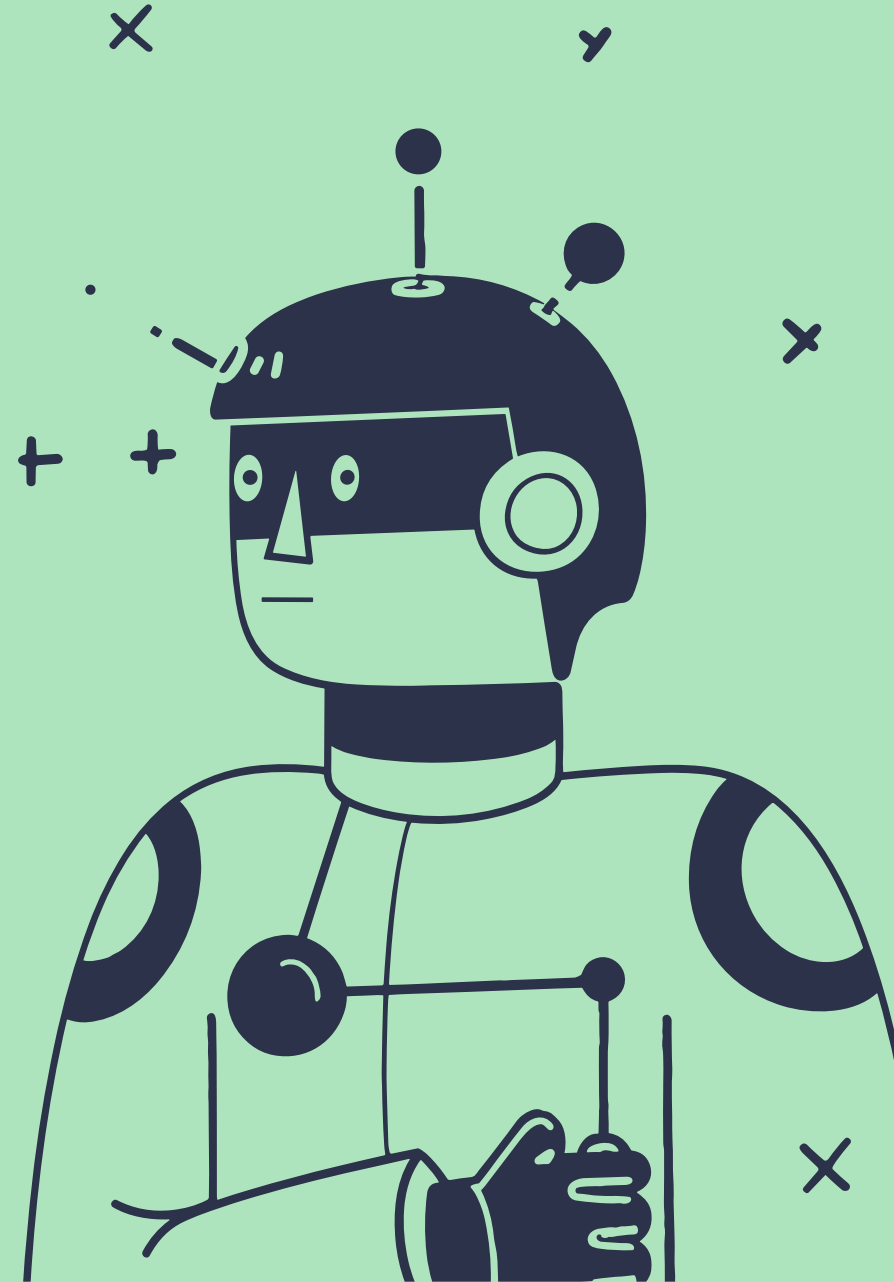
Reading

Kinesthetic

# PROMPTS ARE KEY

Prompts to try in advising to support your students:

1. **Schedule optimization:** "Create an ideal weekly schedule incorporating this school schedule, work hours, meals, and 3 hours of studying."
2. **Career exploration:** "Based on these interests, what careers match? Include salary data and demand forecasts." "Where can I find an interest inventory?"
3. **Time analysis:** "Review my calendar and identify optimal chunks of free time for productivity."
4. **Study enhancement:** "Create customized practice questions on [topic] to help my student be successful on my midterm."



# Did You Know?



## Celebrity Voice Synthesis

Speechify can read articles using Snoop Dogg, Gwyneth Paltrow, or Mr. Beast's voice.



## Personal Image Generation

One selfie can create fantasy scenes of you looking like your from Game of Thrones.



## Interactive Learning Podcasts

Upload articles to Notebook LM to create engaging podcast summaries with co-hosts.



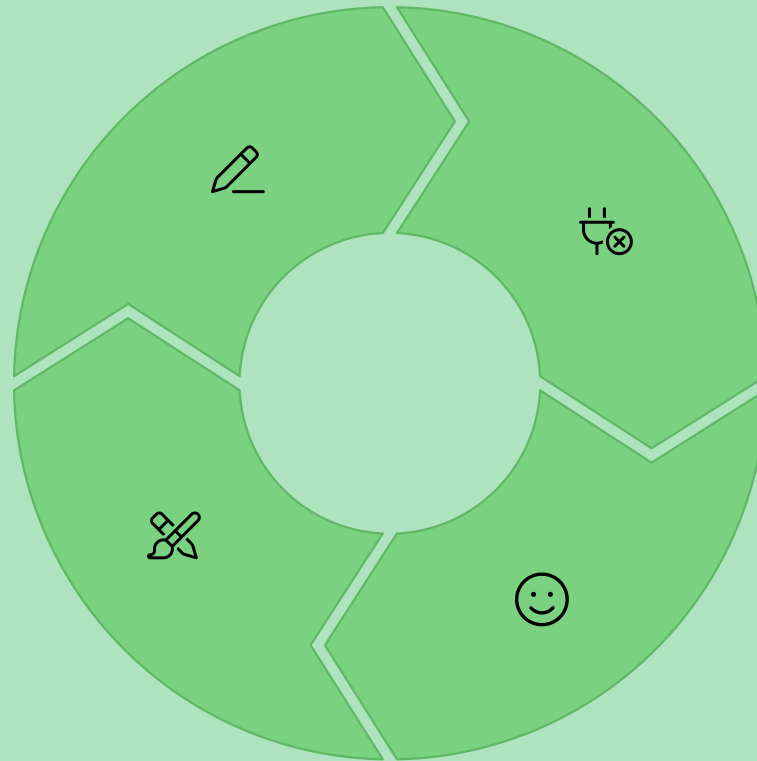
## Beyond Imagination

AI capabilities continue expanding, transforming how students interact with information.

# What keeps me up at night?

What if we don't write anymore?

Why do students have no confidence in their own creative thoughts?



Is there too deep of a disconnect between professor/faculty and student?

Am I being kind enough to AI?

# What helps me sleep?

I will not let fear guide my decisions.

I embrace how new technology can improve my outcomes and help me reach my personal goals.



I choose to walk alongside my students while they navigate this new zeitgeist.

I AM being kind enough to AI.

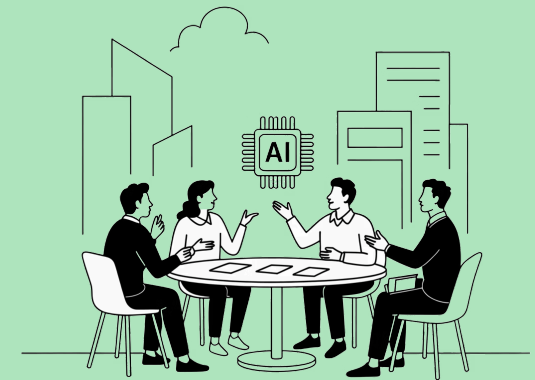
# Mahalo!

Thank you for joining me today!

MY CONTACT CARD:



QUESTIONS/COMMENTS:



ERIKA HUDDLE – EHUDDLE@HAWAII.EDU – 808-646-0719

---