

Student Parents At Manoa Scholarship Packet



Included in this packet:

- Overview of Sources of Financial Aid
- Timeline
- Completing the FAFSA (Free Application for Federal Student Aid)

- How to apply for Scholarships
 - Applying for Private Scholarships
 - How Scholarships Affect Financial Aid
 - How to Petition for Additional Financial Aid
 - Sample Letter of Petition

- Tips for your Personal Statement or Essay
- Sample Personal Statement
- Recommendation Letters
- Community Service
- Scholarship Searches “These are worth your while”
- Other Private Scholarships for Women, Parents, Minorities List
- Scholarship Applications Checklist

Compiled by: Lori Sakaguchi @ Kapi’olani CC Single Parents Program &
Student Parents At Manoa (SPAM)

956-8059 ** gotkids@hawaii.edu ** www.manoa.hawaii.edu/studentparents

Updated January 2015

OVERVIEW OF SOURCES OF FINANCIAL AID

FINANCIAL AID SOURCES ELIGIBILITY CRITERIA TYPES OF AID AVAILABLE HOW TO APPLY

<p>1. FEDERAL GOVERNMENT</p>	<p>Demonstrated financial need (FAFSA)</p> <p>Enrollment in an approved program of study, usually on at least a half-time basis (UH system—6credits is half-time)</p>	<ul style="list-style-type: none"> • Pell Grant • Supplemental Education Opportunity Grant (SEOG) • Federal Work Study • Perkins and Stafford Loans 	<p>Fill out the FAFSA at www.fafsa.ed.gov</p> <p>WATCH YOUR DEADLINES File by UH Manoa’s priority deadline of ‘March 1st’ to get the best financial aid package.</p> <ul style="list-style-type: none"> • 1st come 1st served.
<p>2. STATE GOVERNMENT</p>	<p>Demonstrated financial need (FAFSA)</p> <p>Some of these types of aid are offered to students based on academic performance (GPA)</p>	<ul style="list-style-type: none"> • Tuition waivers • Hawaii State Incentive Grant (HSIG) • State Higher Education Loan (SHEL) 	<p>File the FAFSA</p> <p>Separate application may be required (See financial aid office).</p>
<p>3. PRIVATE SOURCES</p> <ul style="list-style-type: none"> • Businesses • Clubs • Organizations • Scholarships • Trusts 	<p>One or a combination of the following criteria:</p> <ul style="list-style-type: none"> • Demonstrated financial need (FAFSA) • Ethnicity • Major field of study • Academic achievement • Other criteria 	<p>Scholarships</p> <p>Grants</p> <p>Loans</p> <p>Tuition Waivers</p>	<p>Search online databases for opportunities.</p> <p>Different programs may require:</p> <ul style="list-style-type: none"> -Applications -Personal statements -Essays -Letters of recommendation -Community Service <p>COMPLETE BY DEADLINES!</p>

REQUESTING LETTERS OF RECOMMENDATION CHECKLIST

Items to provide your recommender/reference with:

	Personal Statement
	Letter requesting letter of recommendation
	Resume
	Instructions for submitting letter (i.e. mailing address on stamped envelope, or email address)

SCHOLARSHIP APPLICATIONS CHECKLIST

Name of Scholarship	DEADLINE Details	Name of Recommender/Letter of Reference	Date Recommendation Requested	Follow up date	Transcripts

Timeline for Applying for Scholarships

This timeline is to give you your best shot at scholarships. Some scholarship deadlines are year-round, but most have Spring deadlines for Fall enrollment. Check out your options no matter what time of year it is! Note: UH Online STAR Scholarship Engine opens November 1st with application deadline of February 15th.

Fall

- Search for scholarships that you might be eligible for. Use the internet, ask instructors, students, financial aid officers, other single parents.
- Begin to draft your personal statement and/or essay.
- Fix or finish resume. Update every year.

Holiday Break

- Begin an organizing system for your taxes, financial aid and scholarship information. Put a folder on the desktop of your computer. Have a binder and a space at home reserved for documents. Write in all deadlines on your calendar and use the checklist at the back of this packet.
- Complete your search for scholarships. The more you find, the better your chances!
- Work on completing your personal statement.
- If an essay is required, get it done.
- Begin to gather tax information.
- Consider people for your letters of recommendation.

January

- Begin completing applications. Check deadlines on your scholarships.
- Ask those who know you well (including employers, professors, clergy or counselors) for letters of recommendation – it's also helpful to give them a copy of your personal statement/resume (ask if they want it first)
- Do your FAFSA and select “will file” if you are planning to file taxes, but haven't done so yet. After you file, go back on to the website select “make changes/update your SAR”
- Work on taxes or make appointment to have them done in early February.

February

- Complete taxes.
- Complete FAFSA (if you haven't already done so).
- Make sure letters of recommendation are picked up/mailed.
- Check deadlines and mail off applications due in March.
- Send copies of transcripts if necessary. UH needs at least 2 wks processing time.
- Mail Student Aid Report (SAR from FAFSA) if necessary.

March

- Mail off any scholarship materials due in the spring.

Most organizations announce scholarship recipients during the summer.

**** Its best to get started early, however it is not too late to begin applying in late January/early February.** Use your holiday time wisely while you have it!

Completing the FAFSA

(Free Application for Federal Student Aid)

Find it at: www.fafsa.ed.gov

To complete the FAFSA you will need:

- A copy of your 1040, 1040A, or 1040EZ
- State or local income tax return
- Forms and other records of money earned or received
- Records of untaxed income, such as Veterans, Social Security, AFDC, or Welfare benefits
- Current bank statements
- Current Mortgage information
- Business or Farm records
- Records of stocks, bonds and other investments
- Promissory notes or loan disclosure statements
- Names of the institution you are attending or applying to
- UH Manoa Title IV code # 001610 (it may change, so double check)

Hints:

- Get all documents together. **START EARLY.** Try to file by January, early February or as soon as possible. All Financial Aid applications are processed, “1st in, 1st Out.” But you must have a complete application. Priority deadline for UHM Financial Aid office is March 1. If you miss March 1, file as soon as you can.
- Read the instructions carefully. When in doubt, contact the financial aid office.
**Remember that it is okay to ask questions.
- File online. You will need to get a PIN number before you can file. Results will come much faster than if you mail in the paper FAFSA.
- Enter a “0” for questions that do not apply to you, unless the instructions tell you to leave it blank.
- Keep a copy of what you submit (you can copy and paste it into a Word document or print a copy of your FAFSA at the end of the process). It will be easier next time!
- **FILE EARLY.** Use estimated income if you have not completed your taxes or have an issue that is holding up your taxes.
- **FILE** by College deadline: UHM March 1st to award for the upcoming academic year. Some funds are limited and are awarded on a 1st filed; 1st served basis.

Further questions: WALK in and ask to have an appointment for difficult questions.

Early mornings are best

- Contact the Financial Aid Office at the University of Hawaii at Manoa
Student Services Building QLCSS 112
Phone Hours: Mon-Fri 9:00am to 3:00pm
Office Hours: Mon-Fri 8:30am to 3:30pm
Phone: 956-7251 Fax: 956-3985

Applying for Private Scholarships

Considerations:

- Will it affect my TANF/WIC/SNAP benefits? **NO**
 - (Most scholarships do not affect welfare benefits because “educational grants” are not counted as income)
- Find out if the scholarship is a one-time award or annually renewable.
- DEADLINES are absolute and have to be met.
- Scholarships can minimize the need for loans.

Tips:

- Start EARLY. There are several steps and it pays to get organized and not rush!
- Search for scholarships early and make a list of documents you will need
- Use the “Scholarship Application Checklist” (see last page) to help you keep track of documents and deadlines. STAY ORGANIZED!
- ALWAYS keep copies of EVERYTHING you submit. You never know when you will be asked to submit a duplicate and it will help you the next time you apply for that scholarship.
- Be sure you include information regarding any scholarship specific requirements (community service, additional essays, etc.)

Key Words:

- Parent, non-traditional, generation (as in first generation), returning, financial need, your ethnic background, your college or major (STAR is good),
- Read eligibility descriptions to get ideas for descriptors

Local websites:

- UHM Admissions (<http://www.uhm.hawaii.edu/admissions/>)
- UHM Financial Aid (<http://www.hawaii.edu/fas/>)
- Your/Other UH Campus Financial Aid offices (<http://hawaii.edu/admissions/aid.html>)
- UH Foundation website (www.uhf.hawaii.edu/studentscholarships.aspx)
- Hawaii Community Foundation website (www.hawaiicommunityfoundation.org)
- Kamehameha Schools Scholarships (www.ksbe.edu/finaid/)
 - A comprehensive list of other scholarships, not limited to Native Hawaiians, Click on Scholarships, 'Imi Na'auao, scroll to bottom “Other Post Hi Resources”
 - Post-high school scholarships include Na Ho'okama a Pauahi
- Ke Ali'i Pauahi Foundation (www.pauahi.org/scholarships)
- College Connections (www.collegeconnections.org)
- UHM Scholarship Site on STAR (www.star.hawaii.edu/scholarship)
(website opens on Nov 1st and closes Feb 15th)

National websites:

www.fastweb.com www.scholarsite.com www.petersons.com
www.careerandcolleges.com www.collegeanswer.com/index.jsp

Scholarships Affect Financial Aid: Some Considerations

If You Receive TANF Assistance:

If you receive welfare benefits (food stamps and/or cash assistance) - educational grants are not defined as “income.” (and “loans” are loans, not income). You should declare any awards but clearly indicate it is an educational award and should be exempt.

Scholarships Reduce Expected Family Contribution:

Your federal or campus-based financial aid will be affected by a private scholarship. Private scholarships are considered part of expected family contribution (EFC), or the amount you are expected to contribute toward your college costs. If you have a low EFC, your scholarship might reduce other forms of financial aid (loans, workstudy, etc). Financial Aid offices determine aid based on the cost of attendance minus your EFC.

Financial Aid cannot exceed the “cost of attendance:” Even if you are very successful with scholarships, your total FinAid package cannot be more than the UHM standard “cost of attendance.” Financial Aid uses a standard formula to determine the “cost of attendance” (tuition, books, room & board or housing) and your personal expenses may be more or less.

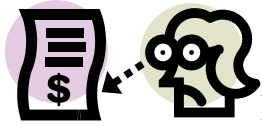
If your “cost of attendance”/budget does not include all your costs of attending (e.g. childcare) you can petition for an increase. (See “How to Petition for Additional Financial Aid.”)

Scholarships Paid to UH or Educational Institution: You Get the Difference!

Some scholarships are payable only to the educational institution (UH). If you receive a scholarship check from an outside donor (e.g., Hawaii Community Foundation) and the scholarship is made payable to the University of Hawaii at Manoa only, your scholarship will be applied towards your tuition and fees and any refund will be mailed to your refund address. This can take time. Make certain your address is correct in “myuh.” You may also sign up for an eRefund in myuh so that you can receive your refund electronically to your bank account, which is faster than waiting for it to be mailed to you.

But watch out if you have loans. If you receive scholarships and want to decrease your loans, be sure to go in to Financial Aid and CANCEL the loan before it is “electronically” disbursed through that bank account!

If your scholarship check is a co-payable check made out to you and the University of Hawaii at Manoa (e.g., Kamehameha Schools) you may either endorse the scholarship at the UH Cashier's office (across from UH Financial Aid Office) and apply it towards your tuition and fees payment or if your tuition and fees have already been paid, the UH Cashier's office will release the scholarship to you (mail you a refund check).



How to Petition for an Increase in Cost of Attendance

You applied for Financial Aid and received your award letter. But it's not enough!

You can petition financial aid to increase your budget (cost of attendance):

- **Childcare Expenses** (preschool and after school A+ during elementary years)
 - Include copies of child care receipts or tuition agreement for 9 months. Since financial aid will only count the Fall and Spring semesters in creating your package
 - Approximate maximums in 2009: 0-4 years \$698/month not to exceed \$6,282 total for 9 months. 5-12 years \$300/month not to exceed \$2,700 total for 9 months (limits may be higher depending on the year you submit this and your need)
- **Laptop or Desktop Computer** (1 time per degree sought: BA, MA, Ph.D)
 - Include copies of computer receipt or go to dell.com to create and print out the order summary with cost of computer highlighted
 - Maximum amount awarded in 2009: \$1,285
- **Medical Insurance:**
 - If you receive student insurance through HMSA, print out your statement or go to their website (hmsa.com/portal/student) click on Rates, print, and highlight the plan you are using.
- **Medical Costs Not Paid for by Insurance:**
 - Whatever your co-pay or share may be. Include copies of receipts and add up the totals.
- **Program Required Lab Supplies:**
 - (dental hygiene, visual arts, etc...) You may be able to include this if supplies are required by your program. Be specific in your amounts.

****NOTE**** Books, supplies and transportation are NOT items that you can increase.

****LOOK HERE!**** Write this letter in the Spring semester for the upcoming school year. For example, you write this letter in April to increase the COA for the upcoming school year beginning in August. But, you might not know how much you WILL pay for child care/insurance for the upcoming school year. Use estimates and note in the letter that you will update the letter when current rates are available!! Why write this letter so early? Financial Aid is busy year round. They need time to look things over.

Be sure to get your letter time stamped when you turn it in.

SAMPLE LETTER OF PETITION

[please only include what you will use. Words in () are for you to fill in to individualize it. Words in [] are for your notes, and **not** to be included in the letter.]

(fill in date)

University of Hawai'i Manoa Financial Aid Services
2600 Campus Road, QLCSS 112
Honolulu, Hawai'i 96822

PETITION FOR INCREASE OF COST OF ATTENDANCE (year)
FOR (name) ID# _____

Dear Financial Aid Advisor:

Hello. This is a letter requesting an increase in my Cost of Attendance for the (current year) school year to reflect the following changes as a full time (undergraduate/graduate) student and (single) parent.

I am a full time (year of study) student in the (fill in college program). I am also a full time (single) mother/father to a (quickly describe you child or children). As a parent, I find it hard to support my family while attending school. I apply for scholarships and grants to assist me in my (dream/pursuit/goal) of becoming a (whatever) in order to secure a strong future for me and my (child/family). (One sentence describing the type of student you are). I find that my financial resources for the (current school year) school year might surpass my expected Cost of Attendance (COA). I am petitioning for an increase in my COA to reflect the realities of a parent's cost to attend college at the University of Hawai'i at Manoa.

Listed below are the costs of various items that I know financial aid will include in the cost of attendance.

- **Graduate School Tuition:** [*used only if taking more than 8 graduate credits*] Please increase my (list current tuition) tuition based upon 8 credits to reflect current (fill in credits) credit enrollment for graduate tuition.
- **Laptop Computer Cost:** (fill in amount). This is my first computer purchased during my (whatever degree). [*include receipt or copy of statement from dell.com of computer*]
- **Medical Expense:** (fill in current rate). [*if next years rates are not available, use last years figures, and note that you will use next year's rates when it becomes available.*]
- **Childcare Expenses:** (fill in total amount for 9 months). Costs for child to attend (be specific in name of school, for what year, and include full or part time care) [*if you do not know the current costs for next school year, use last years figures and note for changes made*]

Adding the above figures, my new COA would be (add correctly to current COA)

Please increase my (current school year) COA from its current (fill in amount) to (new amount listed above) to reflect my current costs of attending (undergrad/grad) school at UH Manoa.

Thank you very much for your time and consideration in this matter. If there is anything else that I can do to increase my COA, please let me know. I will keep financial aid informed of any scholarships added throughout the year. If you have any questions regarding my request, please feel free to contact me at: (telephone) or (email).

(Sincerely, With fondest regards, With many thanks....)

(full name)
(ID number)
(address)

ATTACHMENTS: [list all the attachments, copied on clean, white 8 ½ x 11 paper, stapled]
copies of the purchase prices for computer
copies of medical plans/insurance receipts
duplicate check receipts for services paid for child care expenses

[list any other copies that are required-
be sure to clearly label ALL papers with your name and ID #]

Tips for your Personal Statement or Essay

These ideas are from “How to go to College Almost for Free” by Ben Kaplan

- 1) Show, Don't tell: Instead of merely telling how good you are, show them with stories and anecdotes. “Life is busy as a single parent. My days start at 5:30 getting the kids up and ends at 11:00 when my homework is done.”
- 2) Personal Details: Relate the essay question to personal experience and unique perspectives. “Managing my time wisely is so important because it helps me to deal with all the roles I play: mom, employee and student.”
- 3) Organization: Write the essay with a clear idea of what you want to say.
An example of an outline for an essay:
Paragraph #1: Introduction
Paragraph #2: Personal goals
Paragraph #3: Reasons for pursuing my goals
Paragraph #4: How I plan to reach my goals
- 4) Clear, to the point: Each sentence in the essay should serve an important purpose. Write a draft of the essay to get your ideas down, then go back and eliminate extra words or phrases while keeping the main ideas.
- 5) Writer's Block: Don't let that blank page scare you! To get in the flow, write nonstop for 20 minutes, look at other people's essays, talk to a friend, tape-record yourself speaking, try writing in a different place.
- 6) Draft #2: Rewriting is important. Look at your ideas again and how you communicated them. Take a day off and look at your essay with fresh eyes. Ask friends, family and teachers for feedback.
- 7) Short answers: If it says 150 words, keep your essay within that amount. Focus on your most important points.
 - For free help on writing resumes and cover letters: Career and Development Center at UH Manoa QLCSS 212. Phone 956-7007.

Words of advice from a student parent:

- Grammar counts! Double check everything.
- Add poetical elements, uses metaphors, similes, and alliteration to make yours unique. Sprinkle throughout the essay to create a fun story.
- Recycle: Yes, you can use last year's essay for a different scholarship. Unless your goals and situations have changed, why not? Change a few examples and tailor it to **fit with every scholarship**.
- End with a bang: include the REAL reasons behind applying for scholarships: your child! Whenever I was stuck, I hugged my child and was reminded by my little reason for competing in higher education.

SAMPLE Personal Statement (and yes, I shortened it!)

Aloha mai kākou. As a first generation college student, I am eternally grateful for the support of family in pursuit of a Master's Degree in Curriculum Studies. During the beginning of each year, what I like to call "scholarship season," I feel an enormous amount of stress and anxiety. This is the time to renew, replenish, and reassure myself that I will be able to fund next school year's college expenses. And this Personal Statement was harder than usual to write this year.

As I sat by my computer staring at the screen that said, "*Aloha mai kākou*" for the past twenty minutes, I found myself constantly irritated. My daughter was playing in the room for a total of five minutes before she came out to ask me to try her "carrot stew" and "strawberry smoothie." So I stopped staring aimlessly to "taste" her concoctions on the tray table, marveled at the effort she put into arranging the pink and purple princess dishes, and shooed her away so I could focus on more important tasks. When she interrupted me once more, I went through the rituals of tasting, commenting, kissing, and shooing so I could focus on writing my essay. But she came back again seven minutes later.

This time, I was quite full of plastic provisions. I twisted my body to her and snapped sharply, "I have had enough food now. I am not playing with you right now, I am WORKING! Mommy needs to do this and you need to STAY away and play by **yourself!**" My eyes were glaring. I looked at her little wide eyes slowly swelling up with tears and a mouth that drooped downwards to utter loudly, "You're always at your computer. I just wanted to play with you. You said you would play with me after. I **just** wanted to play with **you!**" There was crash as the plastic offering fell from her hands and a snuffle of cries as I watched my little girl turn from me and stomp to the room that we shared.

I closed my mouth, wiped away my hot tears. Did I deserve to be yelled at like that? Then the light bulb flickered on. I have fallen victim to what many parents also succumbed; quality time with my child. I slumped down in my chair to stare at the picture slide show on my monitor. Then I smiled as I jotted down some notes on a pink post-it and ran to hug my daughter.

What is the point of this story? I have found the reason for writing this essay; it is my five year old daughter _____. The most important being in my life....

My teaching philosophy has always been to "fill the need where need is needed most." Right now, the need is to have knowledgeable, effective, caring, and highly qualified teachers in Hawaii's preschools who add to the diversity reflected in our classrooms. I am continually applying my skills in my classroom as a Hawaiian culture teacher by demonstrating a love for others, *hula*, and Hawaiian language. I display my fondness and excitement for learning every day as I interact with children whether it occurs at the preschool or elementary level. I continue to learn different languages to meet the needs of my diverse preschoolers as they enter into an "English speaking" classroom. I continue to research creating a Hawaiian curriculum to fulfill a need to have authentic activities that foster a love for learning in young children.

There is a definite need in education. I hope to fill some part of it through teaching, learning, writing curriculum, and engaging young minds to love learning. It is through this facet that I will make a difference in my community starting with its young children. Let us cherish the children, *pūlama nā keiki*, for they are our future.

Mahalo nui for your time and consideration on my application.

(use whatever works for you to paint a picture of your life,
and why you deserve this scholarship)

Recommendation Letters

Some scholarship funds require that applicants submit letters of recommendation. You may wish to ask teachers, counselors, ministers or employers as they can usually comment on overall character, achievement and promise. These letters must have been written within the last year, contain your full name and must be signed by the writer.

- Identify 3 or 4 people who know you well and are willing to write letters of recommendation for you.
- Sort these people according to your strengths. You might ask one to focus on your community service ethics; one for academics; one for attitude and work ethic, usually an employer.
- Ask EARLY! Allow the writer 1—2 weeks to compose the letter. Be prepared to share your personal statement.
- Make a list of all the scholarships that require letters. Make sure you give the people who will be writing your letters the eligibility criteria for all of the scholarships you are applying for. They may wish to write one letter that can be used for all scholarships. Write thank you notes to your references for their letters.

Information to give those who are writing letters for you:

1. The name of the person to whom the letter should be addressed.
2. The deadline for the letter.
3. A copy of any forms to be filled out
4. What should be done with the letter...Return to you? Mail to organization? Don't forget to provide an addressed, stamped envelope!
5. A rough draft of the personal statement or essay that you are writing for the scholarship committee to give them a better idea of who you are and what your goals involve.
6. Any other information the writer needs to know.

WHY DO I NEED COMMUNITY SERVICE?

... because scholarships, jobs, people in general like to see that you the applicant are a worthwhile person who deserves their help and support.

- A scholarship is basically an organization's investment in you. Not only does helping others feel good, but it presents you as a more well-rounded person.
- How can I do this? I'm so busy being a parent and everything...
 - If your child is in a care center/preschool, they might offer opportunities for parents to help out in the classroom
 - The classroom teacher might have you volunteer your skills with the children
 - Are you a good storyteller? Artist? Gardener? Singer?
 - Like to chaperone field trips?
 - Like to draw or take home little things to cut up for the teacher?
 - Like to get involved in parent-teacher organizations and plan activities?
- As long it's unpaid and from the heart, you can include it in your essay or resume!
- Some scholarships require service hours anyway. So keep track of those hours and write how those event and activities impacted you, taught you something new, etc...

These Are Worth Your While

- Think about it: if you spend 3-5 hours working on a scholarship packet, and you are awarded \$1,000; that's equal to earning over \$250 an hour!! Well worth it?? I think so.

PROGRAM

STAR – UH Student Scholarships

https://www.star.hawaii.edu:10012/Scholarship_live/login.jsp

*Online resource for students where you can search for scholarships.

STAR can find scholarships specific to your major, but also use key words that apply to you when searching. Read carefully to determine if you meet eligibility guidelines and please don't just copy and paste the SAME answers for all your essay questions! Change at least a few lines.

Applications typically open in November; Applications are typically due in February
(check website for application deadlines)

Osher Reentry Scholarship

<http://www.manoa.hawaii.edu/osherscholarship>

This scholarship assists students who are returning to complete a BA/BS after a minimum 5 year gap in their education. The 5-year gap may also occur prior to any college enrollment.

Osher Reentry Scholars does not target student parents, but many parents meet the criteria

Osher Reentry Scholarships are part of the STAR Online Scholarship Database & Application
Applications typically open in November; Applications are typically due in February
(check website for application deadlines)

Scholarships: University of Hawaii at Manoa Financial Aid Services Office

<http://www.hawaii.edu/fas/scholarship.html>

*Financial Aid Services Office is located at UH Manoa in QLSSC 1st fl, Room 112

Hawaii Community Foundation

<http://www.hawaiicommunityfoundation.org/>

- It is recommended you apply for HCF scholarships using their online system.
- You will still need to mail supporting materials by the deadline-check the website for date
 - Each scholarship fund has specific eligibility criteria defined by the donor.
To obtain a paper application, call: 808-566-5570
Scholarships typically open in December and are due in February.
(check website for application deadlines)

UH Foundation

***UH Foundation Scholarships have been incorporated into the STAR online Scholarship page
Additional info regarding scholarship criteria etc available at:***

<http://www.uhf.hawaii.edu/scholarships/studentscholarships.aspx>

UH System Scholarships

To search the list of scholarships, or for more info on how to apply, go to:
https://uhsys.scholarships.ngwebsolutions.com/CMXAdmin/Cmx_Content.aspx?cpId=624
Applications typically due in March, check website for deadlines and application details

OTHER SCHOLARSHIPS AVAILABLE

PROGRAM	AGENCY/ADDRESS	ELIGIBILITY	AWARD AMOUNT
American Association of University Women (AAUW) National Website's Scholarship Search	http://www.aauw.org/what-we-do/educational-funding-and-awards/ * Download application on the website	varies Six different Fellowships and Grants *Check deadline dates on the website	Varies \$2,000 - \$30,000
AAUW Honolulu Branch	http://honolulu-hi.aauw.net/welcome/scholarships/ Check website for deadline (usually Feb) – Apply through Hawaii Community Foundation (HCF) (keyword: AAUW)	Both graduate and undergraduate scholarships available.	Assists with educational expenses, research & conference attendance.
AAUW Windward Branch	http://windward-hi.aauw.net/scholarships/information/ Check website for deadline (applications typically need to be postmarked by March 1)	Educational grants available for Undergraduates.	Assists with educational expenses.
Adult Students in Scholastics Transition (ASIST) Scholarship	http://www.ewihonolulu.org/scholarships/asist.html Download application from website. Applications typically need to be postmarked by March 31.	Financial need, socially, physically, and economically challenged adults. Displaced household with small children.	Corporate ASIST Awards: varies up to \$10,000
Aloha Care Believes in Me!	For more information, call Rachel Mark at (808) 973-1313. Apply through UH STAR scholarships. Applications typically open in Nov; Applications are typically due in February	Members of Aloha Care (Quest Health Plan) & other low-income students. Mail copy of Aloha Care card w/ application	Up to \$2500

<p>American Business Women's Assoc. – Na Kilohana O Wahine Chpt Special Scholarship</p>	<p>http://www.abwahawaii.org/scholarships.html</p> <p>Check Website for deadlines.</p> <p>To request a scholarship applicant login, Email: info@abwahawaii.org</p>	<p>Both graduate and undergraduate students. Hawaii High School graduate prior to 2003. At least a 2.5 GPA.</p>	<p>\$2000</p>
<p>American Business Women's Assoc. – Onipa'a Chapter</p>	<p>http://abwaonipaa.weebly.com/scholarships.html</p> <p>Check website for deadlines.</p> <p>To apply: use the "Contact Us" form on the website to request more information.</p>	<p>US citizen; Hawaii resident; Completed 2 semesters as a full-time undergraduate must maintain 3.0 cumulative GPA</p>	<p>\$1000</p>
<p>ASUH Awards - Tuition Scholarship, Research Award, & Graduate Test Prep Award</p>	<p>UH Mānoa ASUH For more info: Campus Center #211 asuh@hawaii.edu 956-4822 http://asuh.hawaii.edu/studentfunding</p>	<p>Undergraduate, full-time enrolled, all credits at UHM Three categories: Academic Achievement; Unique Circumstances; High Financial Need</p>	<p>Partial tuition or Research Awards up to \$1000; & Graduate Test Prep Award up to \$750</p>
<p>Business and Professional Women's Foundation</p>	<p>Hawaii FB page: https://www.facebook.com/HawaiiBPW</p>	<p>Females, 25 years old by 5/2009; critical financial need; demonstrate career plans; applications come out either February or March</p>	<p>\$1,000 – 2,500 Receives 1000+ applications for 100-200 awards annually</p>
<p>Emerge (Empowering Women through Education)</p>	<p>Check website for more information and eligibility criteria: http://www.emergescholarships.org/scholarships/apply.php Application must be postmarked typically by April 1</p>	<p>For women returning to school after a hiatus, changing careers, seeking advancement in their career, & stay-at-home moms entering the work place and in need of education/training. Must be at least 25 yrs old.</p>	<p>\$2000 - \$5000</p>
<p>Gates Millennium Scholars Programs</p>	<p>Website: www.gmsp.org</p> <ul style="list-style-type: none"> • Hispanic Scholarship Fund • Organization of Chinese Americans 	<p>Undergraduates enrolling for the first time. Must be Pell Grant eligible. Be a member of an underrepresented ethnic group (see website).</p>	<p>Varies; check out website</p>

	<ul style="list-style-type: none"> • The American Indian Graduate Center • United Negro College Fund 		
King Kalakaua Scholarships (UHM School of Pacific & Asian Studies)	Contact fellowships coordinator at chizuko@hawaii.edu (956-2210) for more information.	Fulltime undergraduate at UHM; 3.5 GPA or higher at UHM or UHCC (if a new transfer); Major related to Pacific-Asia region.	Partial tuition
Kua`ana Merit Tuition Waiver	UH Manoa Kua`ana Student Services, QLCSS #406 Phone#: 956-2644 Fax#: 956--9880 E-mail address: kuaana@hawaii.edu	Native Hawaiian Merit and Need based Enrolled full time at UH Manoa	Covers full or partial tuition
Linda Lael Miller – Scholarships for Women	Visit website for application and eligibility information: http://www.lindaelmiller.com/lindas-scholarship/ Submit a 500 word essay Application typically due in August	Must be a woman 25 yrs or older. Demonstrate financial need.	Offers 10 \$1000 scholarships
National League of American Pen Women (NLAPW) -Art Scholarships	http://www.nlapw.org/competitions/#awards Scroll down to: “NLAPW Awards and Scholarships” section Two scholarships: 1) Shirley Holden Helberg Grants for mature women & Helen Trueheart Cox for Native Americans. Check website for contact info and application deadlines	Women 35 yrs or older.	\$1000

<p>Patsy T. Mink Education Foundation Scholarship</p>	<p>www.patsyminkfoundation.org</p> <p>Click on Award Applications to download an application.</p> <p>Application period open 5/1-7/15</p>	<p>Must be a woman, at least 17 years of age and a mother; enrolled in accredited program; must be low-income.</p>	<p>\$2,000 awarded to five women each year.</p>
<p>P.E.O. Program for Continuing Education</p>	<p>http://www.peointernational.org/peo-projectsphilanthropies</p>	<p>Needs based grant for women whose education has been interrupted. Need to have 24 consecutive months as a nonstudent. Doctoral students not eligible.</p>	<p>\$3000</p>
<p>Society of Women Engineers (SWE)</p>	<p>http://societyofwomenengineers.swe.org</p> <p>Sophomores through Graduate Students Application typically: December -February</p> <p>Freshmen Application typically: March - May</p> <p>Check website for deadlines</p>	<p>Women both undergraduate and graduate, Full-time students, Min 3.5 GPA</p>	<p>\$1000-\$10,000</p>
<p>Soroptimist Women's Opportunity Scholarship</p>	<p>Check SPAM scholarship page for info and to download application & reference forms (scroll to the bottom of page): http://manoa.hawaii.edu/studentparents/resources/scholarships.htm</p>	<p>Be a woman supporting family, have financial need, vocational or undergrad student. Need application, personal statement, 2 references forms (download reference form).</p>	<p>\$5,000</p>
<p>Talbot's Women's Scholarship Fund</p>	<p>https://www.scholarshipamerica.org/talbotswomen/instructions.php</p>	<p>Scholarship awards are based primarily on financial need and previous achievement for women who earned their high school diploma or GED at least 10 years ago. Must be seeking first bachelor's degree.</p>	<p>Thirty awards for \$5000; one award for \$30,000.</p>

Women's Independence Scholarship Program	The Sunshine Lady Foundation 4900 Randall Parkway, Suite H Wilmington, NC 28403 Toll-Free # (866) 255-7742 www.wispinc.org	Funds for survivors of partner abuse who are in school to achieve the financial stability necessary for independence and self-sufficiency.	\$ 2,000
SEARCH ENGINES	AGENCY/ADDRESS	ELIGIBILITY	AWARD AMOUNT
American Education Services Scholarship	American Education Services Scholarship www.aessuccess.org	Search engine for scholarships, tailored to student.	
Free Scholarship search	www.studentscholarshipsearch.com	Off-the-beaten path scholarship opportunities	
Jeannette Rankin Foundation Women's Scholarship Fund	Visit website for list of scholarships: http://www.rankinfoundation.org/students/resources/other-scholarships-for-women	Varies	Varies