

Materials and Lab Procedure:

Examine the tools and materials in the inventor's box at each station. Identify the variables for the station and control variables in your inquiry investigation. Devise an experimental procedure to safely collect data to answer your question and validate the hypothesis. Create an appropriate table to record your data.

Data Collection:

Record data from your station precisely in the table that your team has created and also in the appropriate space below.

Lab Station 1: The Cruncher

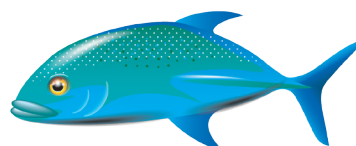
1. Explain in words, or in a drawing, the tools you used, and how you used them:

2. Record your observations (What happened? Was it difficult? Why or why not?):

3. Conclusion based on data collected:

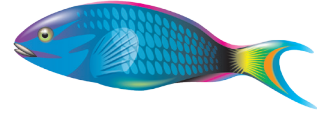
4. Name of reef fish using this method of feeding to "crunch" food: _____

5. Describe the fish's *mouth features* and the *type of food* it eats:



Lab Station 2: The Picker

1. Explain in words, or in a drawing, the tools you used, and how you used them:



2. Record your observations (What happened? Was it difficult? Why or why not?):

3. Conclusion based on data:

4. Name of reef fish who “picks” to obtain food: _____

5. Describe the fish’s *mouth features* and the *type of food* it eats:



Station 3: The Point-of-Viewers

1. Explain in words, or in a drawing, the tools you used, and how you used them:

2. Record your observations (What happened? Was it difficult? Why or why not?):

3. Conclusion based on data:

4. Name of reef fish with mouth feature that points at its food in a specific direction:

5. Describe the fish's *mouth features* and the *type of food* it eats:



Station 4: The Sucker

1. Explain in words, or in a drawing the tools you used, and how you used them:

2. Record your observations (What happened? Was it difficult? Why or why not?):

3. Conclusion based on data:

4. Name of reef fish who “sucks” its food: _____

5. Describe the fish’s *mouth features* and the *type of food* it eats: