

Graduate Assembly Spring 2025

04.24.2025



OVERVIEW

Welcome

Announcements, Reminders, &
Considerations

Grad Town Hall

Comments/Questions?



Announcements

► Graduate Division

- **NEW:** Upload of all materials required prior to submission of Liaison admissions application
 - For Summer/Fall 2026
 - Applicants will be required to upload all materials before submitting
 - Notification of evaluation by Graduate Student Services to be sent via email
 - Programs will be able to start their review sooner
 - Reduces time spent chasing documents (based on feedback and experiences in the last year and half)
 - To revise program page on application RE: message, requirements, etc.
 - Submit Kualī form



Announcements

► Graduate Division

- **UPDATE:** Projected use of Outcomes: **August 1, 2025**
 - For Summer/Fall 2026
 - All reviews of applications to be done in Outcomes
 - Training will start July 1 and will be on-going
 - If interested in a heads start, email Darry Tse, GD IT, darry@Hawaii.edu
 - Kualī form to be available to request access to Outcomes
 - Access is required for all faculty and staff who participate in the admissions process
 - ISAT training (annually required) is required prior to approval
 - Feedback is welcomed as we continue working on Outcomes



Announcements

► Graduate Division

- **NEW:** Degree audit system: projected start Spring 2026
 - Program sheets (degree and GCERT) scribed by Ellucian to Banner Spring/Summer 2025
- **SHARE:** NGSO (New Graduate Student Orientation) 2025
 - Resource fair: Monday, August 18; Sessions start in early August (similar to last year)
- **SHARE:** Surveys - gathering information; please participate
 - AI - Artificial Intelligence
 - Microcredentials
 - GTA workload - encourage GTAs to participate



Announcement RE: Banner

- ▶ FYI - Change to Banner 9 - October 3, 2025
 - Support and security measures to stop for Banner 8
 - Allows for more functionality for all - students, faculty/staff
 - Features to become available will enhance the student experience
- ▶ What this means for you:
 - Access to Kuali forms, Liaison remain the same
 - Anticipated change for ReportServer in future, reports will still be available
 - Potentially more functionality down the road



Start: Advanced Degree ILOs & Data Collection

- ▶ Identify specific SLOs and PLOs that align with one ILO
- ▶ Not all SLOs and PLOs must align w/ all ILOs
 - 1:1 alignment PLO to ILO
 - 1:1 alignment SLO to ILO
- ▶ Start collecting data once alignment is complete
- ▶ Collaborate with your assessment coordinator and program faculty on ways to assess/evaluate the ILOs and collect data
- ▶ Review data as part of annual review of program as well as for program review self-study



Reminders: General

- ▶ Download Graduate Application Materials from the Online Supplemental Document System for Fall 2024 admissions.
- ▶ Award your Achievement Scholarships for AY 25-26
- ▶ Fall 2025 NRTE Waitlist - contact GD iAssoc Dean
- ▶ Report Graduate Faculty membership changes to GD
- ▶ Remind all GF members to complete Title IX training (notification via email)
- ▶ Regular GF & CGF members maintaining GF standards?
- ▶ **Annual Doctoral Student Review Report: Due 05.20.25**
 - Submit to Interim Dean Maeda (julienne@hawaii.edu)



Reminders & Considerations

- ▶ Enrollment is required even while Form 2 is pending
 - 1 cr of 699 is minimal, unless full-time (6 cr for GA; otherwise 8 cr) is required
- ▶ Review curriculum & PLOs
 - Relevance to students and the workforce?
- ▶ Program Modifications & Course Actions
 - For any changes
 - **OVPAE Deadline: October 15 & March 15**
 - Share clear program requirements for degrees/GCERTs



- ▶ Combined Bachelor's And Master's Pathways
 - [BAM Website & Guidelines](#)
 - Email: manoabam@hawaii.edu



Communication and Promotion of your Program's Outcomes

- ▶ Business is no longer usual
 - Timely response is becoming increasingly important
 - Accessible online via Zoom as well as in person/phone
- ▶ Ensure program website is fully functional
 - Up-to-date, accurate, informative, ADA compliant, and appealing
 - Curricular changes to website only after approval by OVPAE
- ▶ Marketable and Return on Investment?
 - [Beyond Graduate School/Beyond the Professoriate](#)
- ▶ Are your faculty and staff on board?



Graduate Program Mentoring Culture

► GD Mentoring Resources

- Graduate Faculty Mentoring Guide
- Graduate Faculty Do's and Don'ts

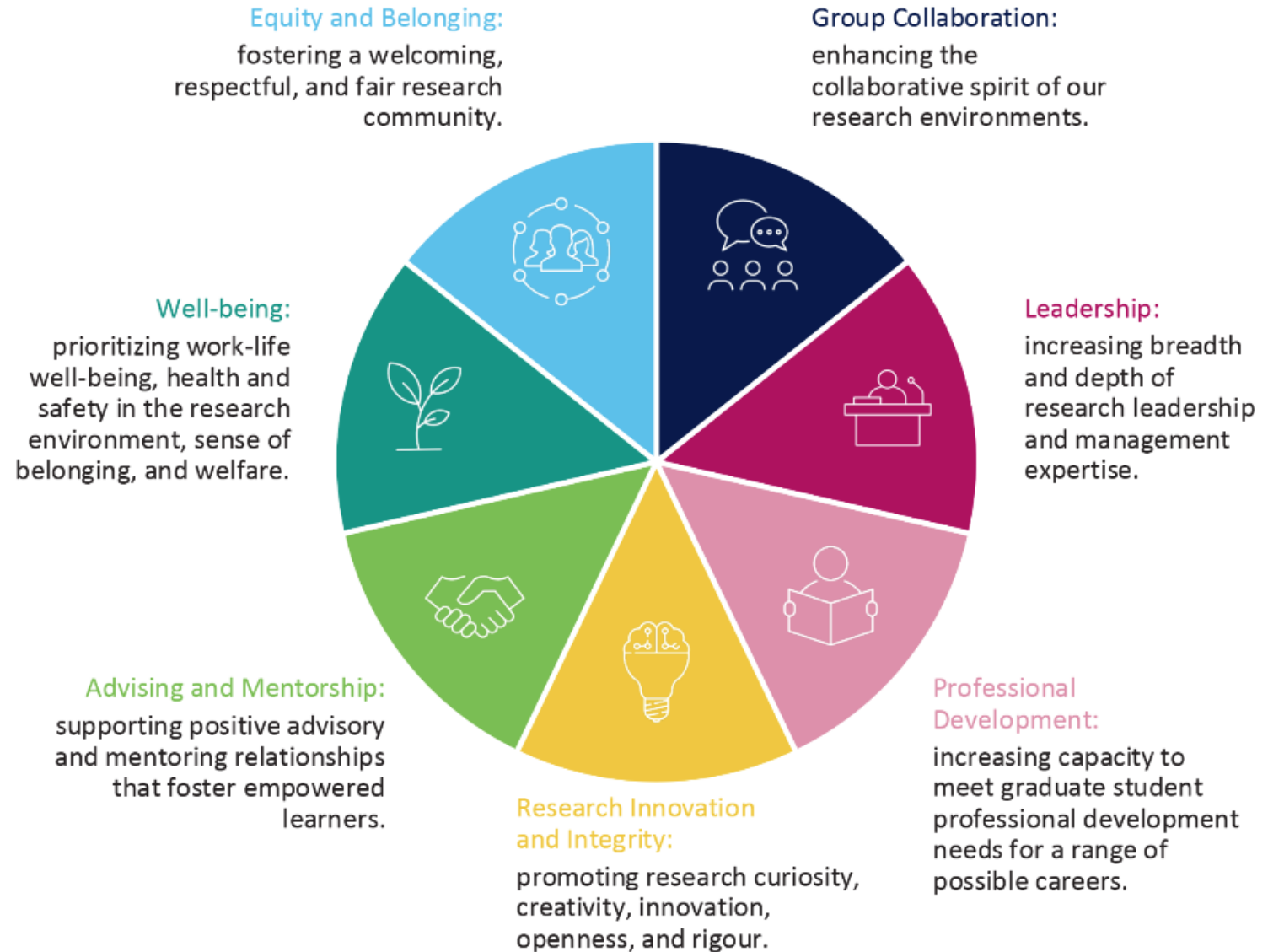
► Other Resources

- [Nat'l Ctr for Faculty Development & Diversity \(NCFDD\)](#)
 - Professional development & resources for faculty
- Healthy Research Teams and Labs Report and Best Practices
 - Sponsored by Council of Graduate Schools (2025)
 - Applicable concept for all, not just science-based programs
 - Shared the Report and Best Practices via memo April 15, 2025



Healthy Research Teams & Labs (CGS, 2025)

Aspects of a healthy environment



Healthy Research/Professional Environment

► Added comments:

- Clear and open communication
- Building the relationship and connection
- Clear expectations by both parties
- Distinguish between Graduate Research Assistant (GRA) responsibilities and related academic journey related research
- Student experience should be better than our own



Graduate Program News

- ▶ **New name:** Nonprofit Management GCERT (PUBA)
- ▶ **New BAM:** Philippine Language & Culture BA + Asian Studies MA
- ▶ **Return:** Nursing PhD Program
- ▶ **New:** Applied Computing GCERT - Fall 2025



*Mahalo for your support of
graduate education!*

Concluding thoughts, comments, questions?

