

10

APPENDIX

- Attachment B: Implementation Plan and Articulation Within the UH System 10–2

- Enrollment Data..... 10–3
 - Focus classes..... 10-3
 - Foundations courses..... 10-7
 - Diversification courses.....10-12
 - Hawaiian/Second Language courses.....10-14

- Web Sites.....salmon sheet

- Acronyms..... blue sheet

"Attachment B: Implementation Plan and Articulation Within the UH System"

NOTE: "Attachment B" was submitted to the BOR in 2000 as part of the materials justifying and explaining the change in UHM's general education requirements. Community college faculty have interpreted this as definitive articulation procedures.

This articulation plan has since been modified (see chapter 7, System Articulation).

For Information Only

It is anticipated that transfer and articulation issues relating to the diversification requirement (i.e. courses designated as social sciences, natural sciences or humanities) will be handled through existing articulation procedures (E5.209) although these will have to be adapted to handle the liberalization of the requirement.

The articulation for the remaining components will be handled in a manner similar to that which currently operates for writing intensive courses. The experience gained in developing that program will be drawn upon in setting up similar University-wide Committees to coordinate and support campus boards. There is no obligation on other campuses in the system to develop mechanisms for designating courses as satisfying any particular Mānoa general education requirement, but should they wish to do so they would need to set up their own board to review courses.

At Mānoa there will, in addition, be a General Education Committee to coordinate the work of the boards and to assume responsibility for the program as a whole. This committee will also be responsible for assessment of effectiveness of the program.

In the case of the Foundations Board at Mānoa it is intended that, particularly in the first few years, the board will actively promote the taskforce goal of linking courses where possible, promoting discussion of the particular needs of freshmen students that Foundations courses should try to address, and soliciting ideas for new course combinations so that students have options beyond those currently offered (History 151/152, Math 100/Phil 110, English 100).

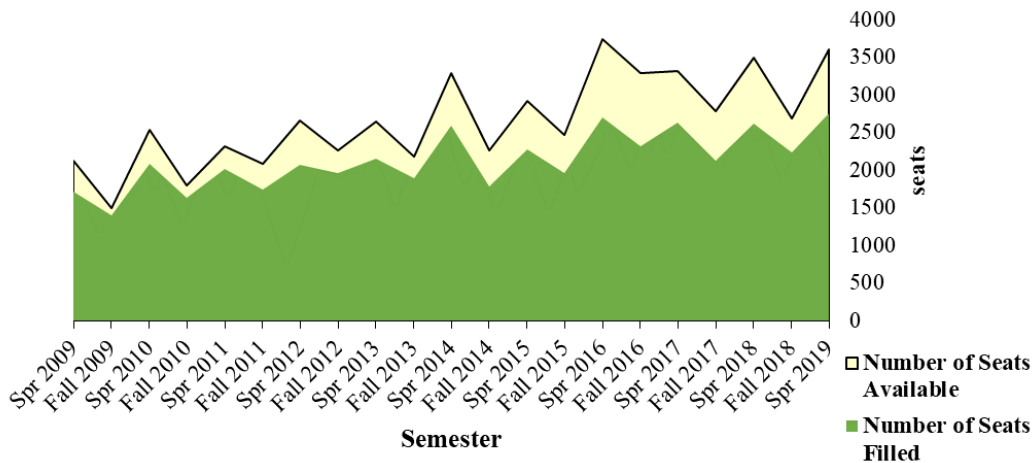
Enrollment Data

FOCUS

Contemporary Ethical Issues

Semester	Number of Classes Offered*	Number of Seats Available	Number of Seats Filled	Percent Filled	Average Enrollment	Median Enrollment
Spr 2019	145	3,603	2,756	76%	20	15
Fall 2018	106	2,686	2,232	83%	22	18
Spr 2018	131	3,499	2,613	75%	20	17
Fall 2017	95	2,783	2,130	77%	23	17
Spr 2017	133	3,314	2,626	79%	20	16
Fall 2016	103	3,290	2,321	71%	23	19
Spr 2016	129	3,740	2,694	72%	21	18
Fall 2015	69	2,462	1,966	80%	28	21
Spr 2015	105	2,923	2,278	78%	22	20
Fall 2014	71	2,268	1,778	78%	25	20
Spr 2014	141	3,296	2,587	78%	18	18
Fall 2013	83	2,175	1,887	87%	23	20
Spr 2013	105	2,646	2,158	82%	21	19
Fall 2012	77	2,262	1,966	87%	26	20
Spr 2012	100	2,657	2,069	78%	19	17
Fall 2011	73	2,086	1,741	83%	22	20
Spr 2011	95	2,322	2,022	87%	21	20
Fall 2010	68	1,797	1,635	91%	23	20
Spr 2010	91	2,541	2,089	82%	23	20
Fall 2009	64	1,497	1,399	93%	22	20
Spr 2009	65	2,126	1,719	81%	21	20

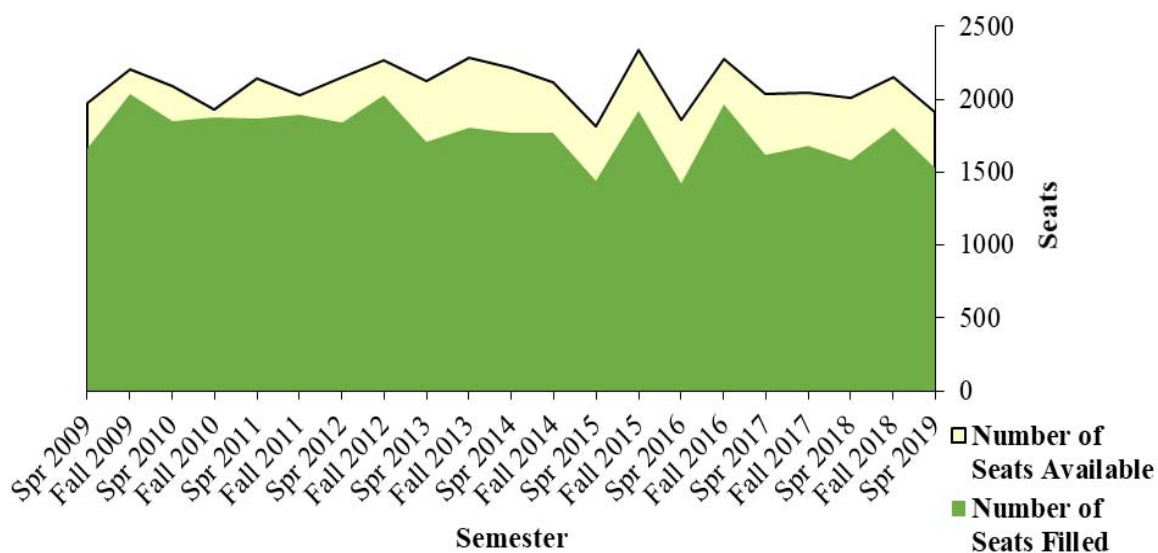
CEI Enrollment Data Spring 2009 - Spring 2019



Hawaiian, Asian, & Pacific Issues

Semester	Number of Classes Offered*	Number of Seats Available	Number of Seats Filled	Percent Filled	Average Enrollment	Median Enrollment
Spr 2019	58	1,909	1,526	80%	27	24
Fall 2018	69	2,155	1,807	84%	27	21
Spr 2018	65	2,009	1,580	79%	25	20
Fall 2017	65	2,047	1,684	82%	26	20
Spr 2017	64	2,035	1,620	80%	25	21
Fall 2016	69	2,277	1,966	86%	28	27
Spr 2016	63	1,862	1,423	76%	23	20
Fall 2015	71	2,342	1,917	82%	27	22
Spr 2015	55	1,810	1,442	80%	28	24
Fall 2014	60	2,119	1,768	83%	29	28
Spr 2014	69	2,210	1,774	80%	32	24
Fall 2013	64	2,285	1,807	79%	36	28.5
Spr 2013	58	2,124	1,704	80%	37	25
Fall 2012	64	2,266	2,025	89%	35	26.5
Spr 2012	55	2,149	1,837	85%	32	29
Fall 2011	50	2,030	1,898	93%	38	35
Spr 2011	54	2,146	1,867	87%	35	28.5
Fall 2010	52	1,930	1,875	97%	36	34
Spr 2010	52	2,086	1,854	89%	36	31
Fall 2009	55	2,205	2,035	92%	37	34
Spr 2009	55	1,971	1,660	84%	30	28

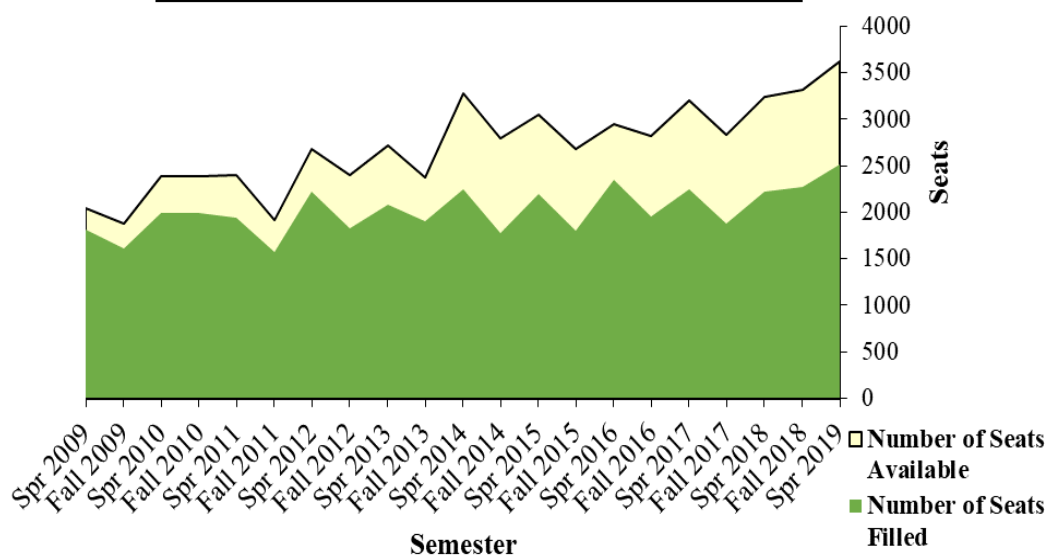
HAP Enrollment Data Spring 2009 - Spring 2019



Oral Communication

Semester	Number of Classes Offered*	Number of Seats Available	Number of Seats Filled	Percent Filled	Average Enrollment	Median Enrollment	Enrollment Range
Spr 2019	193	3,616	2,516	70%	14	14	0-43
Fall 2018	179	3,319	2,273	68%	13	14	0-30
Spr 2018	166	3,234	2,216	69%	14	13	0-36
Fall 2017	157	2,838	1,882	66%	12	12	0-30
Spr 2017	168	3,202	2,241	70%	13	14	0-46
Fall 2016	159	2,826	1,955	69%	12	13	0-32
Spr 2016	155	2,950	2,351	80%	15	15	0-44
Fall 2015	144	2,677	1,798	67%	12	13	0-33
Spr 2015	161	3,047	2,190	72%	14	15	0-40
Fall 2014	141	2,796	1,774	63%	12	13	0-33
Spr 2014	162	3,276	2,250	69%	14	12	1-30
Fall 2013	130	2,370	1,899	80%	15	15	1-30
Spr 2013	149	2,720	2,079	76%	14	14	0-30
Fall 2012	126	2,399	1,821	76%	14	16	0-36
Spr 2012	142	2,679	2,227	83%	14	15	0-30
Fall 2011	115	1,917	1,574	82%	14	15	0-32
Spr 2011	127	2,397	1,936	81%	15	16	0-31
Fall 2010	124	2,384	1,995	84%	16	17	1-33
Spr 2010	124	2,384	1,995	84%	16	17	1-32
Fall 2009	98	1,878	1,609	86%	16	18	2-34
Spr 2009	110	2,045	1,811	89%	16	19	1-33

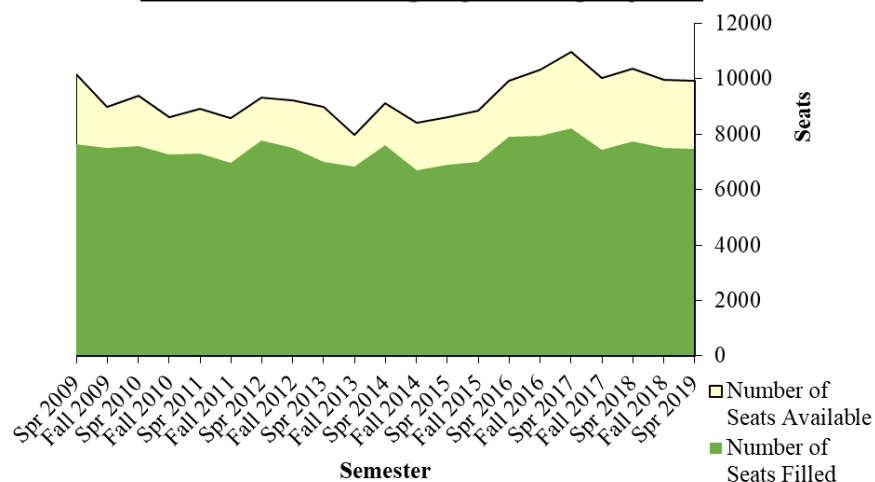
OC Enrollment Data Spring 2009 - Spring 2019



Writing Intensive

Semester	Number of Classes Offered*	Number of Seats Available	Number of Seats Filled	Percent Filled	Average Enrollment	Median Enrollment
Spr 2019	563	9,933	7,456	75%	14	15
Fall 2018	556	9,949	7,495	75%	14	15
Spr 2018	581	10,382	7,732	74%	14	15
Fall 2017	575	10,024	7,442	74%	13	14
Spr 2017	619	10,978	8,202	75%	13	14
Fall 2016	592	10,347	7,948	77%	13	14
Spr 2016	541	9,935	7,912	80%	15	16
Fall 2015	505	8,857	7,017	79%	14	15
Spr 2015	463	8,602	6,899	80%	15	17
Fall 2014	464	8,414	6,703	80%	14	16
Spr 2014	527	9,131	7,603	83%	14	16
Fall 2013	447	7,975	6,834	86%	15	17
Spr 2013	501	8,999	6,999	78%	14	16
Fall 2012	499	9,226	7,514	81%	15	17
Spr 2012	519	9,310	7,776	84%	14	16
Fall 2011	484	8,573	6,963	81%	14	16
Spr 2011	507	8,936	7,312	82%	14	17
Fall 2010	453	8,601	7,258	84%	16	18
Spr 2010	510	9,398	7,569	81%	15	17
Fall 2009	495	9,000	7,503	83%	15	17
Spr 2009	541	10,170	7,644	75%	14	16

WI Enrollment Data Spring 2009 - Spring 2019



* The number of classes offered may differ from the number of classes approved because
 > approved classes that were cancelled or have zero enrollment are not included;
 > cross-listed classes have been combined, e.g., AMST 300/WS 300 = 1 class; or
 > a class whose meeting time & location all coincide with another class have been combined.

FOUNDATIONS

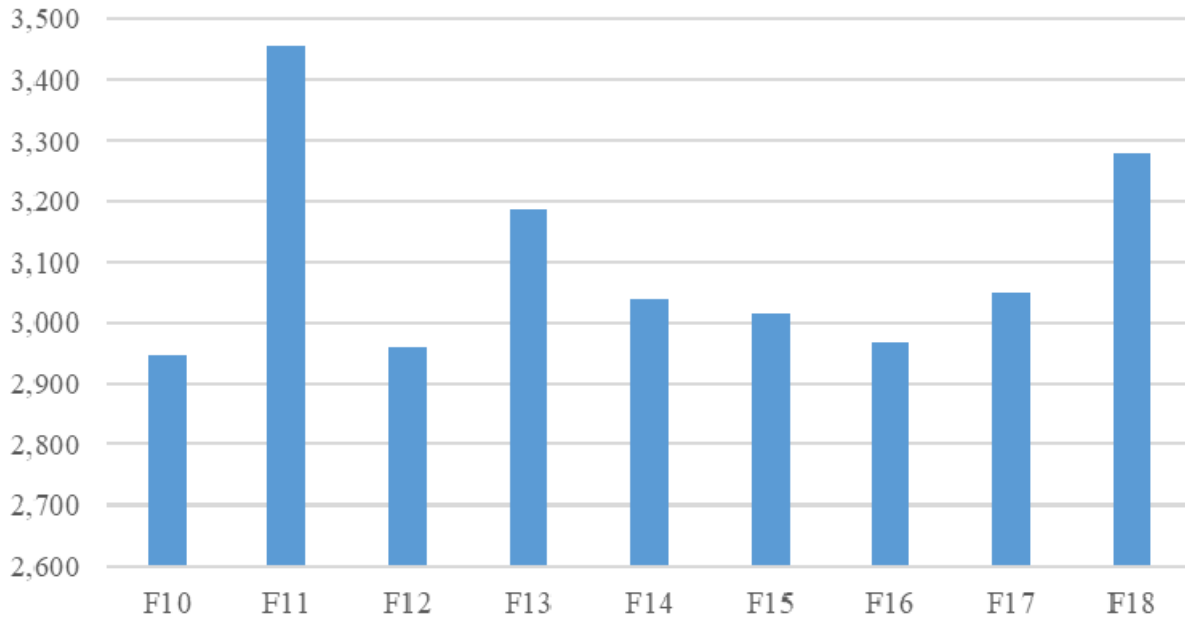
Global & Multicultural Perspectives (FG)

	AMST 150(A)	ANTH 151(A)	ANTH 152(A)	ART 175(A)	ART 176(A)	BOT 105/7(A)	FSHN 141	GEOG 102	GEOG 151	GG 135 (ERTH)	HAW 100	HIST 151	HIST 152	HIST 155	HIST 156	HIST 161A	HIST 162A
S19	87	116	102	28	120	x	x	108	132	48	326	151	82	*	x	7	x
F18	95	228	255	163	5	117	x	166	137	*	386	294	198	*	x	x	x
S18	76	126	137	11	110	x	x	79	101	47	323	127	115	*	x	x	12
F17	86	248	236	208	5	127	x	105	123	*	382	343	120	*	x	8	8
S17	61	106	111	17	101	x	x	87	124	*	244	211	120	*	x	x	x
F16	85	215	168	158	4	132	35	110	96	*	371	331	155	*	44	17	20
S16	39	124	100	11	110	20	36	127	56	*	234	187	123	*	48	x	20
F15	85	204	156	178	x	119	40	90	76	*	340	380	112	*	38	20	x
S15	49	91	119	16	137	x	94	77	91	*	258	165	151	*	x	8	10
F14	83	179	183	251	5	111	x	56	70	*	299	432	108	*	47	x	x
S14	33	185	93	x	164	x	x	64	74	*	279	237	134	*	x	x	15
F13	68	308	229	163	x	*	x	128	80	*	376	457	119	*	x	16	10
S13	x	144	135	x	174	*	x	79	94	*	x	174	181	*	*	x	x
F12	96	412	195	229	x	*	x	142	92	*	x	462	134	*	*	20	20
S12	47	327	208	x	233	14	36	87	83	*	*	132	225	16	*	x	14
F11	82	428	403	262	x	156	x	183	113	*	*	317	140	x	*	17	9
S11	x	172	274	x	277	x	*	96	58	*	*	175	250	x	*	x	16
F10	x	467	x	277	x	190	*	157	101	*	*	523	114	x	*	11	12

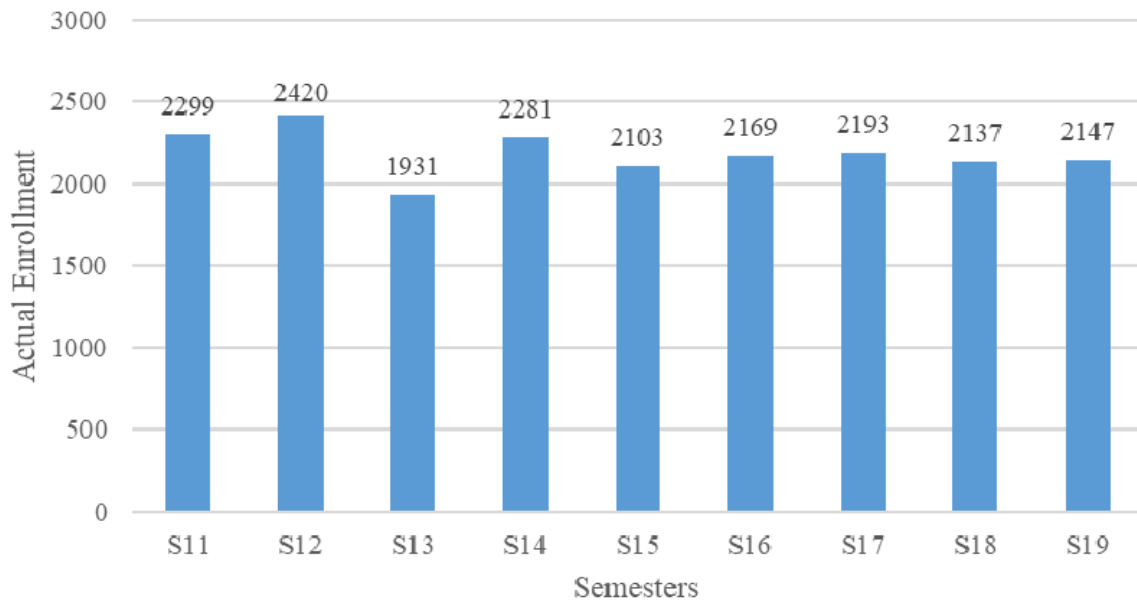
	LING 105	LLEA/ CLAS 151	LLL 150	MUS 107(A)	OCN 105/ SUST115	PHIL 130	PHIL 131	POLS 150	POLS 160/ SOCS 180	REL 149	REL 150	SLS 150	TIM 102	WS 175	WS 176	TOTAL
S19	75	41	*	30	110	x	35	21	22	7	305	23	74	97	x	2,147
F18	101	39	*	52	141	79	*	59	30	8	433	30	165	58	39	3,278
S18	111	25	*	37	122	*	*	x	28	10	349	*	97	94	x	2,137
F17	103	23	*	44	111	*	*	50	38	8	457	*	170	47	x	3,050
S17	149	45	*	85	124	*	*	x	22	*	388	*	76	48	74	2,193
F16	110	x	*	83	118	*	*	50	27	*	497	*	93	49	x	2,968
S16	110	88	x	32	47	*	*	25	x	*	439	*	131	62	x	2,169
F15	116	x	x	99	48	*	*	40	x	*	631	*	97	105	39	3,013
S15	118	x	x	96	*	*	*	*	37	*	446	*	90	50	x	2,103
F14	102	90	x	64	*	*	*	*	33	*	702	*	95	44	85	3,039
S14	126	*	x	76	*	*	*	*	*	*	659	*	82	50	x	2,281
F13	87	*	x	82	*	*	*	*	*	*	753	*	87	48	62	3,186
S13	61	*	x	64	*	*	*	*	*	*	665	*	96	53	x	1,931
F12	34	*	x	58	*	*	*	*	*	*	823	*	98	49	95	2,959
S12	*	*	x	38	*	*	*	*	*	*	751	*	102	46	97	2,420
F11	*	*	71	61	*	*	*	*	*	*	1,010	*	100	30	76	3,458
S11	*	*	x	52	*	*	*	*	*	*	779	*	*	29	121	2,299
F10	*	*	72	63	*	*	*	*	*	*	959	*	*	x	x	2,946

* Course was not approved as a Foundations course during this semester. x = course not offered during this semester

FG: Fall Enrollment Data, 2010-2018



FG: Spring Enrollment Data, 2011-2019

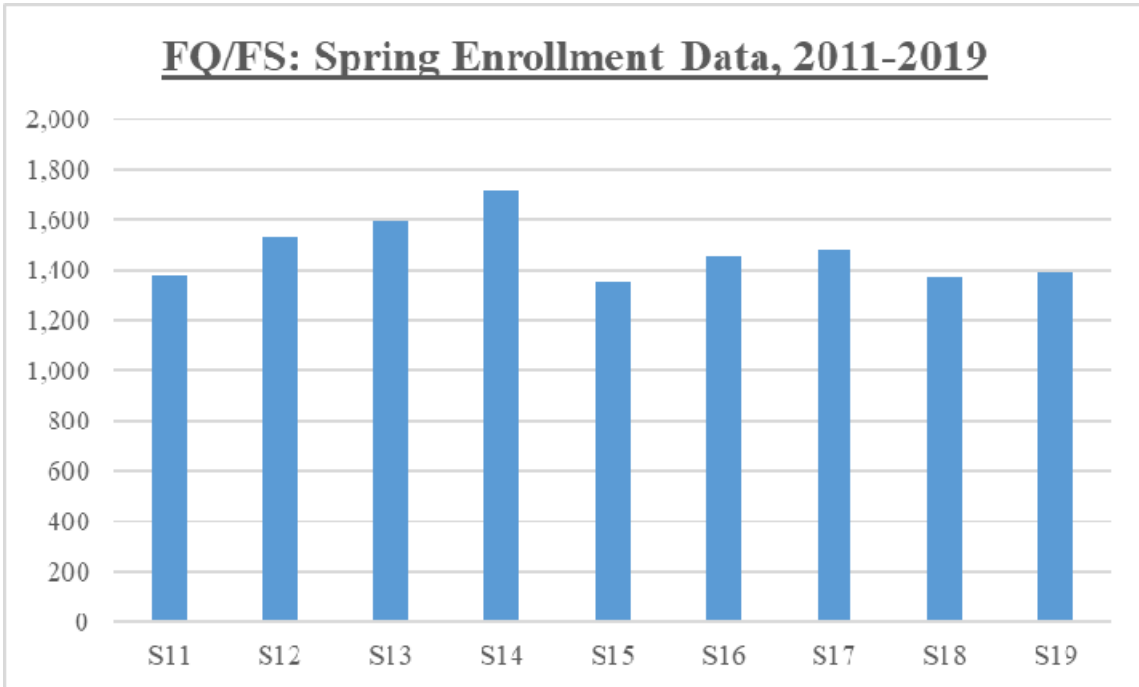
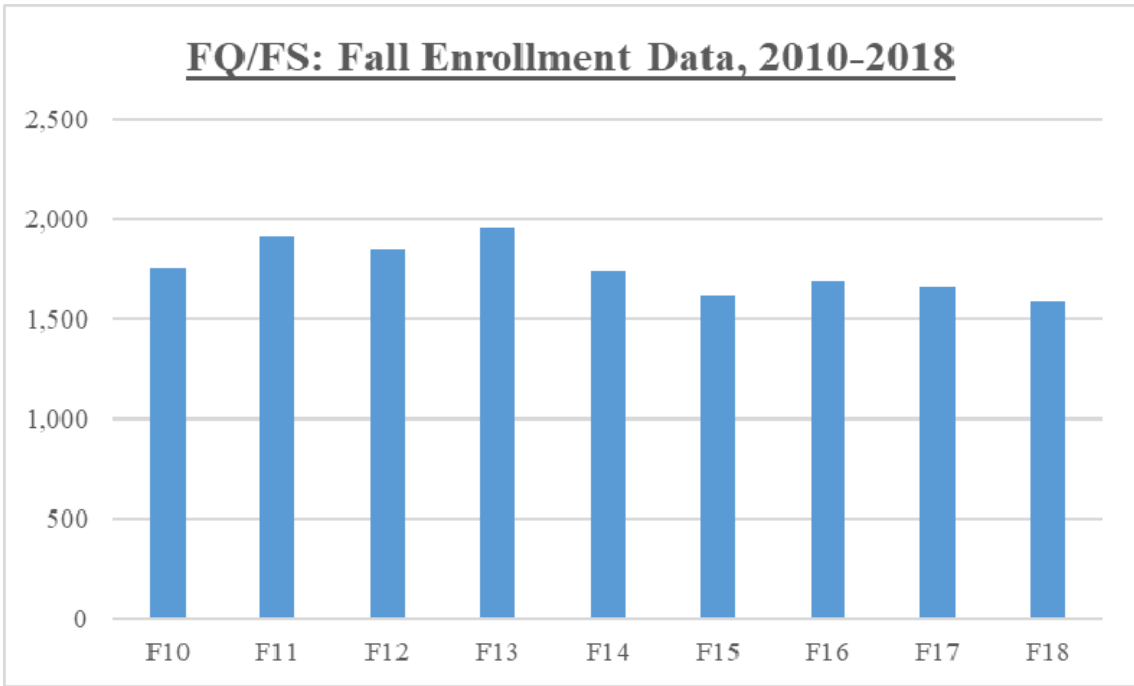


Quantitative/Symbolic Reasoning (FQ/FS)

	ATMO/GG/ OCN 150	ANTH 220	BUS 250	COMG 102	GG 102/ SUST 113	ECON 301	ICS 141	ICS 241	MATH 100	MATH 112	MATH 140
S19	x	47	77	22	28	*	61	*	202	49	192
F18	7	x	x	*	26	*	46	*	403	23	220
S18	*	*	70	*	*	*	47	54	252	53	201
F17	*	*	x	*	*	*	100	20	355	17	274
S17	*	*	x	*	*	*	81	47	299	50	232
F16	*	*	x	*	*	*	78	46	405	19	281
S16	*	*	x	*	*	*	62	60	277	49	225
F15	*	*	x	*	*	*	118	17	367	25	252
S15	*	*	x	*	*	*	65	79	211	65	191
F14	*	*	x	*	*	*	115	39	394	31	218
S14	*	*	x	*	*	*	83	62	264	67	224
F13	*	*	x	*	*	*	110	51	384	45	241
S13	*	*	x	*	*	*	91	52	280	64	224
F12	*	*	x	*	*	*	112	14	480	34	224
S12	*	*	x	*	*	*	46	46	344	43	208
F11	*	*	x	*	*	*	94	39	574	41	226
S11	*	*	x	*	*	*	68	39	409	48	164
F10	*	*	x	*	*	*	79	28	698	29	184

	MATH 161	MATH 203	MATH 215	MATH 241	MATH 251A	NREM 203	PH 210	PHIL 110	PHIL 111	SOCS 150	TOTAL
S19	59	63	79	259	*	160	35	*	63	*	1,396
F18	53	68	142	376	19	130	18	*	57	*	1,588
S18	51	69	83	214	x	176	*	34	67	*	1,371
F17	53	68	135	351	10	144	*	35	95	*	1,657
S17	57	83	70	232	x	206	*	44	76	*	1,477
F16	65	89	124	312	21	162	*	21	85	*	1,687
S16	50	90	71	235	x	215	*	38	80	*	1,452
F15	47	83	108	367	11	146	*	19	58	*	1,618
S15	59	100	88	222	x	213	*	41	20	*	1,354
F14	56	92	150	330	11	173	*	99	35	*	1,743
S14	56	135	129	255	x	204	*	99	17	122	1,717
F13	54	86	165	357	29	150	*	102	53	130	1,957
S13	48	84	96	199	x	156	*	113	61	125	1,593
F12	41	93	138	284	12	138	*	104	48	130	1,852
S12	42	91	72	172	x	168	*	43	90	169	1,534
F11	55	69	96	258	23	168	*	109	72	96	1,920
S11	*	64	81	180	x	150	*	105	65	*	1,373
F10	*	70	127	228	26	150	*	115	22	*	1,756

* Course was not approved as a Foundations course during this semester
 "x" = course not offered during this semester



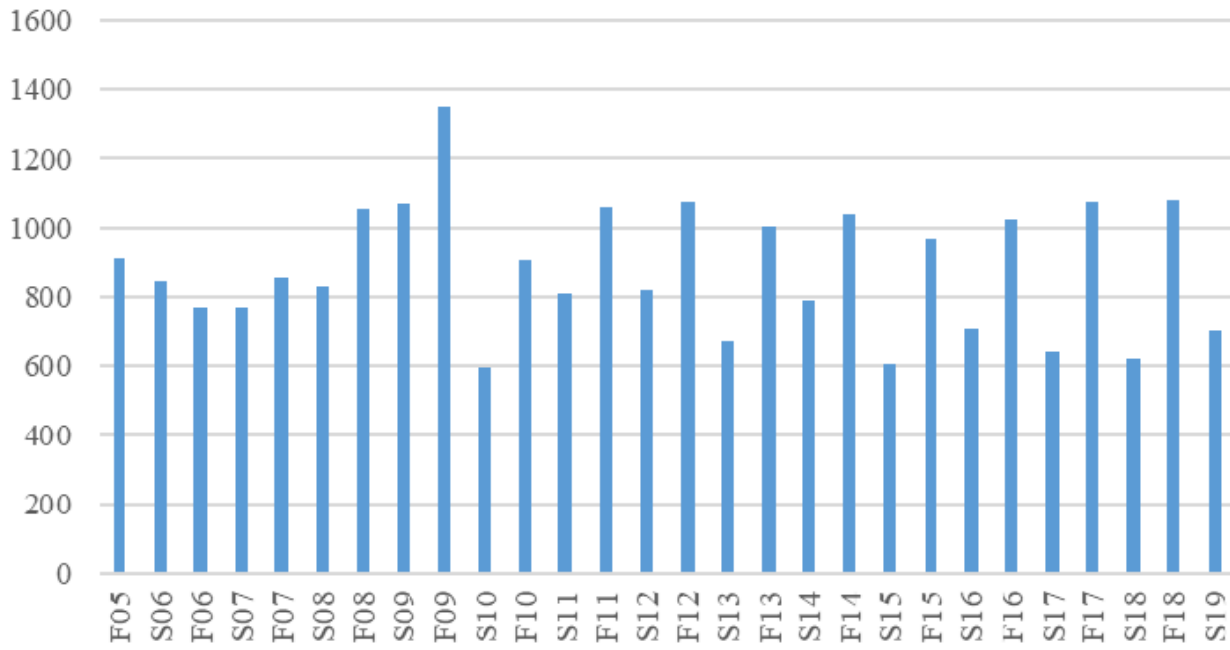
Written Communication (FW)

	AMST 111	ENG 100A	ENG 100	ENG 101	ENG 190	ELI/ESL 100	TOTAL
S19	x	5	638	x	33	28	704
F18	19	42	961	x	34	29	1,085
S18	x	17	543	x	39	19	618
F17	x	61	957	x	23	35	1,076
S17	x	37	555	x	31	19	642
F16	x	63	897	x	38	33	1,021
S16	*	42	599	x	38	32	711
F15	*	42	863	x	36	28	969
S15	*	17	538	x	21	30	606
F14	*	40	933	x	34	29	1,036
S14	*	18	714	x	27	29	788
F13	*	55	880	x	38	28	1,001
S13	*	20	594	x	33	28	675
F12	*	42	962	x	34	34	1,072
S12	*	10	748	x	39	22	819
F11	*	33	945	x	41	40	1,059
S11	*	21	730	x	31	27	809
F10	*	41	808	x	20	38	907
S10	*	19	502	x	46	28	595
F09	*	35	1210	x	60	46	1,351
S09	*	19	977	20	NA	54	1,070
F08	*	56	879	68	NA	51	1,054
S08	*	36	670	89	NA	33	828
F07	*	42	677	99	NA	39	857
S07	*	14	618	74	NA	60	766
F06	*	37	610	83	NA	39	769
S06	*	19	689	83	NA	54	845
F05	*	32	734	104	NA	42	912

* Course was not approved as a Foundations course during this semester

"x" = course not offered during this semester

FW: Enrollment Data, Fall 2005-Spring 2019

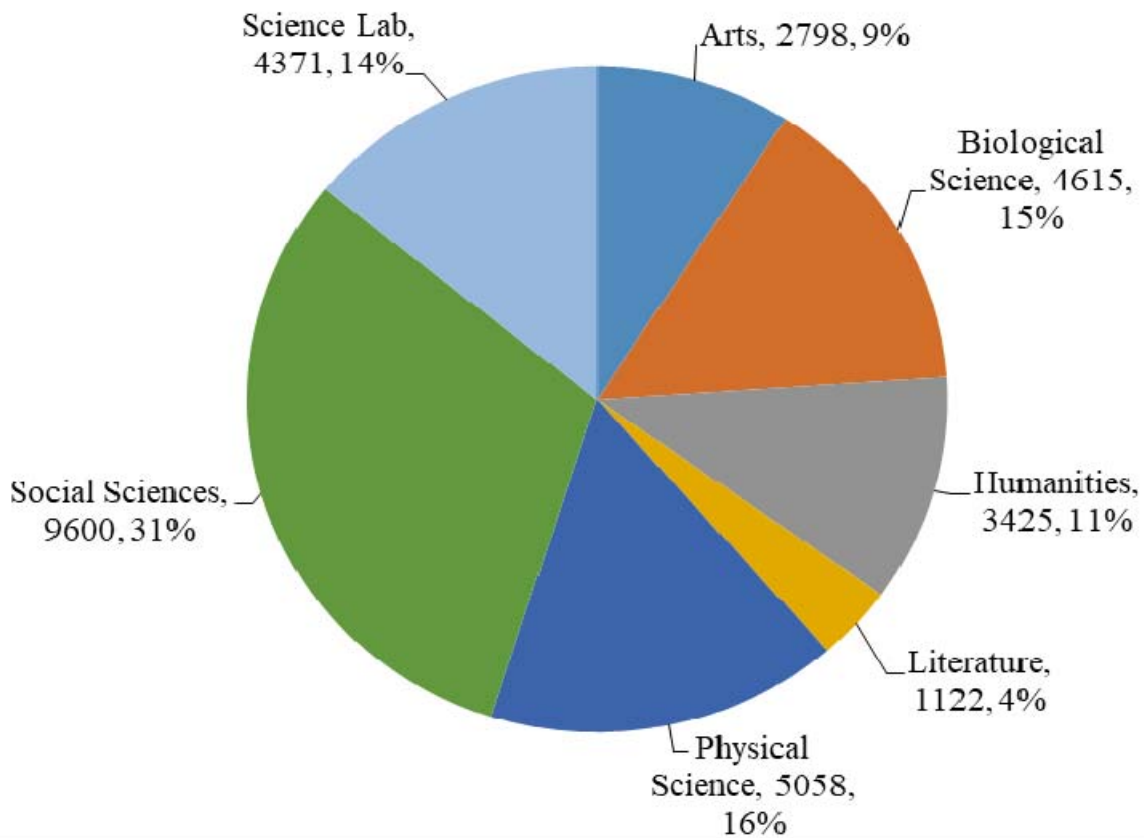


DIVERSIFICATION, Fall 2018

Number of students enrolled in Diversification courses by course level and area

Area	Course Level				Grand Total
	100	200	300	400	
Arts	750	749	636	663	2,798
Biological Science	1,909	609	1,220	877	4,615
Humanities	884	476	1,299	766	3,425
Literature	105	323	568	126	1,122
Physical Science	2,364	1,321	966	407	5,058
Science Lab	2,652	1,328	4,363	1,257	9,600
Social Science	2,880	902	394	195	4,371
Grand Total	11,544	5,708	9,446	4,291	30,989

Diversification Enrollment, Fall 2018

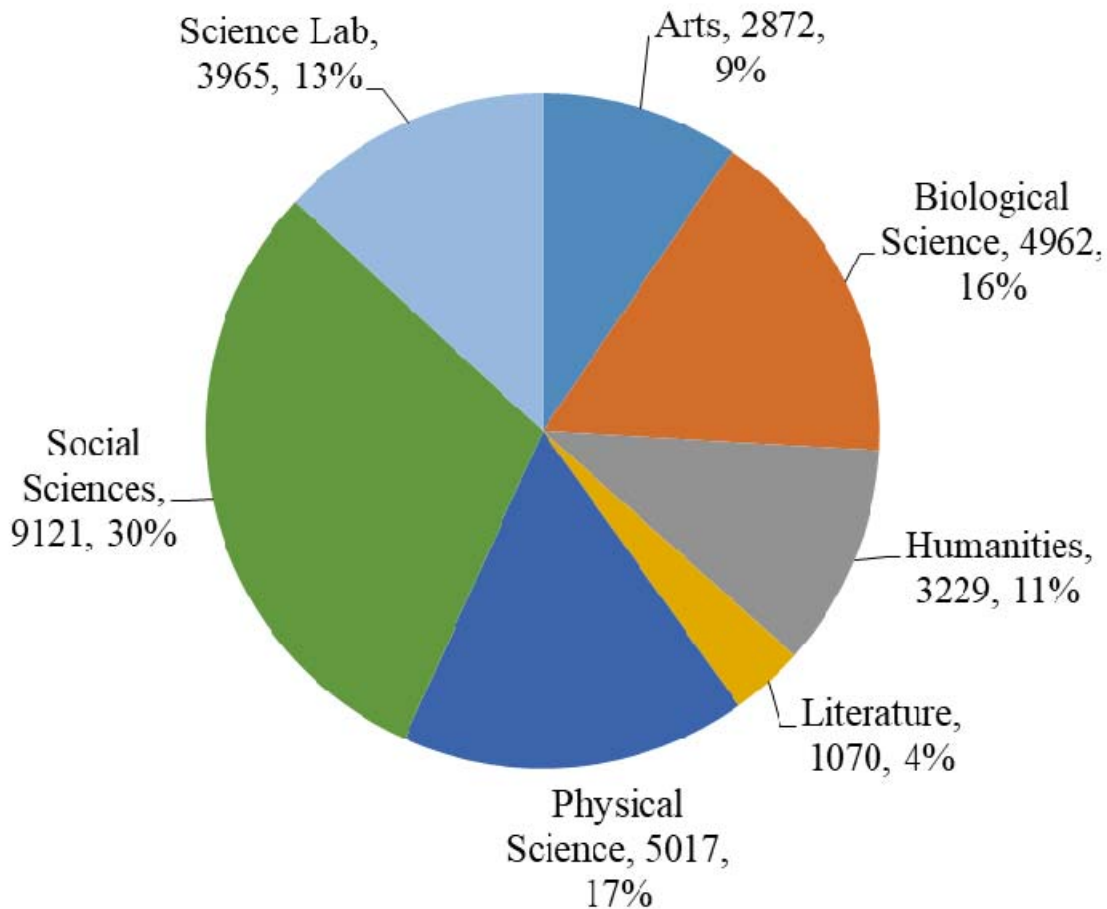


DIVERSIFICATION, Spring 2019

Number of students enrolled in Diversification courses by course level and area

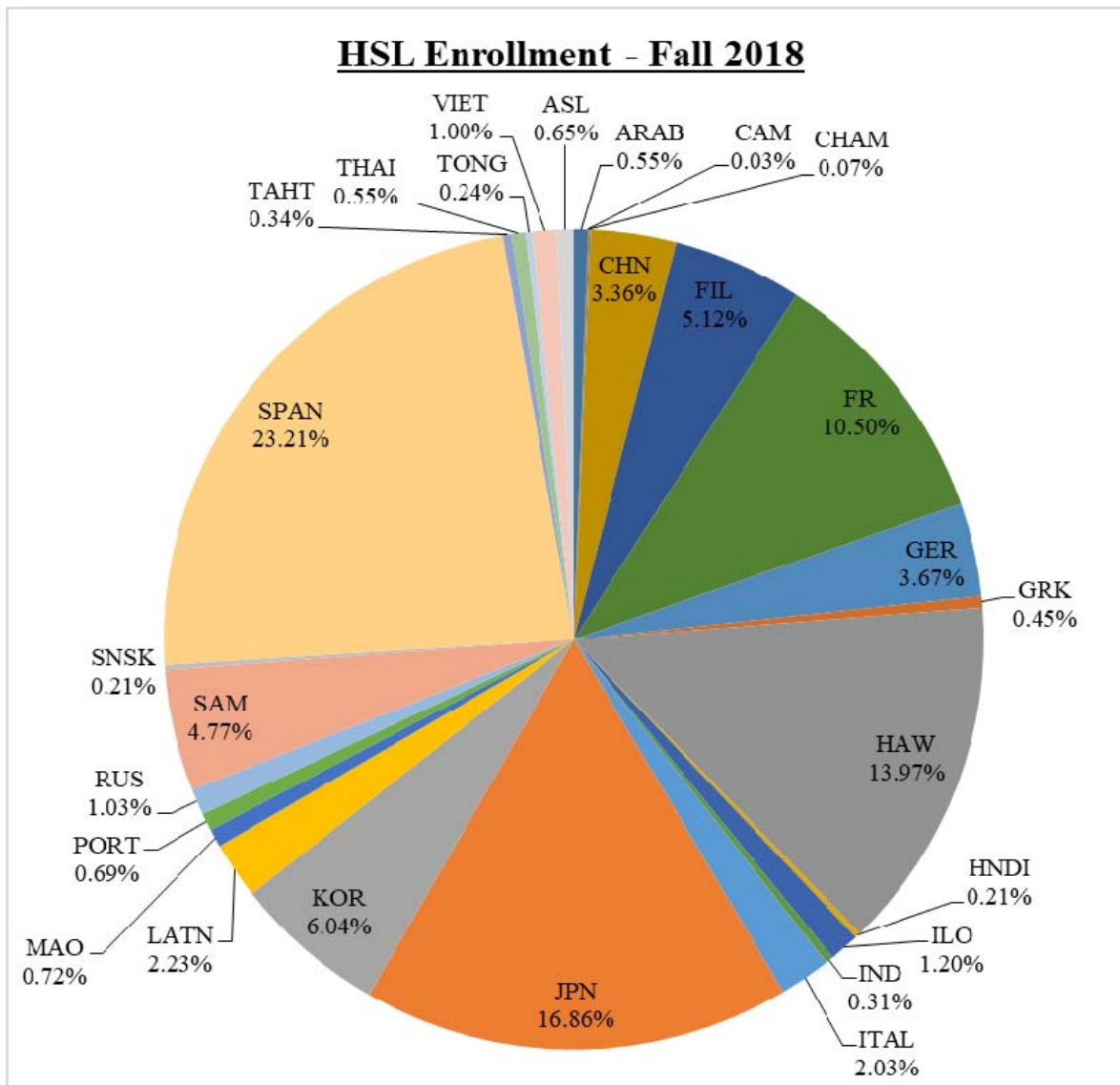
Area	Course Level				Grand Total
	100	200	300	400	
Arts	844	748	681	599	2,872
Biological Science	1,509	134	2,102	1,217	4,962
Humanities	776	400	1,318	735	3,229
Literature	59	329	529	153	1,070
Physical Science	2,303	1,123	1,068	523	5,017
Science Lab	2,160	1,358	4,536	1,067	9,121
Social Science	2,565	484	721	195	3,965
Grand Total	10,216	4,576	10,955	4,489	30,236

Diversification Enrollment, Spring 2019



HAWAIIAN or SECOND LANGUAGE, Fall 2018

Total number of students enrolled = 2913



HAWAIIAN or SECOND LANGUAGE, Spring 2019

Total number of students enrolled = 2,713

