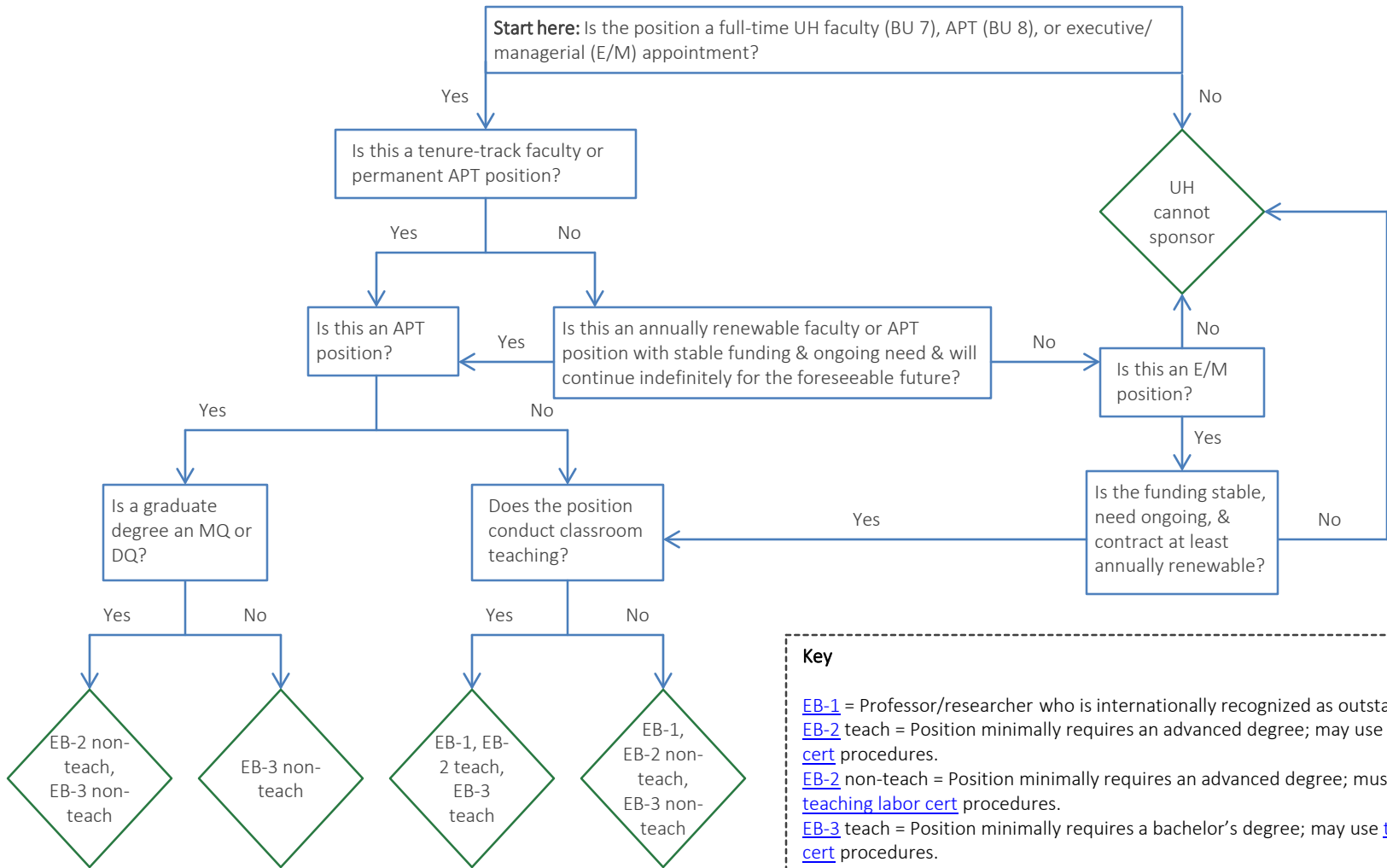


## Selecting the Proper EB Immigrant Category for a UH International Employee



**Key**

- [EB-1](#) = Professor/researcher who is internationally recognized as outstanding in the field.
- [EB-2](#) teach = Position minimally requires an advanced degree; may use [teaching labor cert](#) procedures.
- [EB-2](#) non-teach = Position minimally requires an advanced degree; must use [non-teaching labor cert](#) procedures.
- [EB-3](#) teach = Position minimally requires a bachelor's degree; may use [teaching labor cert](#) procedures.
- [EB-3](#) non-teach = Position minimally requires a bachelor's degree; must use [non-teaching labor cert](#) procedures.
- UH = University of Hawai'i.