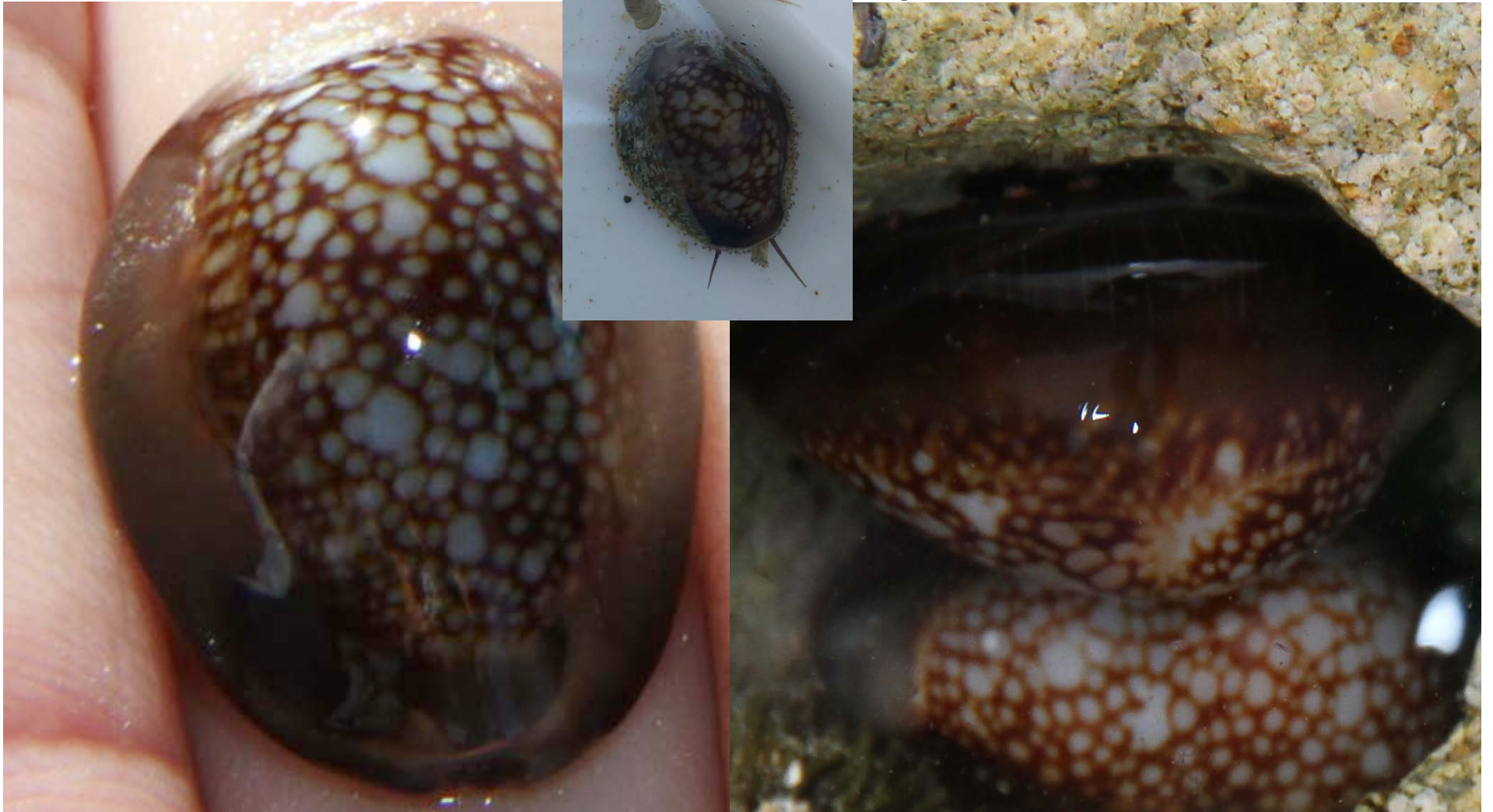


Intertidal Invert ID Review



Monetaria caputserpentis
(cowrie)



Monetaria moneta
(cowrie)



Holothuria atra
(sea cucumber)



Actinopyga mauritiana
(sea cucumber)

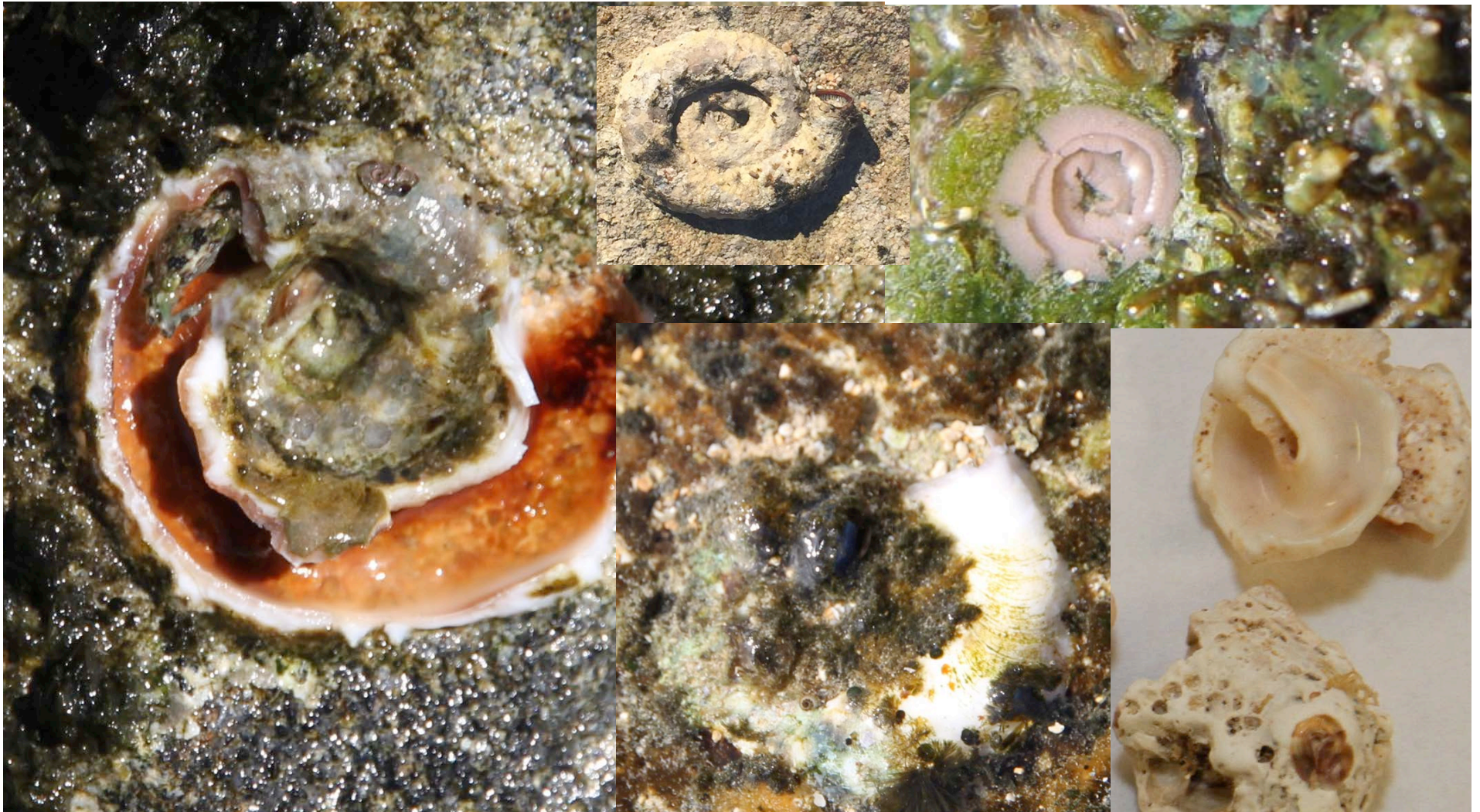


Hydatina amplustre
(bubble shell)

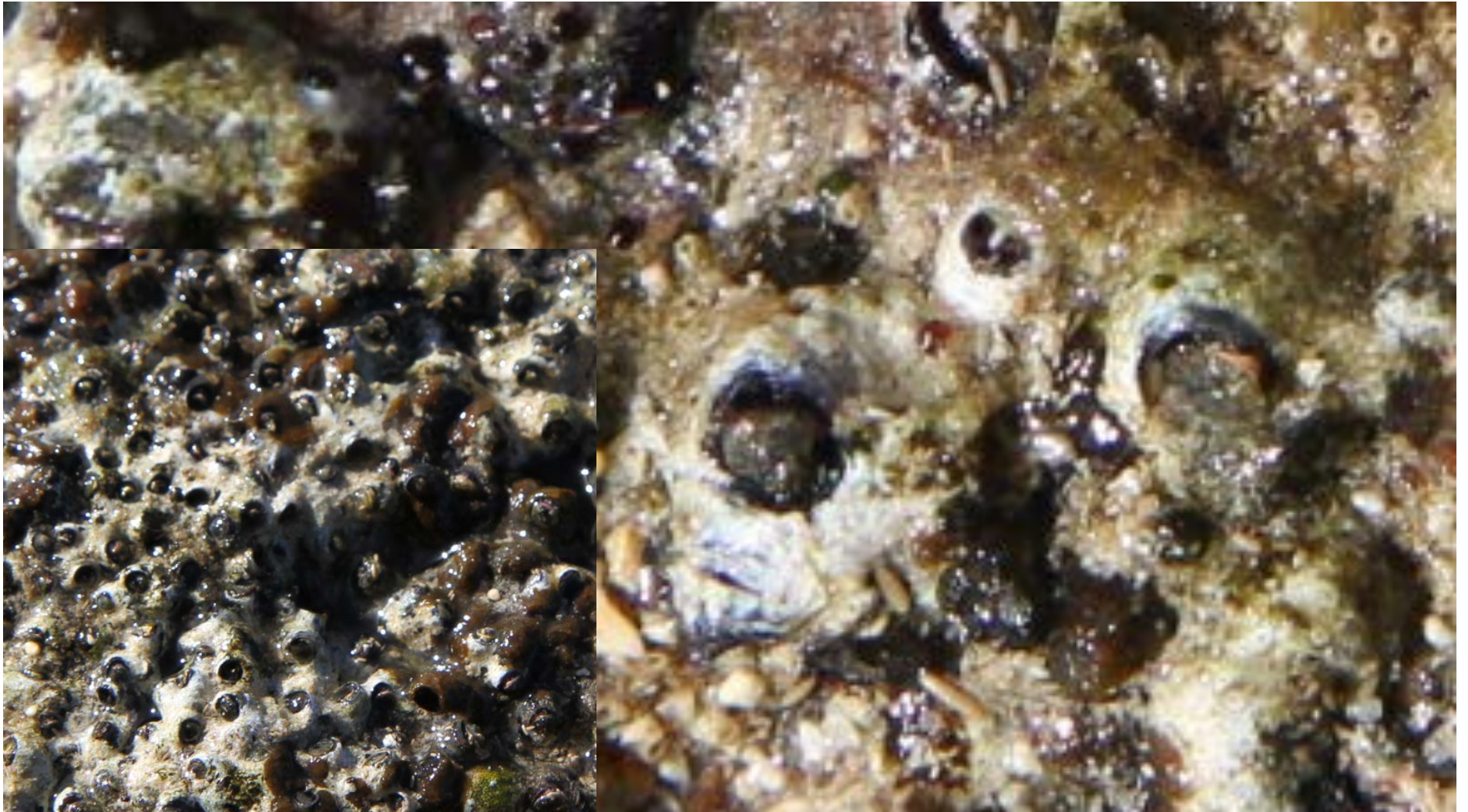


Serpulorbis spp.
(Vermetid worm snail)

Note some of this pics are just of shells, not live snails



Dendropoma gregaria
(Vermetid worm snail)



Littorina pintado &
Echinolittorina hawaiiensis (bottom right)



Nerita picea (snail)



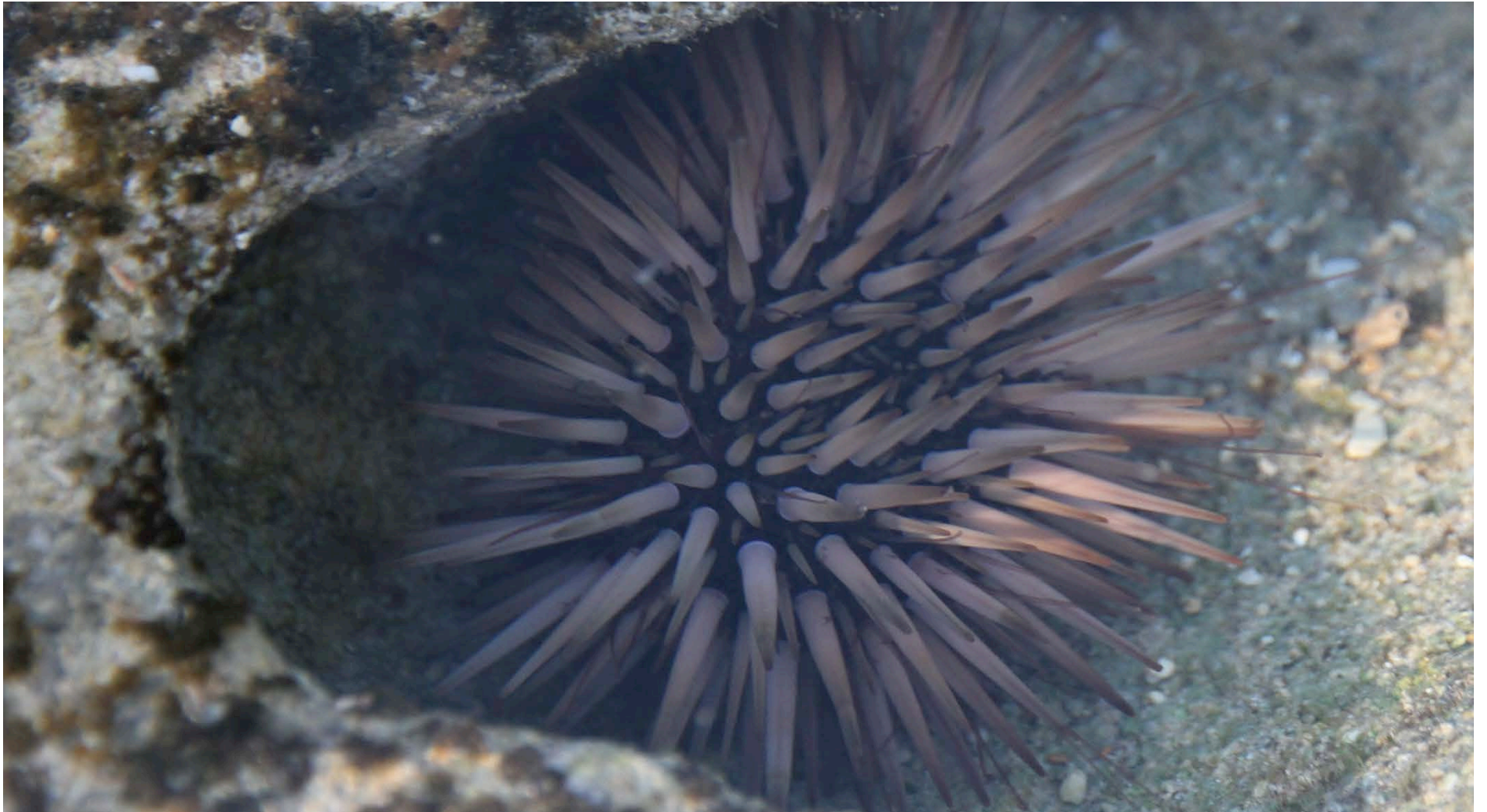
Zooanthid (cnidarian)



Ophiocoma erinaceus
(brittle star)



Echinometra mathaei
(urchin)



Colobocentrotus atratus
(helmet urchin)



Chiton



Siphonaria normalis
(limpet)



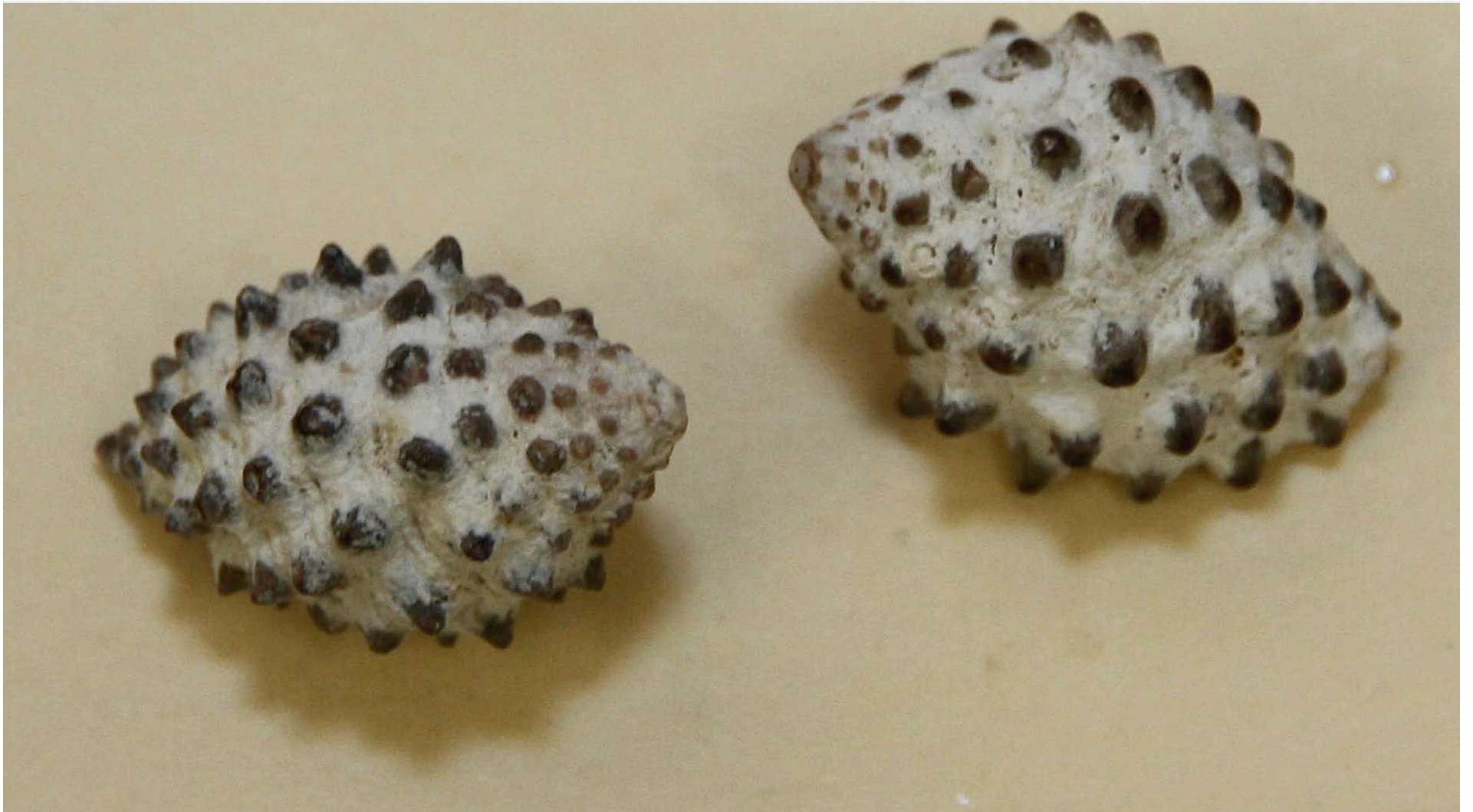
Cellana spp.
(limpet)



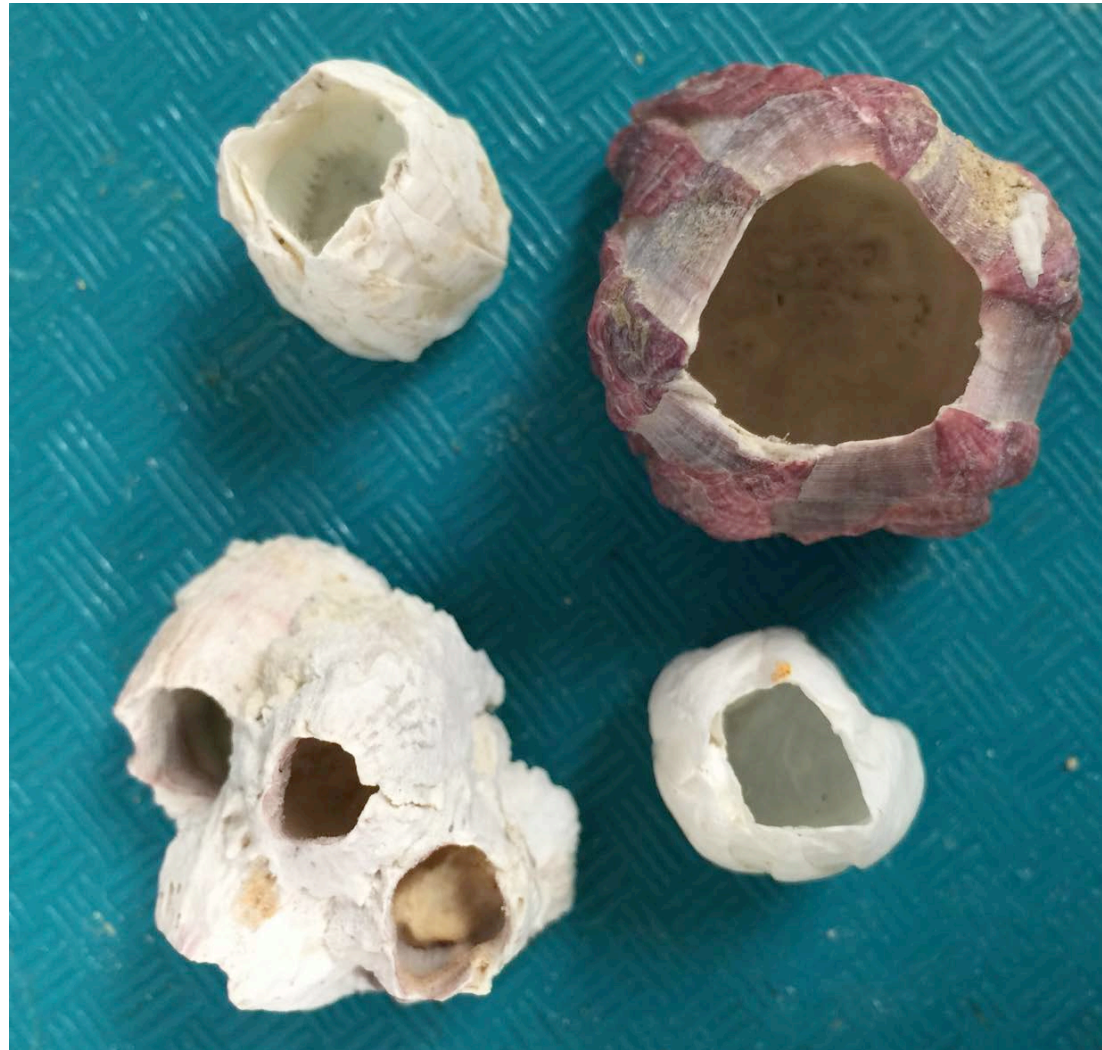
Drupa ricina



Morula uva



Barnacles



Isognomon perna
(white bivalve)



Trochus sp.



Turbo sp.

