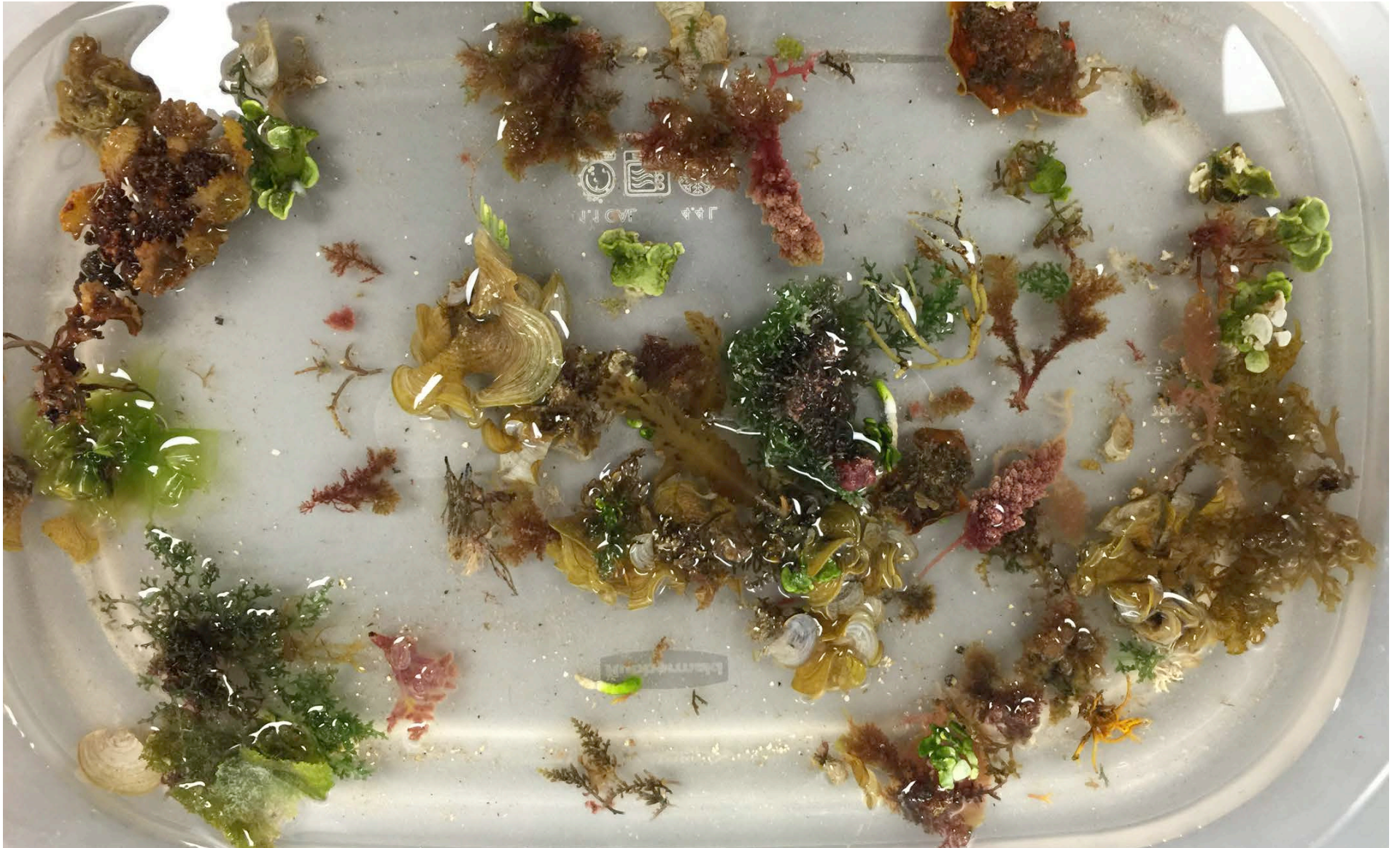


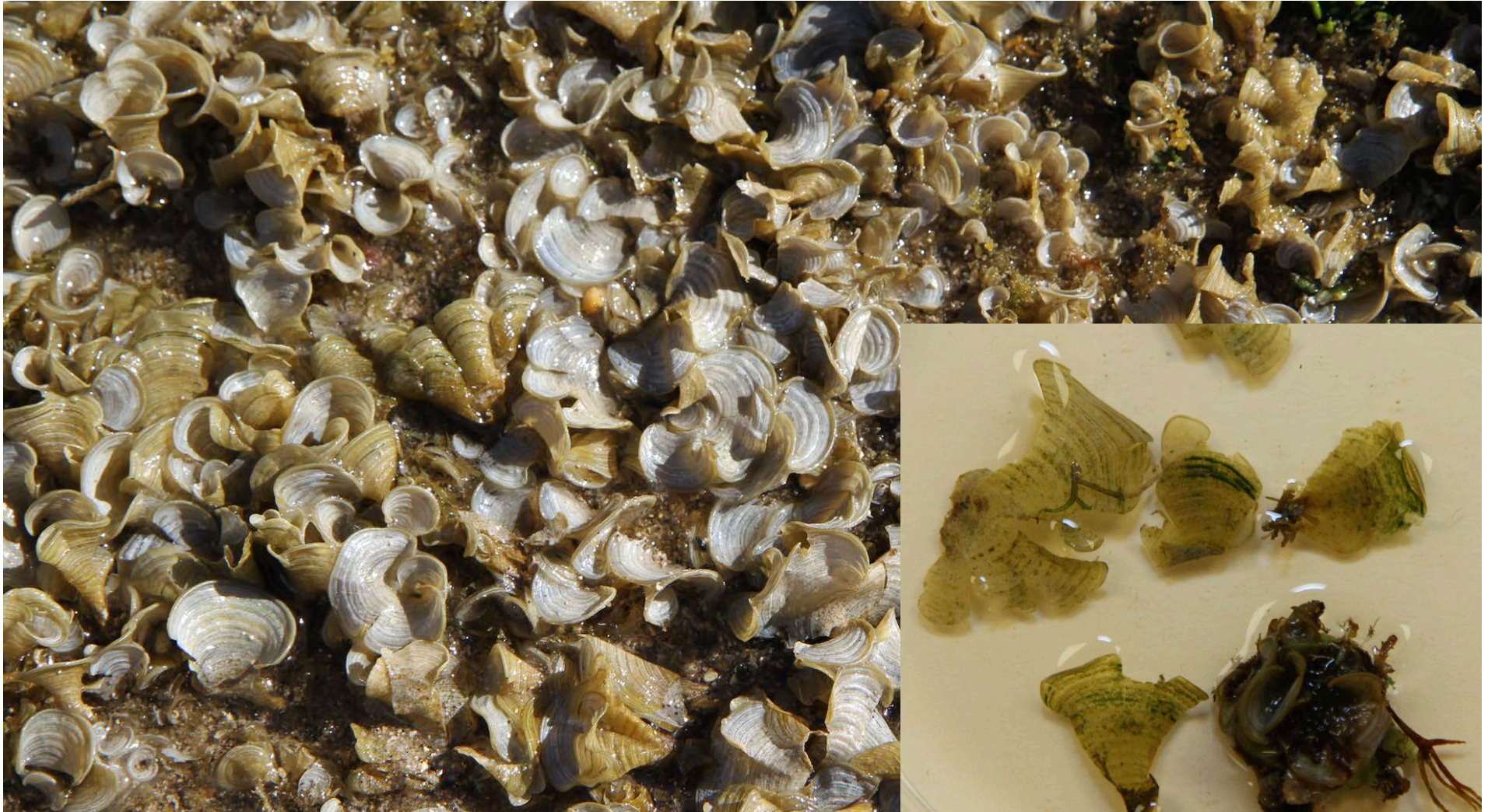
Intertidal Algae ID Review



?



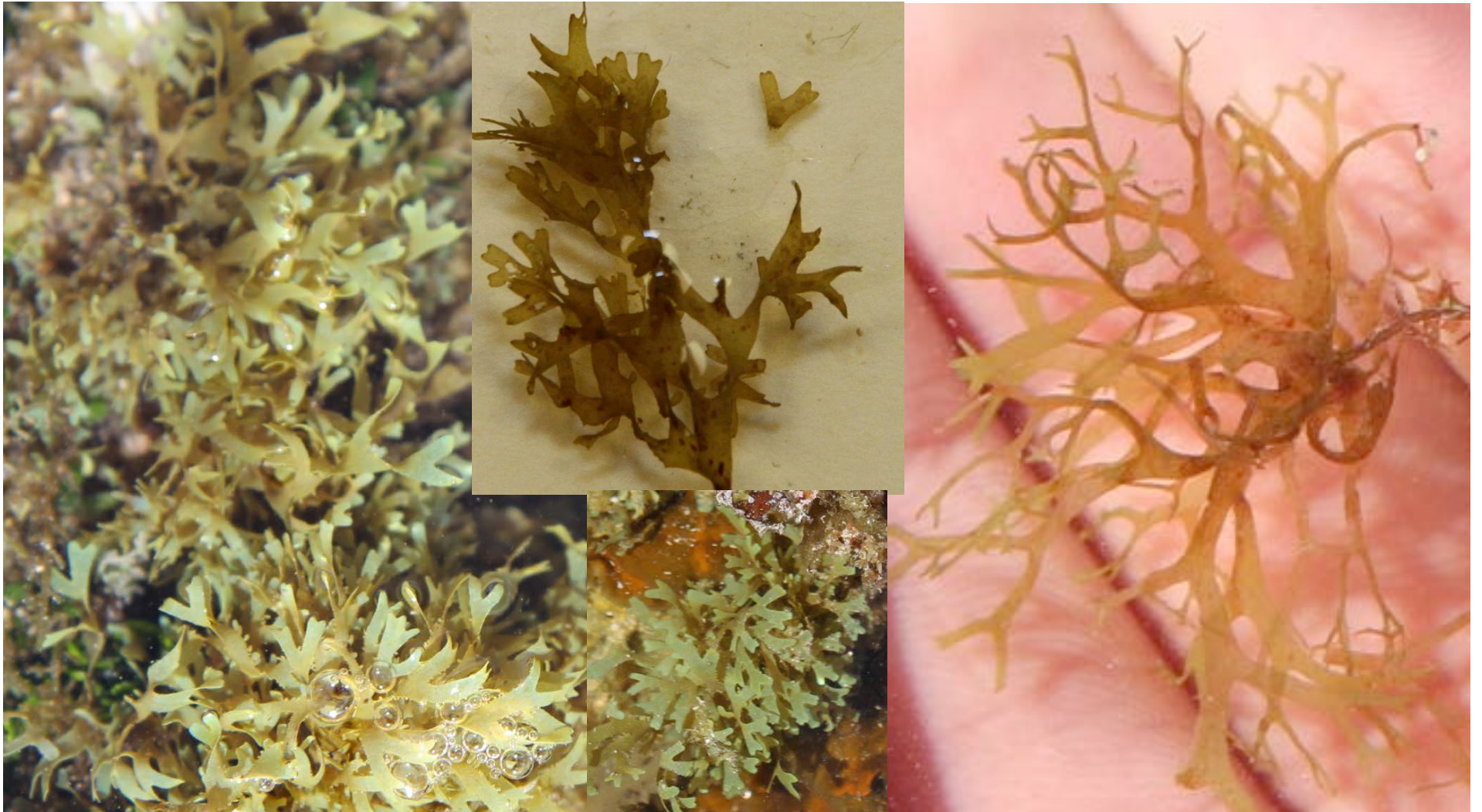
Padina sp. (brown)



?



Dictyota spp. (brown)



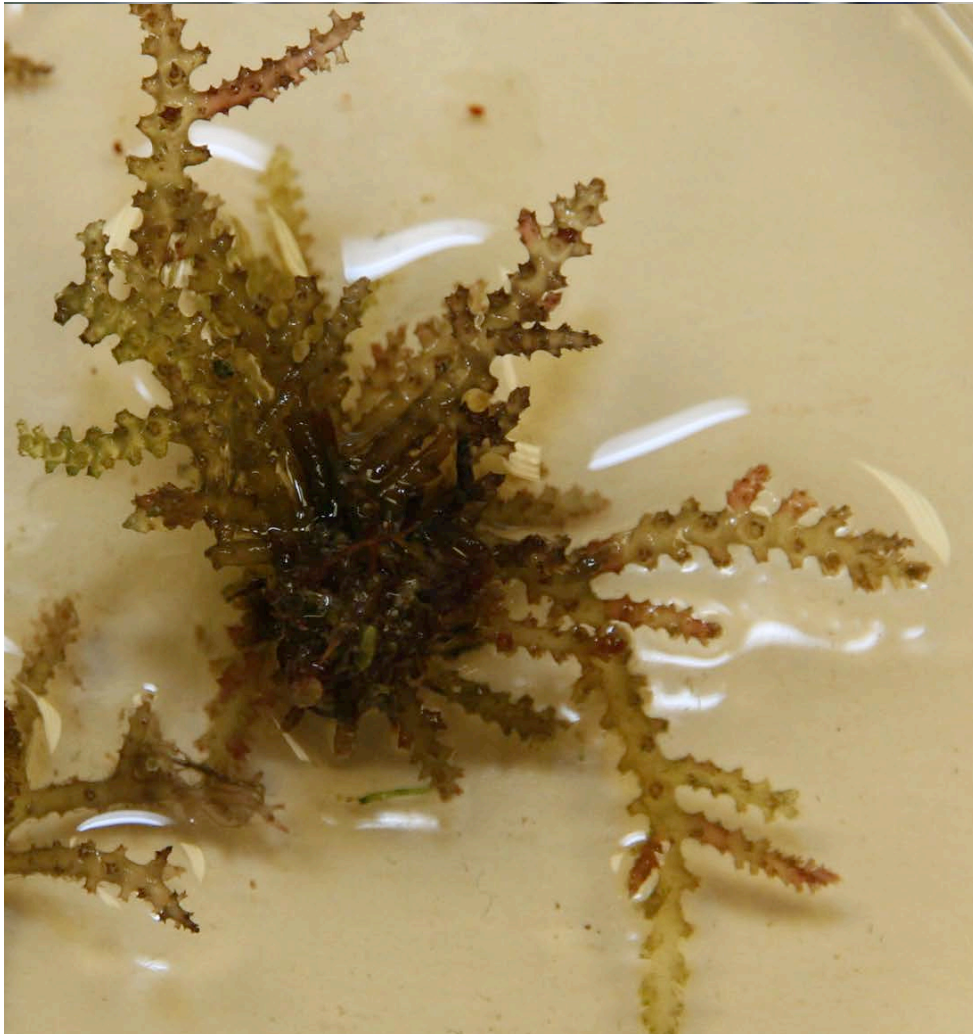
?



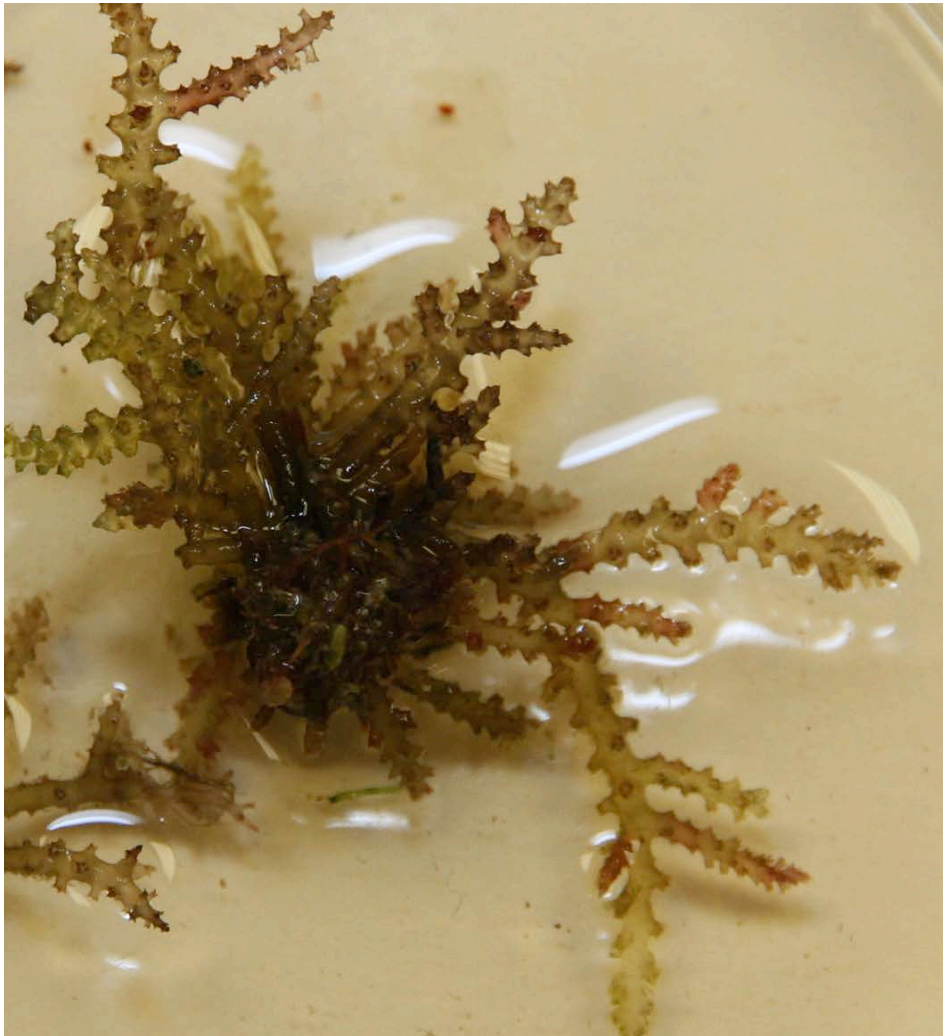
Microdictyon setchellianum
(green)



?



Acanthophora spicifera (red)



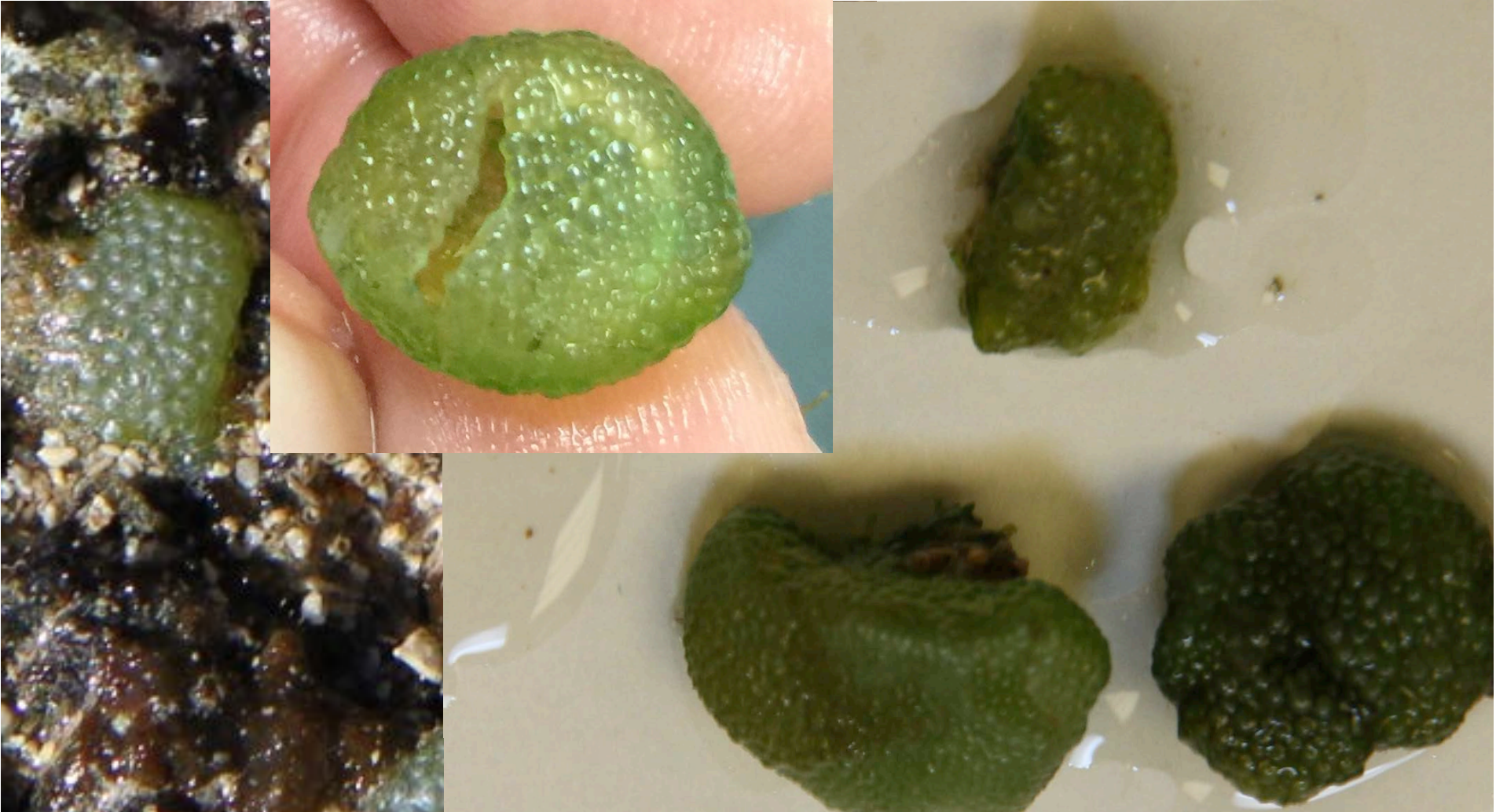
?



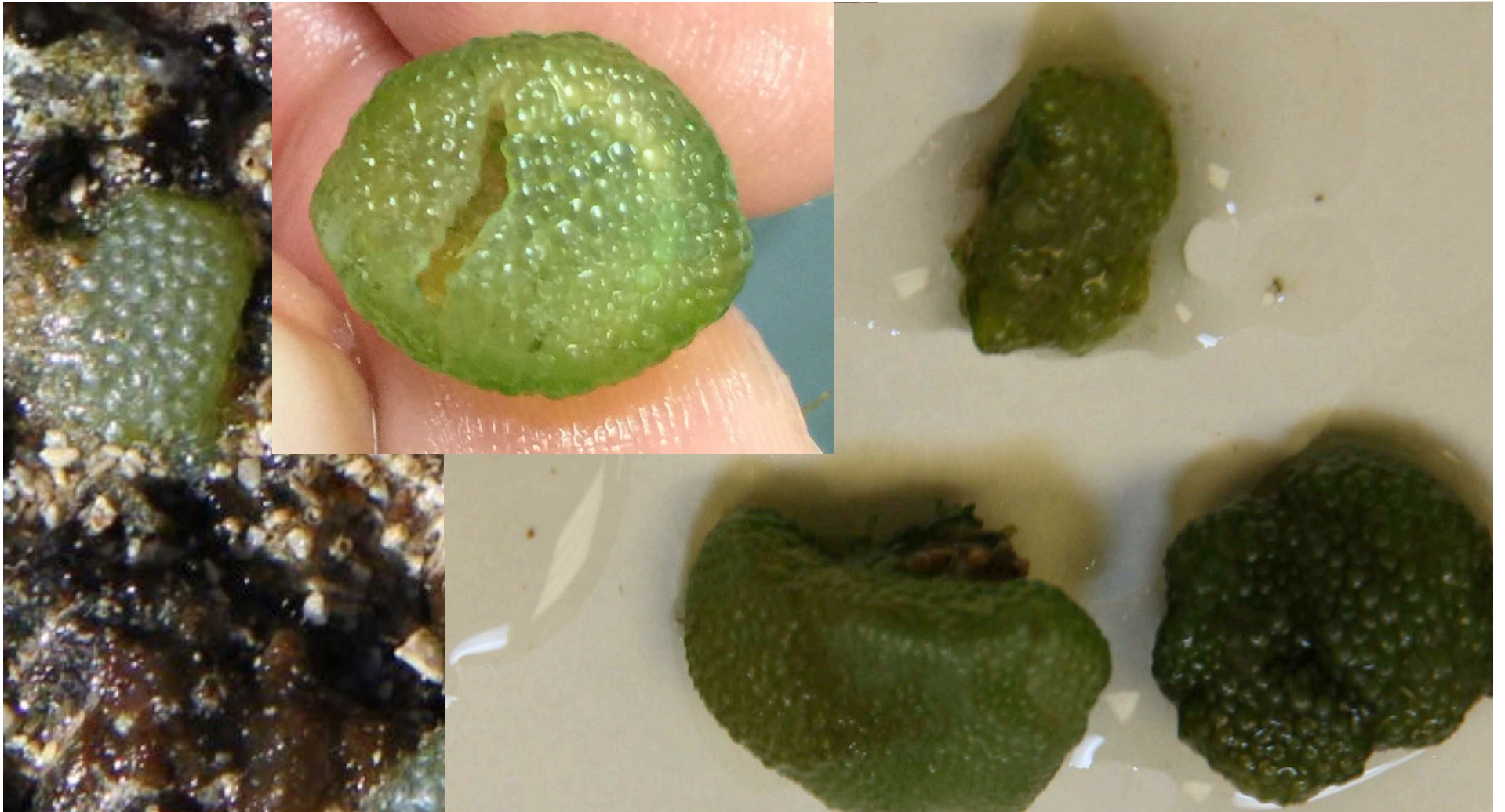
Lobophora variegata
(brown)



?



Dictyosphaeria spp. (green)



?



Turbinaria ornata (brown)



?



Codium edule (green)



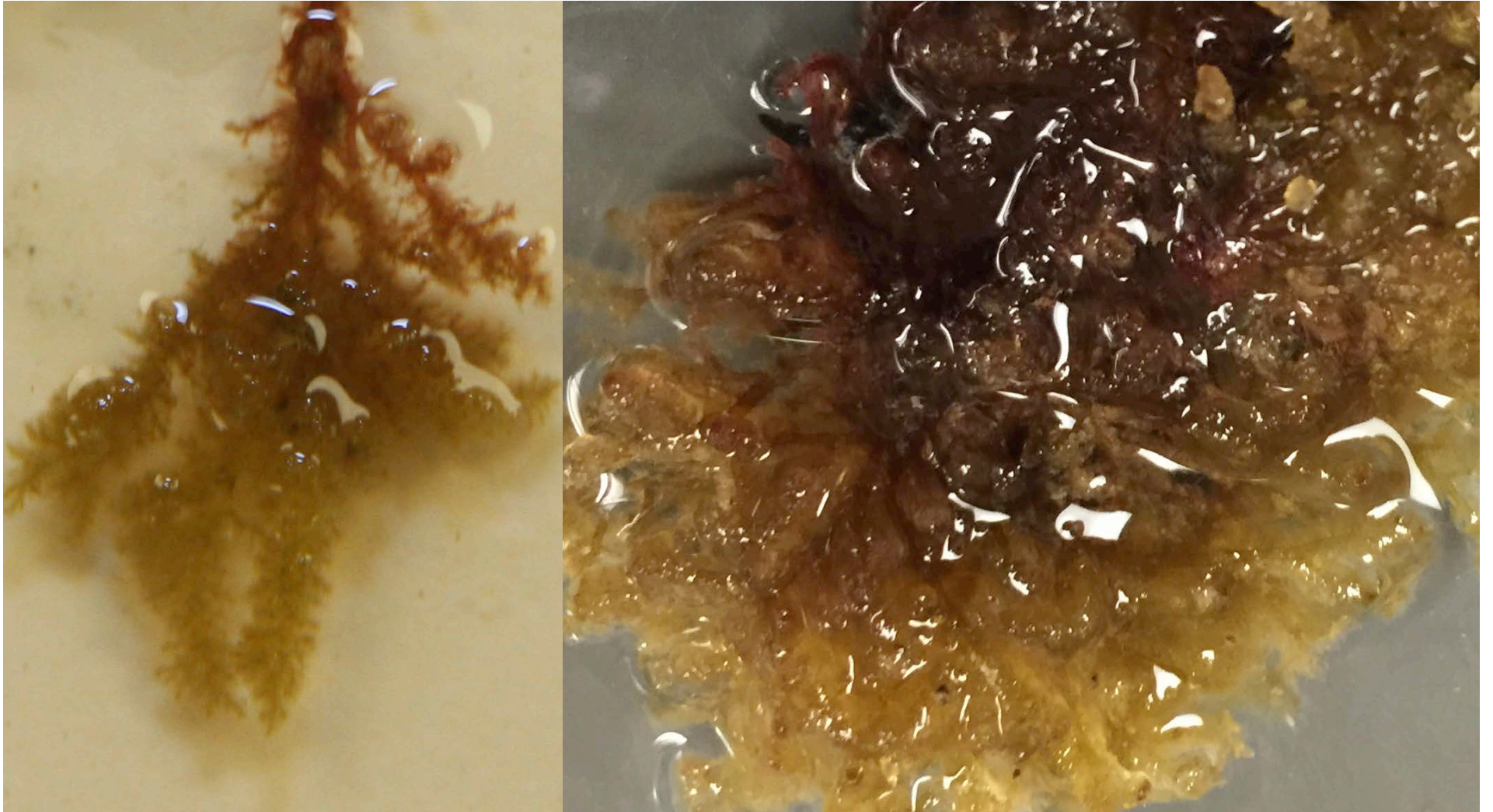
?



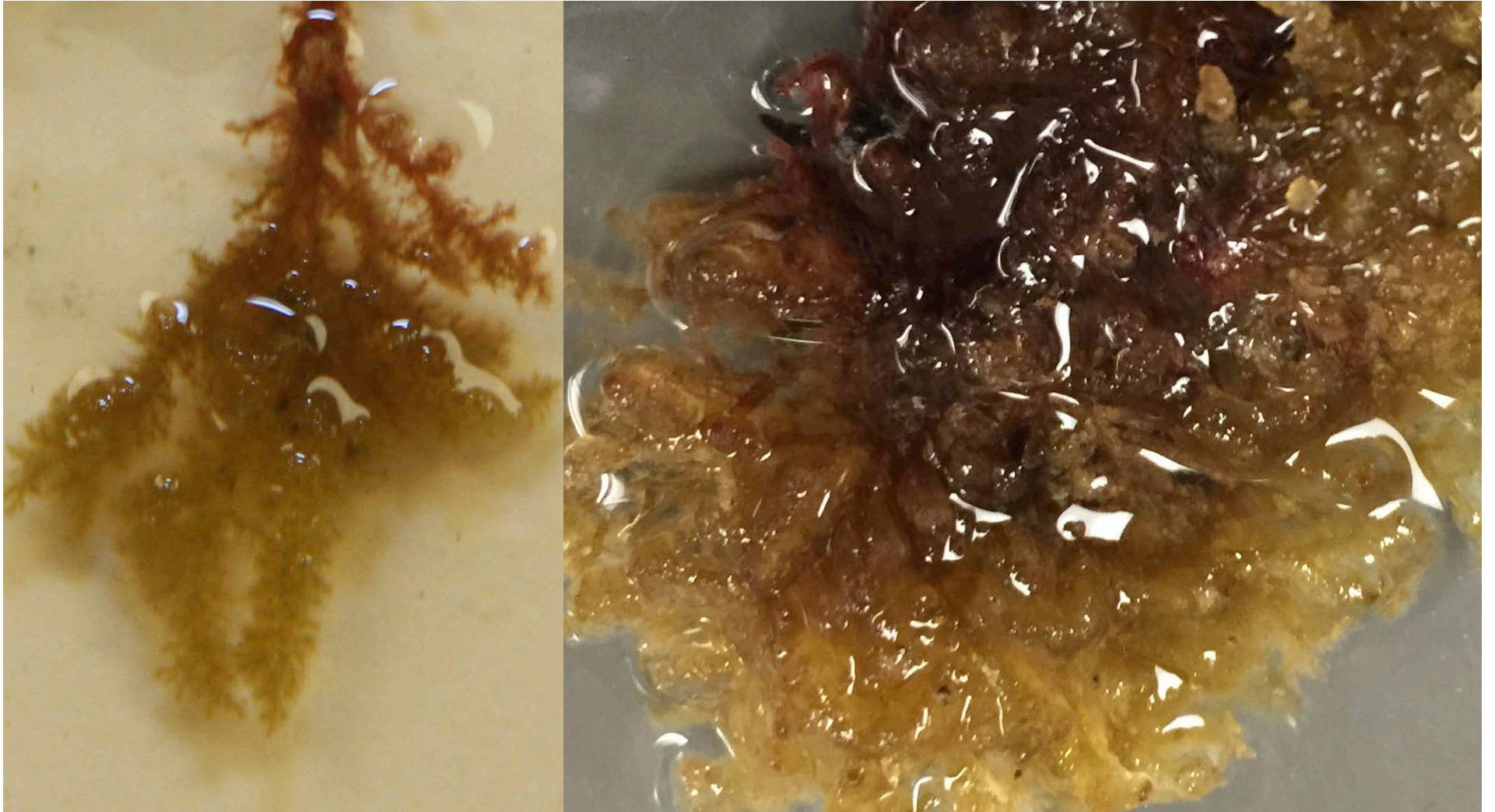
Asteronema breviarticulatum
(brown)



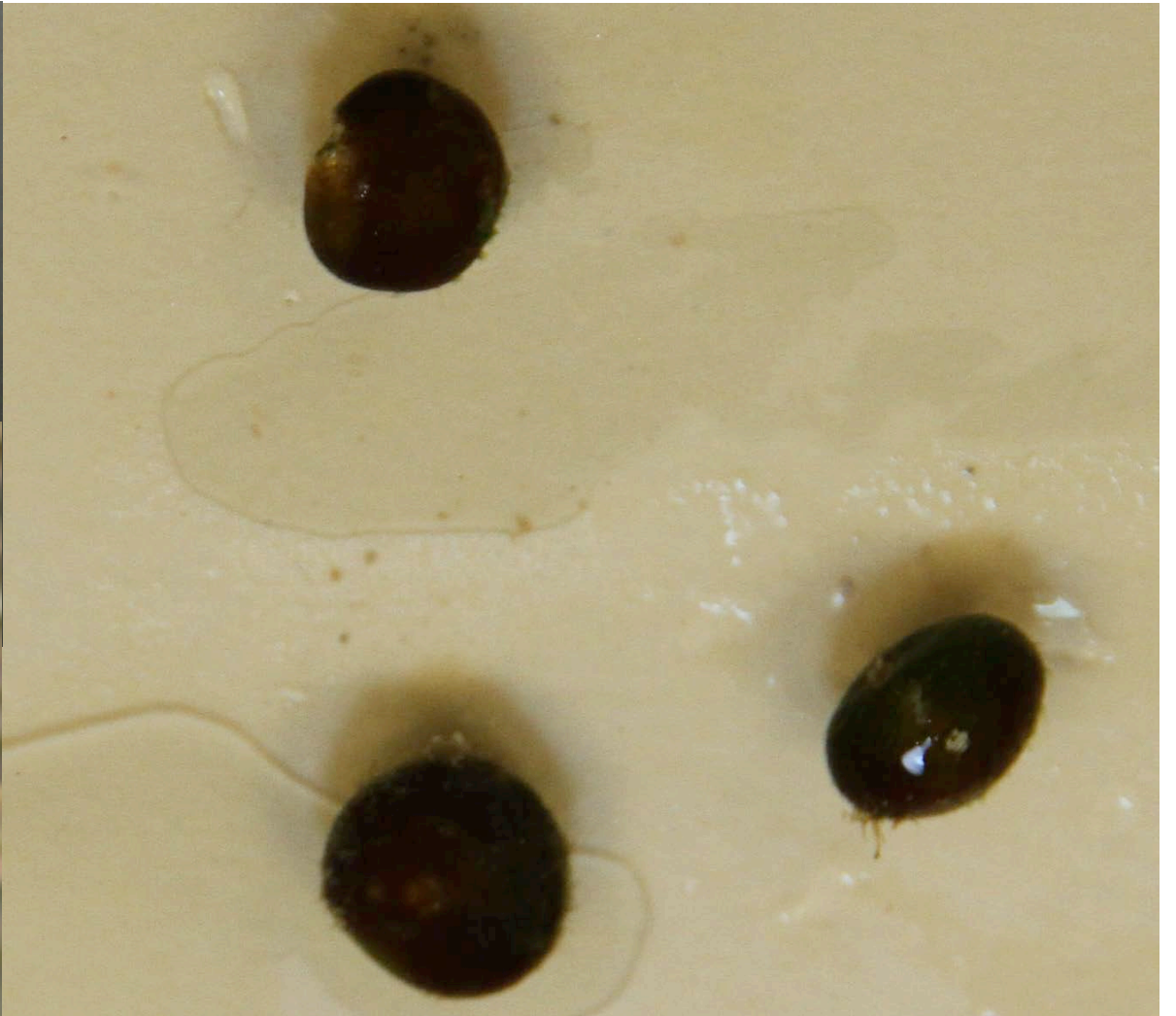
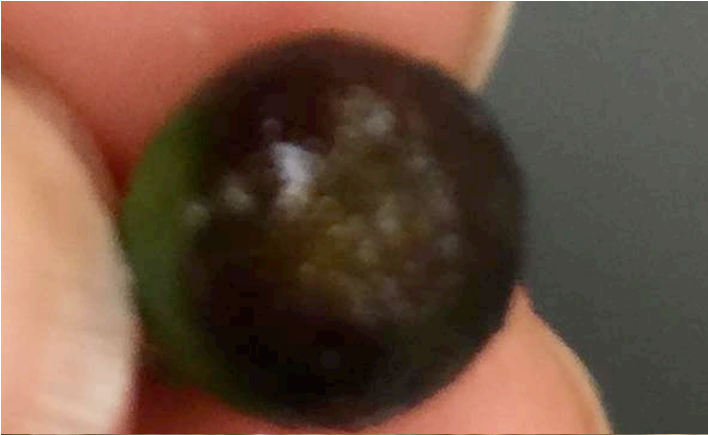
?



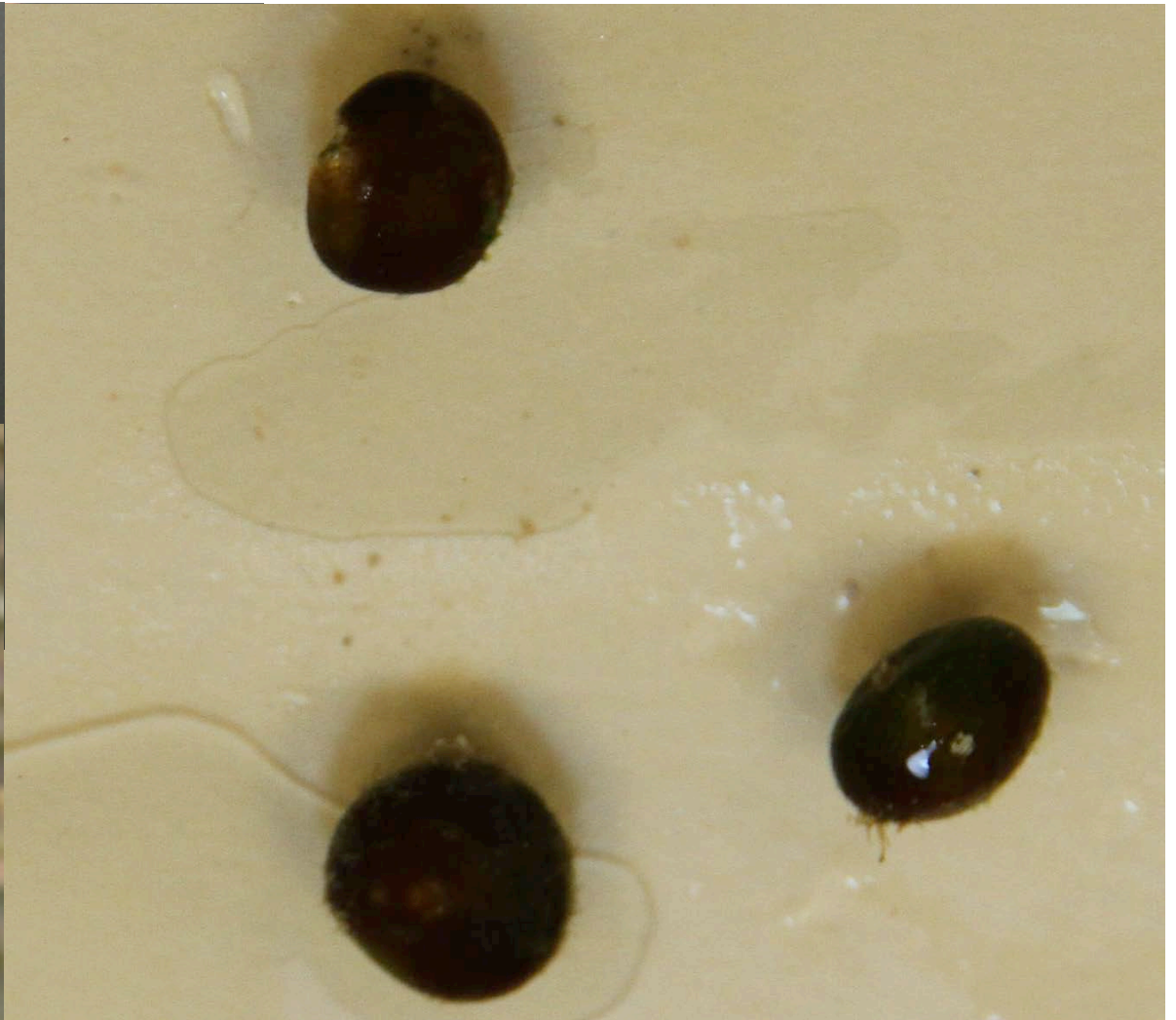
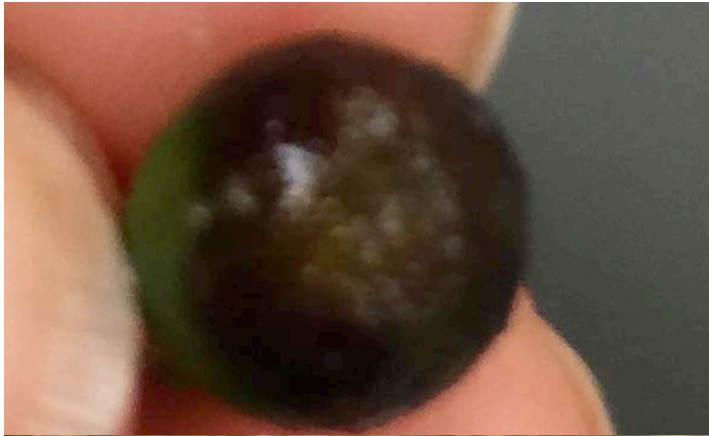
Spyridia sp. (brown)



?



Bornetella sphaerica (green)



?



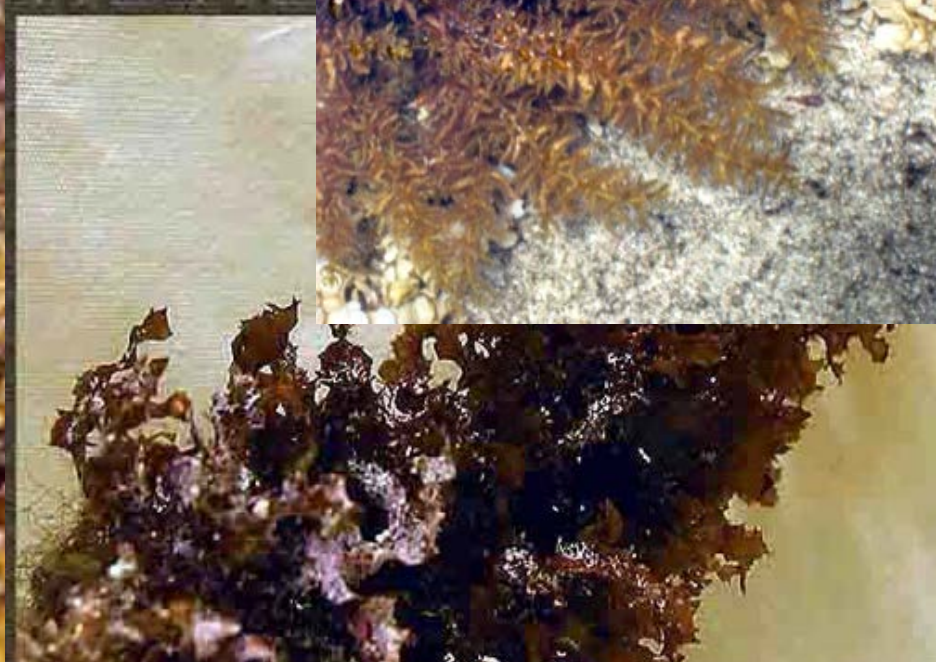
Hydroclathrus clathratus
(brown)



?



Sargassum spp. (brown)



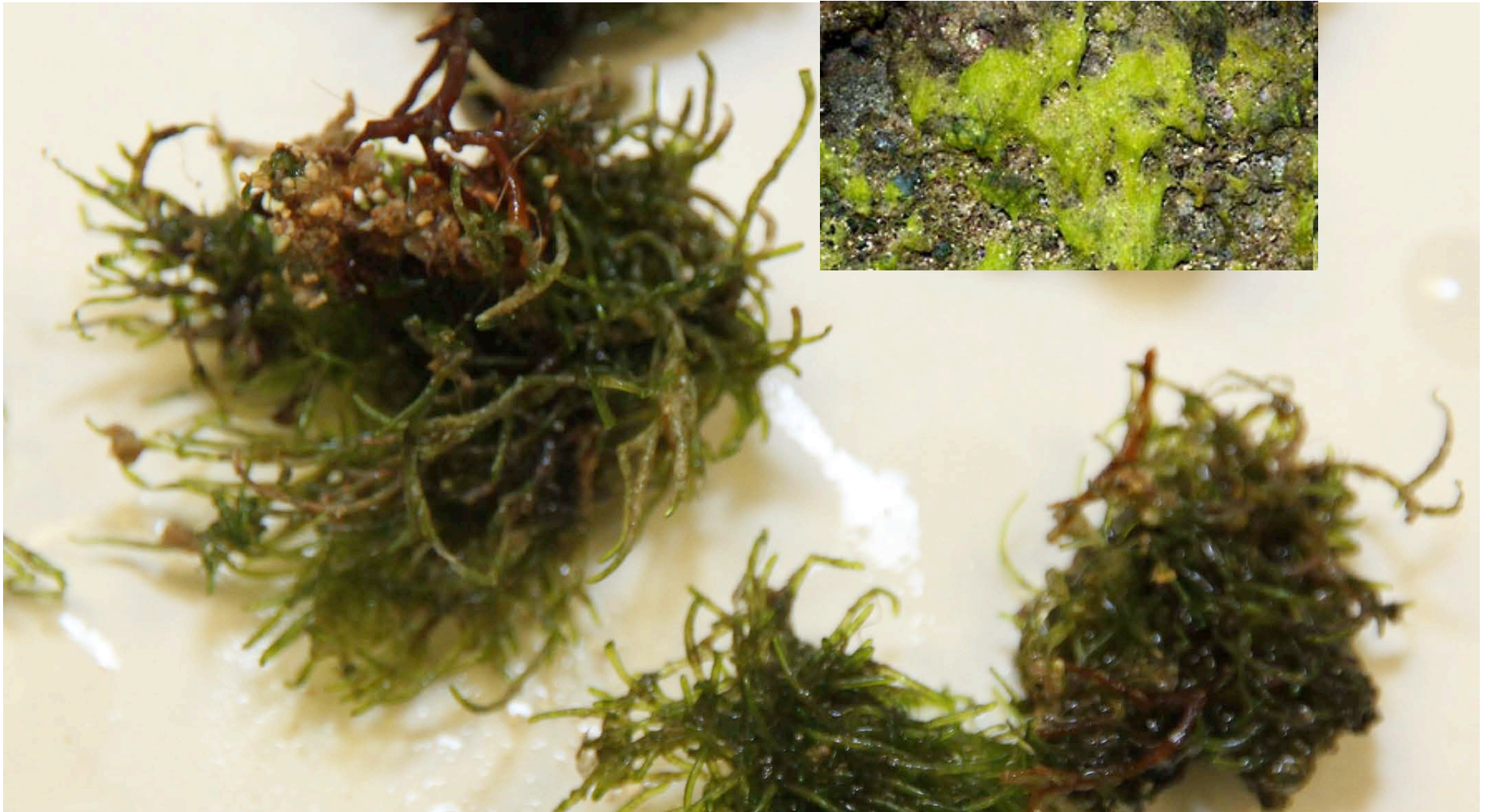
?



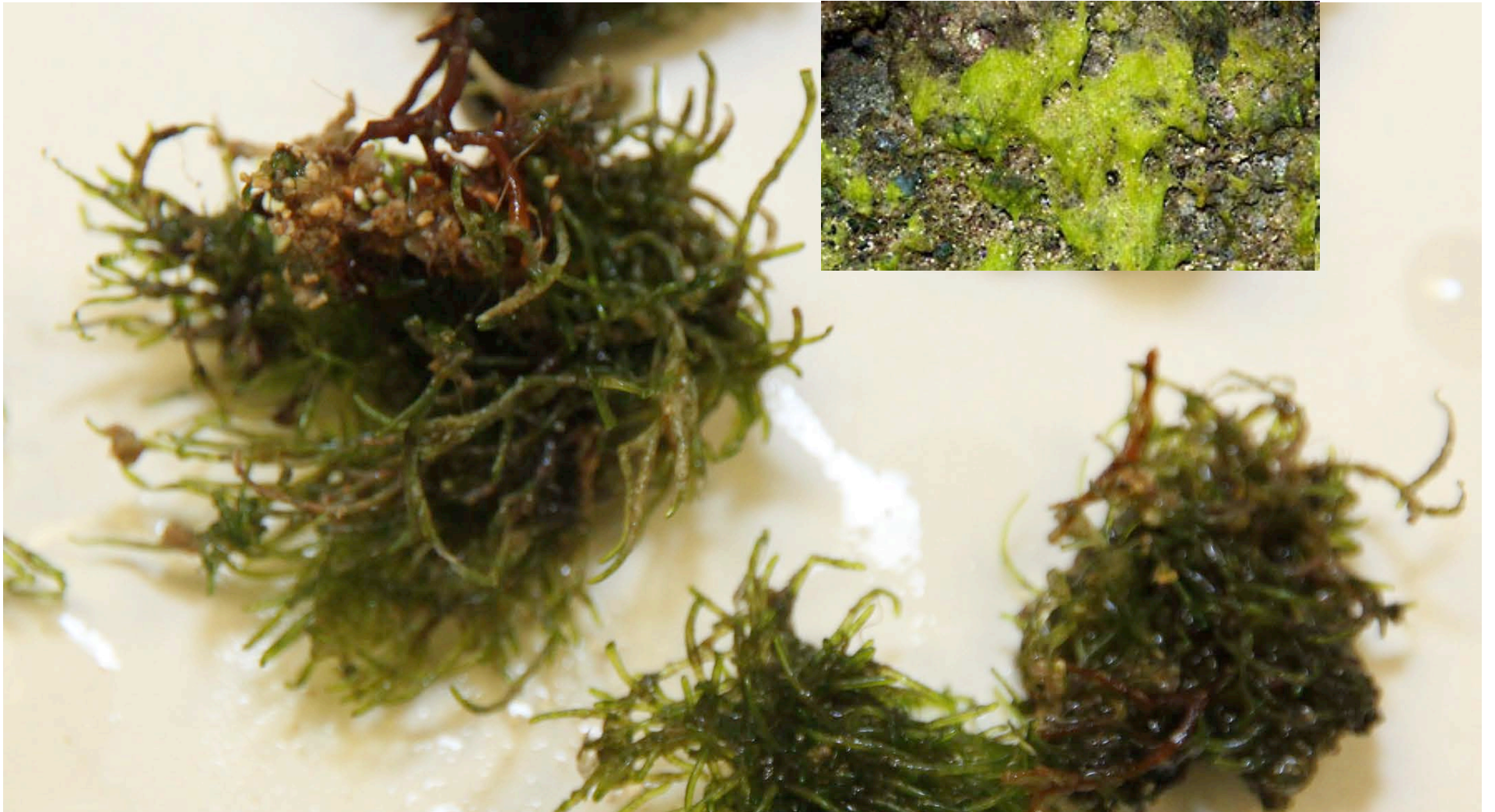
Ulva spp. (green)



?



Cladophora/Cladophoropsis
spp. (green)



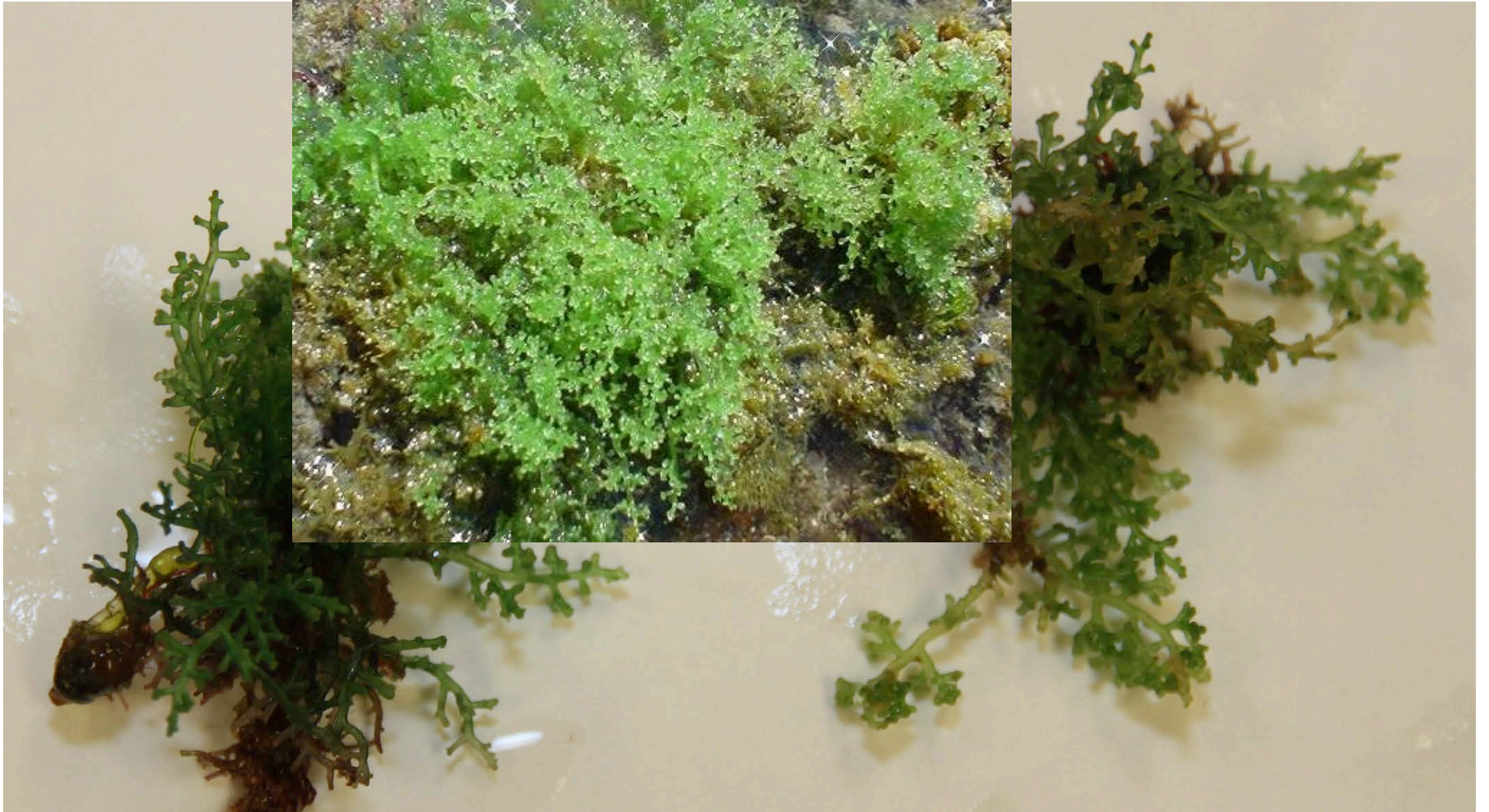
?



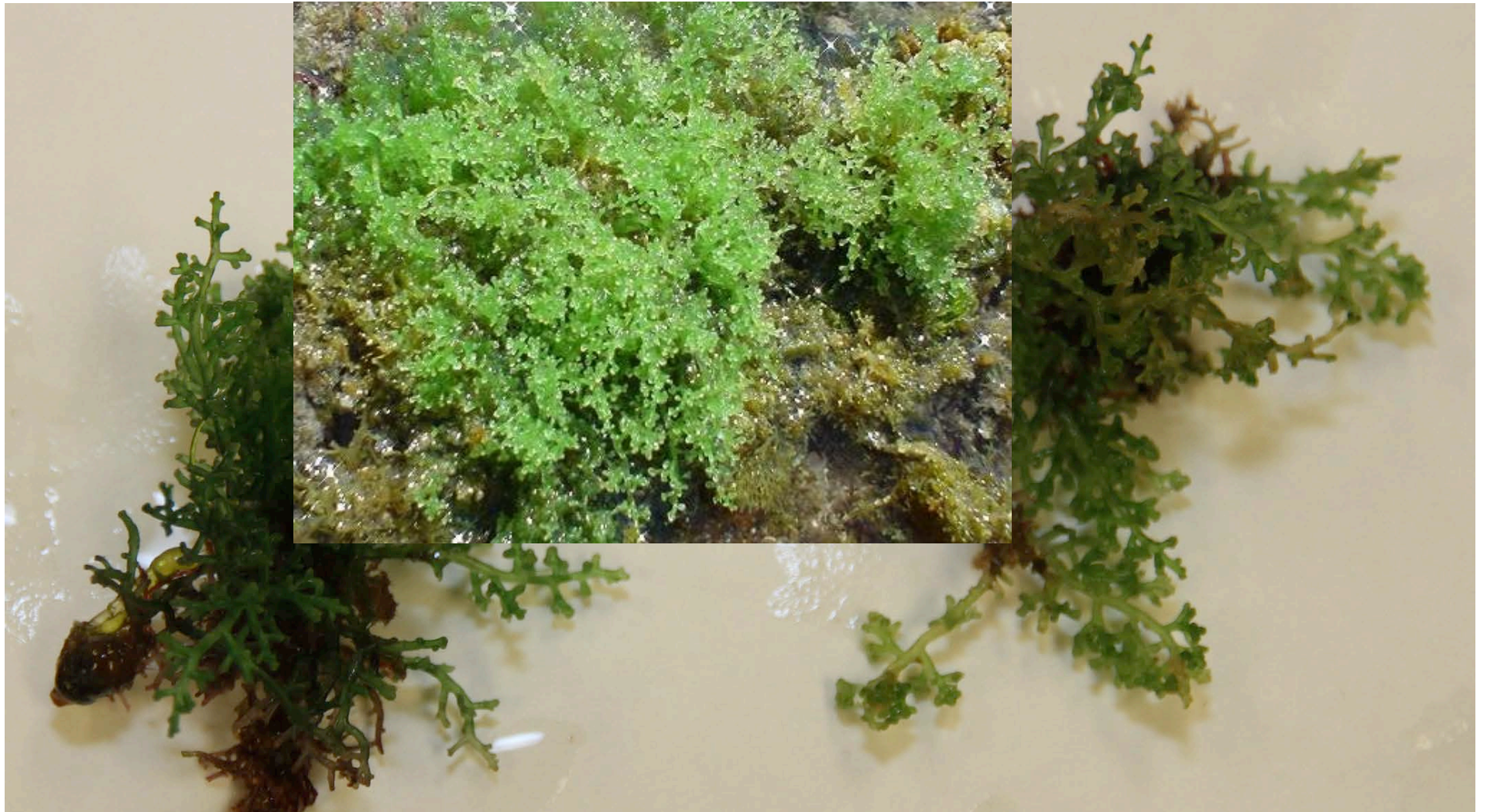
Amansia glomerata (red)



?



Laurencia mcdermidiae (red)



?



Blue-greens (*Leptolyngbya* sp., *Symploca* sp., blue-green mat, *Lyngbya* sp.)



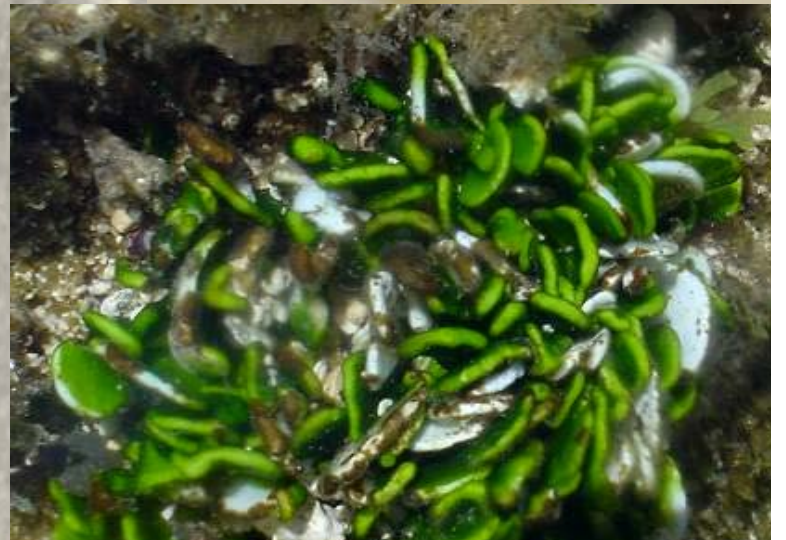
?



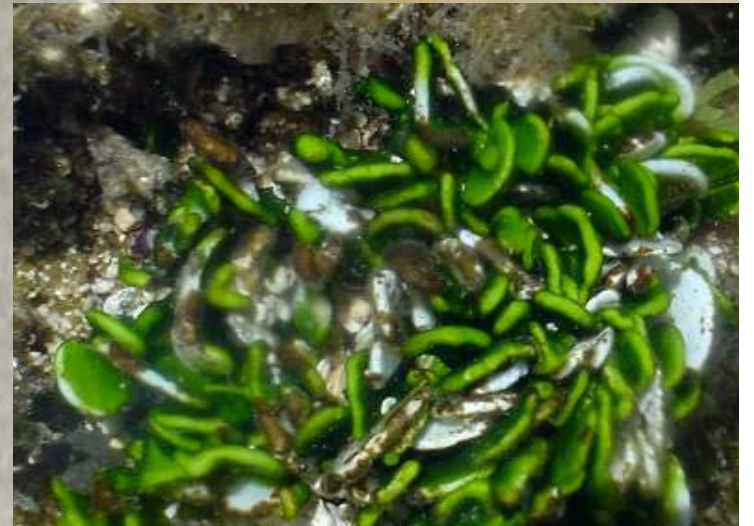
Caulerpa spp. (green)



?



Halimeda sp. (green)



?



Liagora/Galaxaura spp. (red)



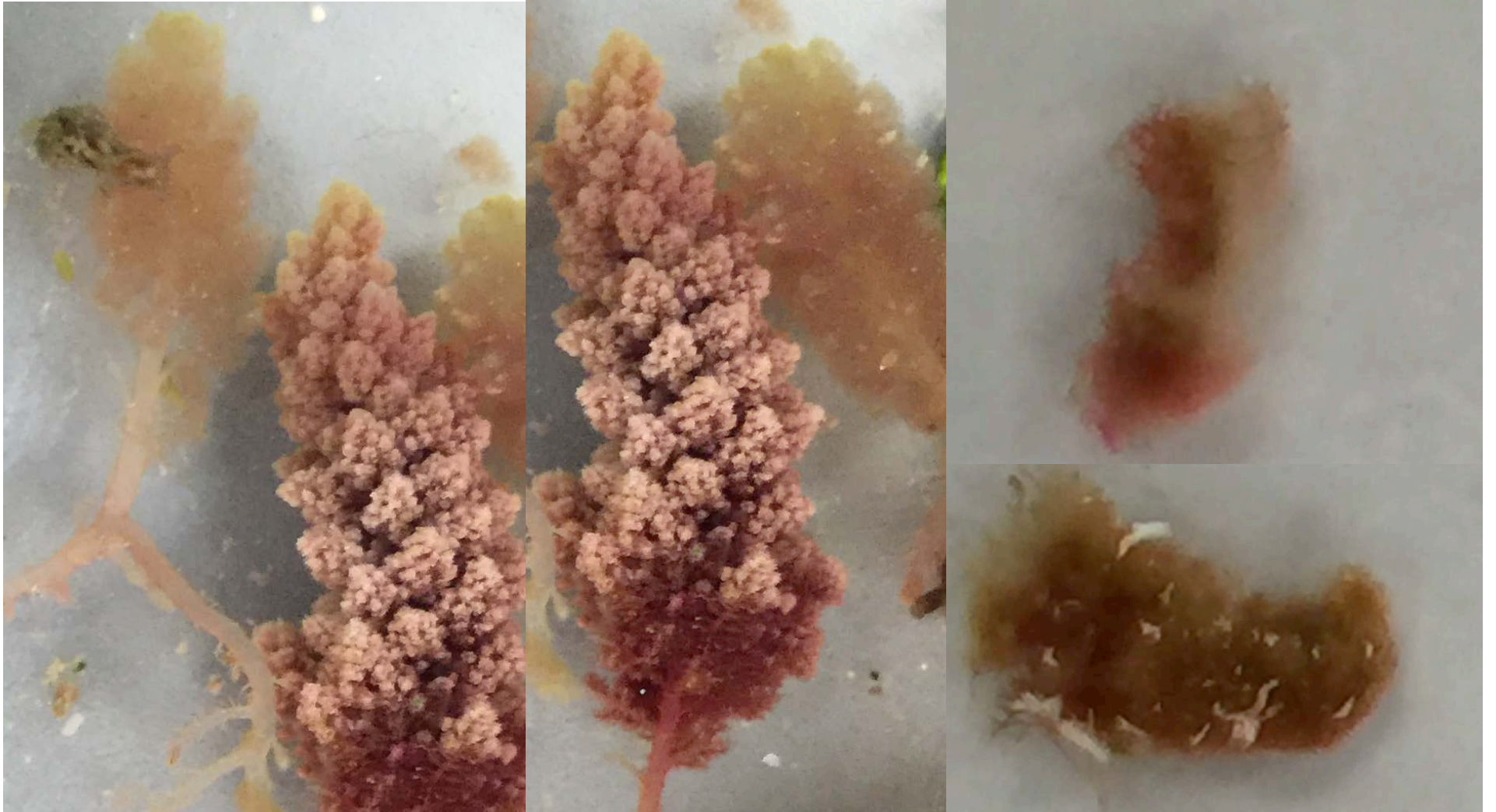
?



Brown-colored crust

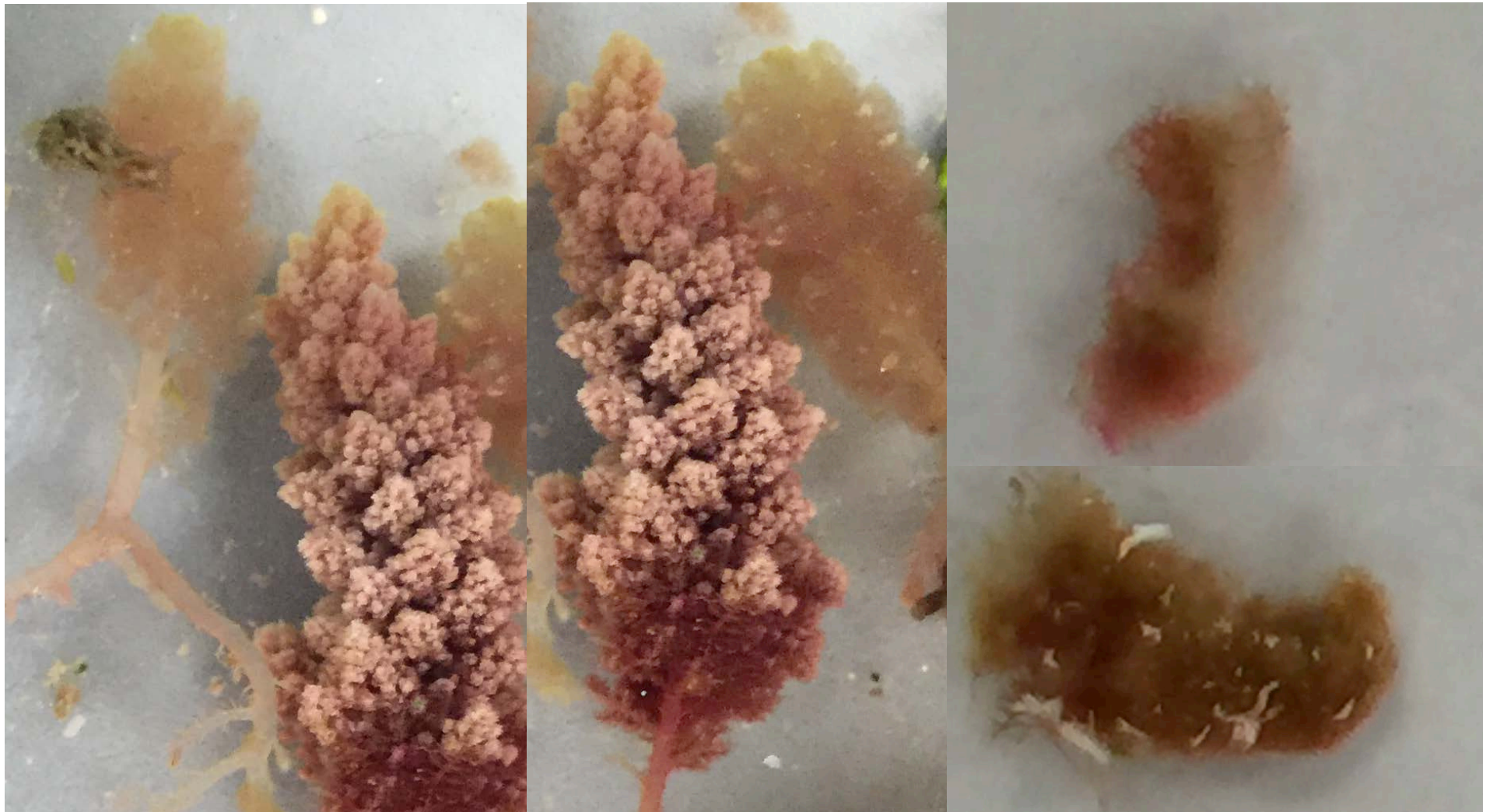


?



Asparagopsis taxiformis (red)

(falkenbergia phase on right)



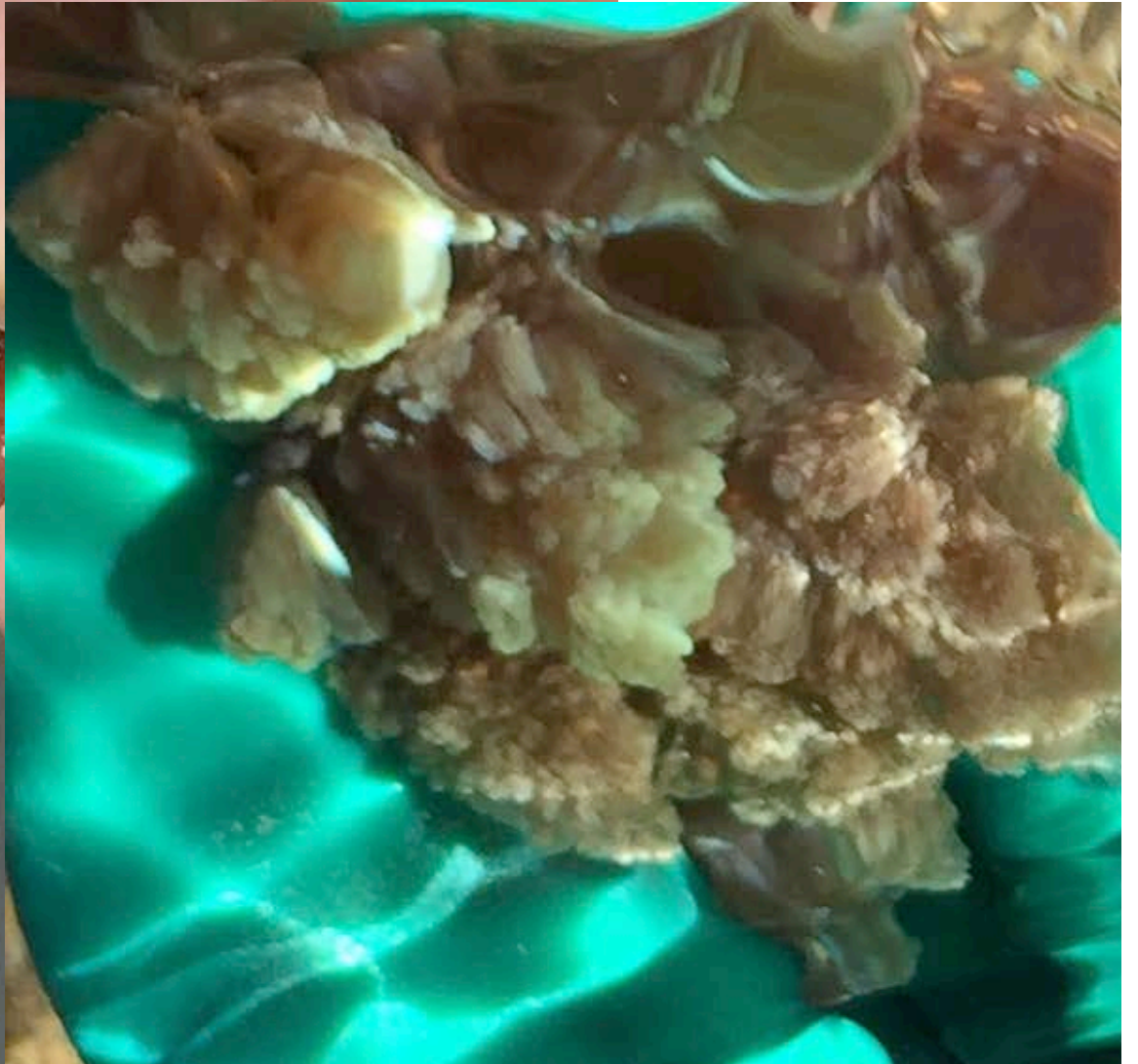
?



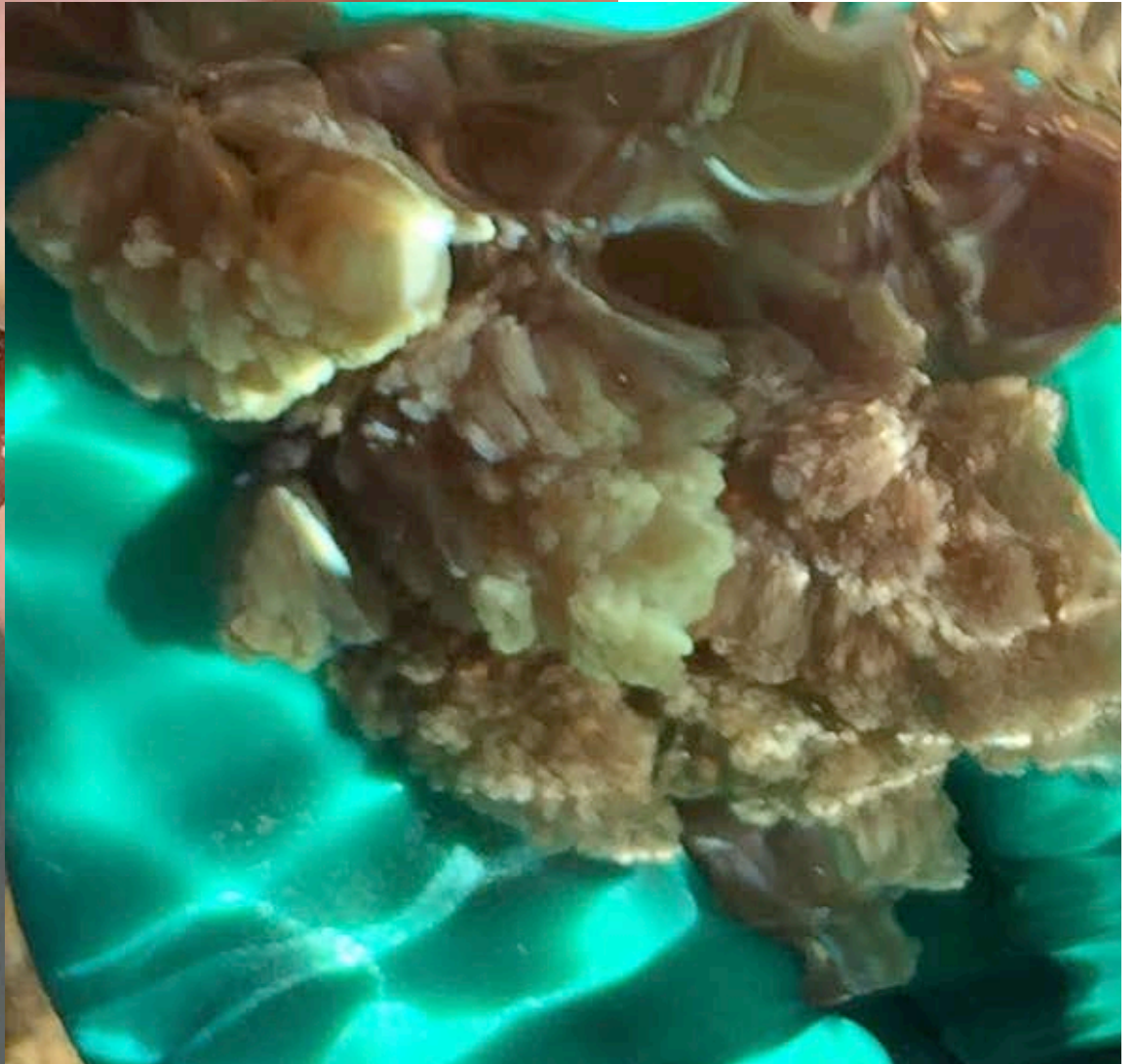
Neomeris spp.



?



Daysia sp. (red)



?



Pterocladia sp. (red)



?



Ahnfeltiopsis sp. (red)



?



Chnoospora minima (brown)



?



Colpomenia sinuosa (brown)

