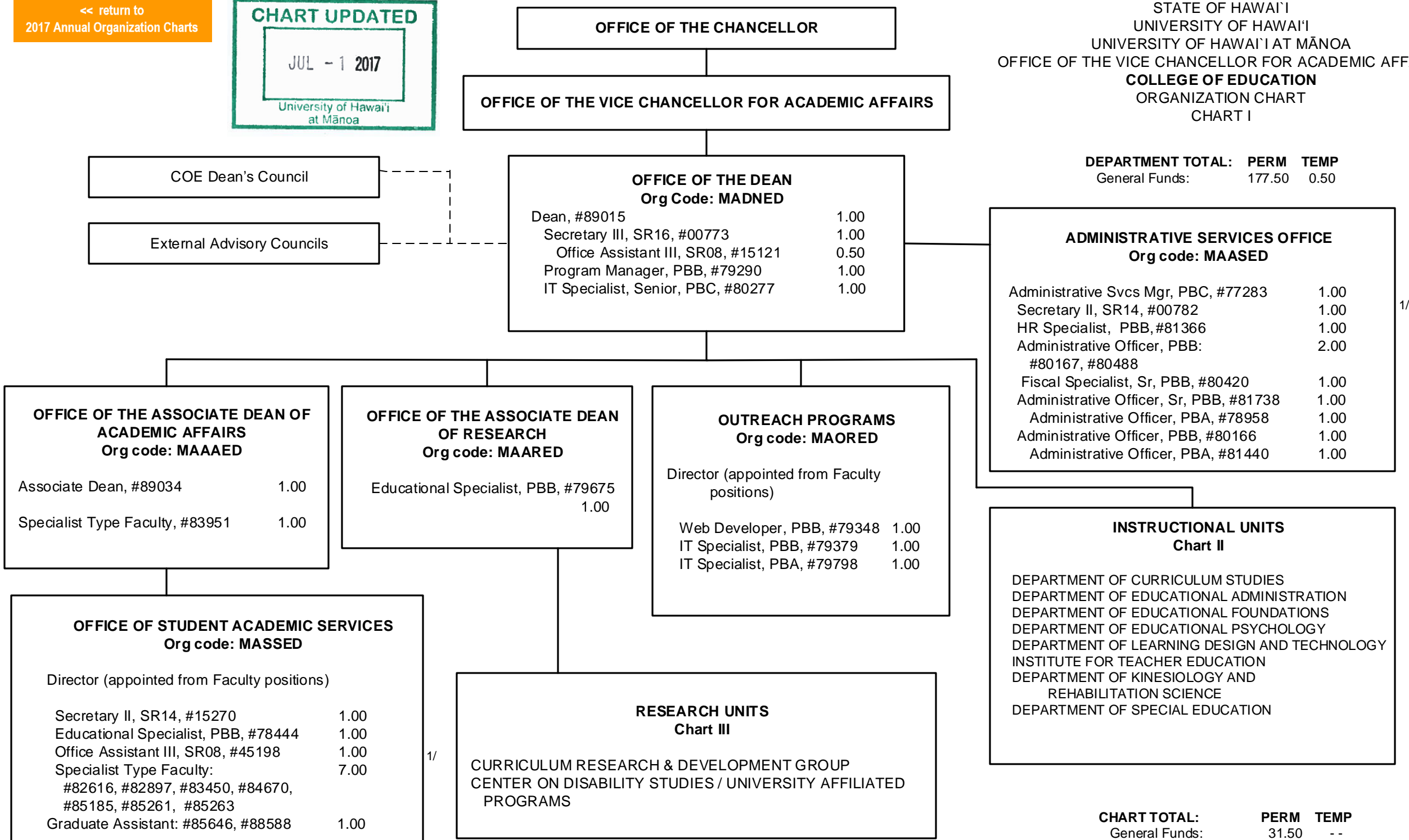




STATE OF HAWAII
UNIVERSITY OF HAWAII
UNIVERSITY OF HAWAII AT MĀNOA
OFFICE OF THE VICE CHANCELLOR FOR ACADEMIC AFFAIRS
COLLEGE OF EDUCATION
ORGANIZATION CHART
CHART I



DEPARTMENT TOTAL: PERM TEMP
General Funds: 177.50 0.50

ADMINISTRATIVE SERVICES OFFICE
Org code: MAASED

Administrative Svcs Mgr, PBC, #77283	1.00
Secretary II, SR14, #00782	1.00
HR Specialist, PBB, #81366	1.00
Administrative Officer, PBB: #80167, #80488	2.00
Fiscal Specialist, Sr, PBB, #80420	1.00
Administrative Officer, Sr, PBB, #81738	1.00
Administrative Officer, PBA, #78958	1.00
Administrative Officer, PBB, #80166	1.00
Administrative Officer, PBA, #81440	1.00

- INSTRUCTIONAL UNITS**
Chart II
- DEPARTMENT OF CURRICULUM STUDIES
 - DEPARTMENT OF EDUCATIONAL ADMINISTRATION
 - DEPARTMENT OF EDUCATIONAL FOUNDATIONS
 - DEPARTMENT OF EDUCATIONAL PSYCHOLOGY
 - DEPARTMENT OF LEARNING DESIGN AND TECHNOLOGY
 - INSTITUTE FOR TEACHER EDUCATION
 - DEPARTMENT OF KINESIOLOGY AND REHABILITATION SCIENCE
 - DEPARTMENT OF SPECIAL EDUCATION

CHART TOTAL: PERM TEMP
General Funds: 31.50 --

1/ #45198 and #00782 abolished, pending re-establishment

STATE OF HAWAII
UNIVERSITY OF HAWAII
UNIVERSITY OF HAWAII AT MANOA
OFFICE OF THE VICE CHANCELLOR FOR ACADEMIC AFFAIRS
COLLEGE OF EDUCATION

FUNCTIONAL STATEMENT

OFFICE OF THE DEAN – Org Code: MADNED

The College of Education (COE) consists of educators who provide innovative and cutting-edge research and teaching in an effort to further the field of education, and to prepare educators and leaders in Hawai'i for future careers in teaching and leadership positions. Working in partnership with Hawai'i's Department of Education, Hawai'i Teachers Standards Board and private schools, the College of Education provides professional development and licensure opportunities for educators as well as prepares researchers and professionals for fields beyond Pre/K-12 education and in non-school settings.

The Office of the Dean directs, plans, coordinates, and supports the various departments and units within the College of Education in instruction, organized research, budget management, program and fiscal management, staff supervision, computer technology, community relations, grievance and litigation, travel, student services, and outreach programs.

Advisory Groups to the Dean:

COE Dean's Council: This group is comprised of COE Directors and Chairs and Dean's staff who advises the Dean in administrative, academic, and operational matters.

External Advisory Councils: These groups are comprised of educational constituents comprised of business, government and academic representatives who advise and work with the Dean on various academic and educational issues. These groups comprise of the Hawai'i State Teacher Standards Board (HTSB), Teacher Education Coordinating Committee (TECC), the Business Roundtable and others.

ADMINISTRATIVE SERVICES OFFICE – Org code: MAASED

In conjunction with the Dean, this office advises, manages, and administers:

- a. Budget development, allocation, and administration
- b. Accounting for resources
- c. Procurement and property management
- d. Personnel
- e. Other logistical support services

OFFICE OF THE ASSOCIATE DEAN OF ACADEMIC AFFAIRS–Org Code: MAAAED

Under the direction of the Dean, this office is responsible for planning, organizing, and administering:

- a. Academic program/course development, approval and evaluation
- b. Professional development for faculty and staff
- c. Facilities
- d. Assessment, accreditation and accountability
- e. Student academic services

Office of Student Academic Services – Org code: MASSED

Under the guidelines of the Associate Dean for Academic Affairs:

- a. Administers the functions of recruitment, application, selection, and admission of undergraduate and teacher licensure students and maintains accurate student records.
- b. Provides advising services, career guidance, and placement services to all students in the College.
- c. Conducts institutional research studies for program planning.

OUTREACH PROGRAMS – Org code: MAORED

Working with the Dean, this office plans, organizes, and implements:

- a. Delivery of College programs to the neighbor islands, remote areas on Oahu and other service areas via a mix of distance education initiatives and traditional delivery services which includes on-line programs and services
- b. Partnerships with appropriate educational agencies to support students at a distance.
- c. Professional development activities/programs for College faculty to infuse appropriate learning technologies throughout College programs
- d. College Collaboration Center oversight
- e. Manages and provides the College of Education with technical assistance in the areas of computer and classroom equipment, software, and student needs and requirements
- f. Works with other UH departments and external clients on mutually advantageous technological opportunities.



OFFICE OF THE DEAN

INSTRUCTIONAL UNITS
Org Code: MAIUED

STATE OF HAWAII
UNIVERSITY OF HAWAII
UNIVERSITY OF HAWAII AT MĀNOA
OFFICE OF THE VICE CHANCELLOR FOR
ACADEMIC AFFAIRS
COLLEGE OF EDUCATION
INSTRUCTIONAL UNITS
ORGANIZATION CHART
CHART II

INSTITUTE FOR TEACHER EDUCATION
Org code: MAITE

Chair (appointed from Faculty positions)
Secretary II, SR 14, #12977 1.00

Instructional Faculty: 29.00
#82160, #82229, #82235, #82288,
#82360, #82387, #82484, #82664,
#82678, #82820, #83204, #83299,
#83389, #84090, #84117, #84353,
#84407, #85189, #85192, #85194,
#85197, #85200, #85205, #85236,
#85254, #85284, #85294, #85299,
#99500F 2/

Specialist Type Faculty: 7.00
#82154 #83196, #83954, #84048,
#84065, #84529, #85204

Graduate Assistants: 85188T 0.50T

DEPARTMENT OF KINESIOLOGY AND REHABILITATION SCIENCE
Org code: MAKRS

Chair (appointed from Faculty positions)
Secretary II, SR 14, #7470 1.00

Instructional Faculty: 13.00
#82083, #82528, #82578, #82710,
#82861, #83131, #83425, #84352,
#84381, #84517, #85199, #85249, #85256

DEPARTMENT OF EDUCATIONAL ADMINISTRATION
Org code: MAEDEA

Chair (appointed from Faculty positions)
Academic Support Sp, PBA #81005 1.00

Instructional Faculty: 7.00
#82006, #82075, #82347
#84437, #85195, #85206, #85054 1/

DEPARTMENT OF EDUCATIONAL FOUNDATIONS
Org code: MAEDEF

Chair (appointed from Faculty positions)
Secretary II, SR 14, #13672 1.00

Instructional Faculty: 8.00
#82093, #83922, #83952,
#84659, #84835, #85184, #85297, #85301

DEPARTMENT OF SPECIAL EDUCATION
Org code: MASPED

Chair (appointed from Faculty positions)
Academic Support Sp, PBA, #79746 1.00

Instructional Faculty: 18.00
#82069, #82088, #82095, #82319,
#82479, #82575, #82894, #83923,
#83987, #84261, #84307, #84625,
#85187, #85193, #85196, #85220,
#85292, #85293

Specialist Type Faculty: 2.00
#85221, #85222

DEPARTMENT OF CURRICULUM STUDIES
Org code: MAEDCS

Chair (appointed from Faculty positions)

Educational Specialist, PBB, #78031 1.00

Instructional Faculty: 12.00
#82043, #82144, #82174, #83335, #83473, #83672,
#84141, #84527, #84544, #84680, #85207, #85225

Specialist Type Faculty: 5.00
#82632, #82755, #84191, #85203, #85303

DEPARTMENT OF EDUCATIONAL PSYCHOLOGY
Org code: MAEDEP

Chair (appointed from Faculty positions)
Secretary II, SR 14, #11895 1.00

Instructional Faculty: 7.00
#82105, #82193, #82276, #82617,
#84004, #84129, #85286

DEPARTMENT OF LEARNING DESIGN AND TECHNOLOGY
Org code: MAETEC

Chair (appointed from Faculty positions)
Secretary II, SR14, #15747 1.00
Adm & Fiscal Supp Sp, PBA #80971 1.00

Instructional Faculty: 8.00
#82571, #82963, #83872, #84608,
#85201, #85224, #85255, #85288

Specialist Type Faculty: 2.00
#84789, #85296

CHART TOTAL: PERM TEMP
General Funds: 127.00 0.50

1/ #85054 in Dept of Educational Admin abolished, pending re-establishment
2/ #99500F in Institute for Teacher Education pending establishment

STATE OF HAWAII
UNIVERSITY OF HAWAII
UNIVERSITY OF HAWAII AT MANOA
OFFICE OF THE VICE CHANCELLOR FOR ACADEMIC AFFAIRS
COLLEGE OF EDUCATION
INSTRUCTIONAL UNITS

FUNCTIONAL STATEMENT

INSTRUCTIONAL UNITS – Org Code: MAIUED

Under the direction of the Dean, listed are the departments.

Department of Curriculum Studies – Org code: MAEDCS

- a. Provides graduate-level programs leading to M.Ed. in curriculum studies, Ph.D. specialization in curriculum and instruction, and M.Ed. in early childhood education.
- b. Provides instruction to support teacher preparation programs.

Department of Educational Administration – Org code: MAEDEA

- a. Provides graduate-level programs leading to M.Ed. in educational administration and Ph.D. specializations in educational administration and educational policy studies (jointly with Educational Foundations).
- b. Provides programs to prepare educational administrators and supervisors for administrative positions in K-12 and higher education.

Department of Educational Foundations – Org code: MAEDEF

- a. Provides graduate-level programs leading to M.Ed. in educational foundations and Ph.D. specializations in educational foundations, global and international education, and educational policy studies (jointly with Educational Administration).
- b. Provides instruction in educational foundations to support teacher preparation programs.

Department of Educational Psychology – Org code: MAEDEP

- a. Provides graduate-level programs leading to M.Ed. and Ph.D. in educational psychology to prepare individuals to conduct basic or applied research and evaluation in public and private educational settings.
- b. Provides instruction in educational psychology to support teacher preparation programs.

Department of Learning Design and Technology – Org code: MAETEC

- a. Provides graduate-level programs leading to M.Ed. and Ph.D. in learning design and technology to prepare individuals to optimize opportunities for learning of and through diverse technologies and media.
- b. Provides instruction in learning design and technology to support teacher preparation programs.

Institute for Teacher Education - Org code: MAITE

Provides teacher preparation and initial licensure programs as follows:

- a. Bachelor of Elementary Education (BEEd)
- b. Bachelor of Secondary Education (BEEd)
- c. Bachelor of Science in Health and Physical Education (BS)
- d. Post-baccalaureate Certificate in Secondary Education (PBCSE)
- e. Master of Education in Teaching (MEdT)

Department of Kinesiology and Rehabilitation Science - Org code: MAKRS

Provides undergraduate- and graduate-level programs as follows:

- a. Bachelor of Science (BS)
- b. Master of Science (MS) in Athletic Training
- c. Master of Science (MS) in Kinesiology and Rehabilitation Science
- d. PhD specialization in Kinesiology

Department of Special Education - Org code: MASPED

Provides undergraduate- and graduate-level programs to provide identification, assessment, and intervention strategies for persons with disabilities as follows:

- a. Post-baccalaureate Certificate in Special Education (PBSPED)
- b. Master of Education (MEd) in Special Education (Emphasis in mild/moderate disabilities or severe disabilities/autism)
- c. PhD Specialization in Exceptionalities

Provides undergraduate and graduate instruction in special education to support teacher preparation programs

Instructional units also:

- a. Provide professional development (e.g., courses, workshops, consultations) to assist education professionals in maintaining currency of knowledge, research, and practice in their fields.
- b. Share in development of program policy, curriculum, standards, and evaluation.
- c. Facilitate research and training related to teaching and learning.

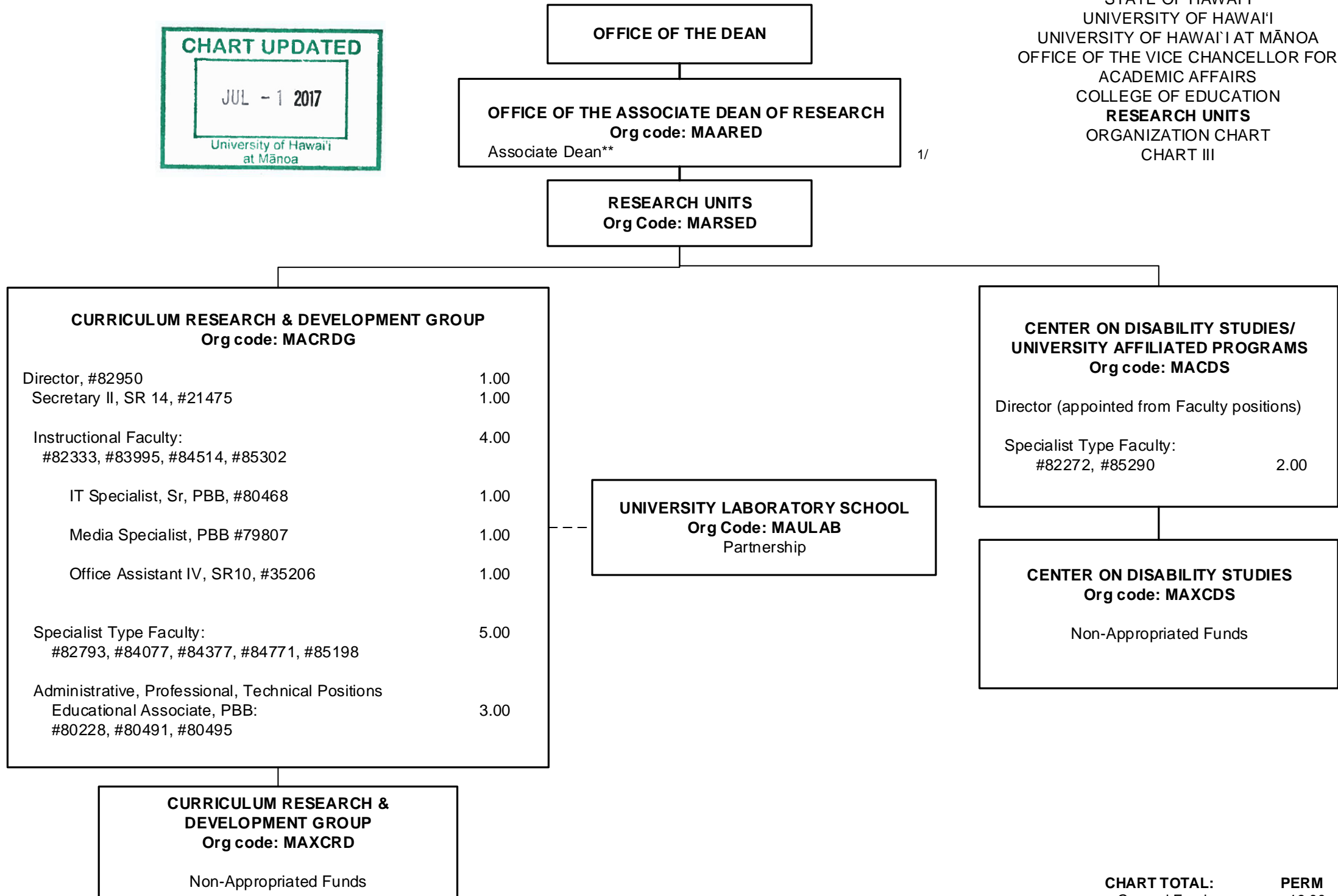


CHART TOTAL: **PERM** **TEMP**
 General Funds: 19.00 - -

STATE OF HAWAI'I
UNIVERSITY OF HAWAI'I
UNIVERSITY OF HAWAI'I AT MANOA
OFFICE OF THE VICE CHANCELLOR FOR ACADEMIC AFFAIRS
COLLEGE OF EDUCATION
RESEARCH UNITS

FUNCTIONAL STATEMENT

OFFICE OF THE ASSOCIATE DEAN OF RESEARCH – Org Code: MAARED

Under the direction of the Dean, this office is responsible for planning, organizing, and administering:

- a. Grant development, writing, and administration
- b. Coordination between academic programs and research projects
- c. Review of research units
- d. Conducts institutional research studies for program planning
- e. Tracks legislative initiatives that influence the College

RESEARCH UNITS – Org Code: MARSED

Curriculum Research & Development Group – Org code: MACRDG

- a. Conducts research and designs and tests more adequate models for educational programs.
- b. Serves the State school system in its programs of curriculum and student and teacher materials.
- c. Evaluates promising curriculum innovations and disseminates the information to schools.
- d. Provides a research base, including a laboratory school, for a variety of educational research and development programs.
- e. Conducts research on the process of curriculum and school change.

University Laboratory School – Org Code: MAULAB

The University Laboratory School is a public charter school that operates in partnership with the UHM Curriculum Research and Develop Group under an agreement with its Local School Board. The school serves as an experimental site for researching and developing innovation in teaching, learning, and assessment in grades K-12.

Curriculum Research & Development Group – Non-appropriated funds – Org Code: MAXCRD

The CRDG receives many extramural projects to meet the goals as stated above.

Center on Disability Studies/University Affiliated Programs - Org code: MACDS

Supports the quality of life, community inclusion, and self-determination of all persons with disabilities and their families by:

- a. Providing interdisciplinary training and student mentorship, through targeted course-work and certificate programs at the undergraduate and graduate levels,
- b. Conducting interdisciplinary research, demonstration, evaluation projects impacting upon policy, procedure and practice across special health, human service and education disciplines,
- c. Conducting interdisciplinary community and university service activities which result in an improved quality of life for persons with special health, human service and education needs,
- d. Developing research products, training materials, and media software/video formats,

- e. Planning and conducting interdisciplinary national and regional conferences, institutes, and forums,
- f. Disseminating information regarding research-based practices in the State of Hawai‘i, the Pacific Region, the U.S. mainland, and internationally.

Center on Disability Studies – Non-appropriated funds – Org Code:
MAXCDS

The CDS receives many extramural projects and funding to meet the goals of the Center as stated above.