



UH RECYCLES

THE OBJECTIVE

Achieve sustainability by reducing labor and resources for waste collection, and disposal while increasing recycling and decreasing our carbon footprint as we develop awareness throughout our island community.



UH RECYCLES

THE GOALS

- Reduce waste collection costs by 50%
- Reduce waste disposal by 30%
- Reduce carbon emissions by 52%
- Increase recycling 50%
- Develop University awareness and behavioral attitude
- Increase revenue from recycling commodities



UH RECYCLES

THE ACTION ITEMS

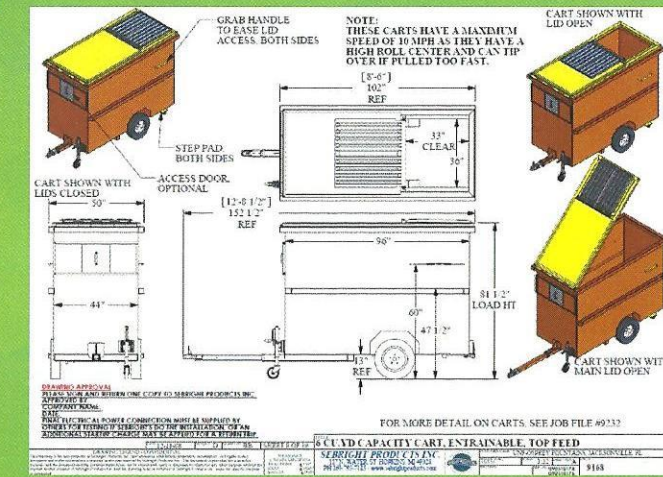
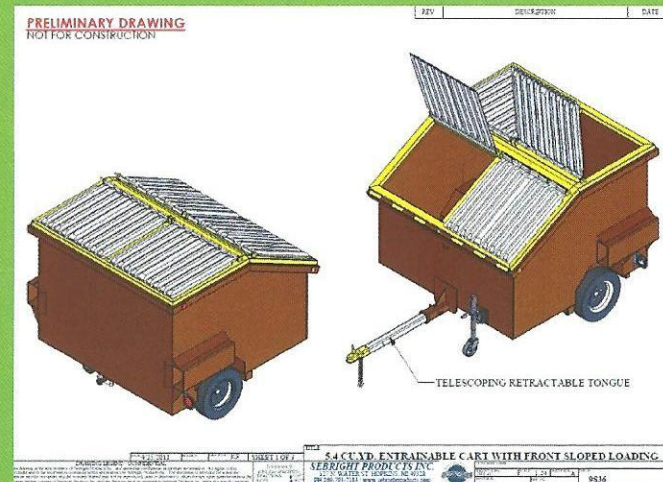
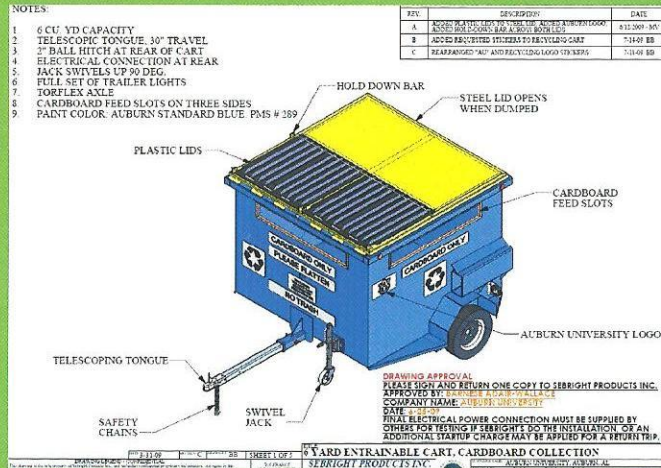
- Bring all waste collection under one department head
- Reduce labor and automate where possible
- Replace existing rear load system with centralized compaction system
- Expand recycling to service all buildings
- Develop a single stream recycling disposal system

Proposed site



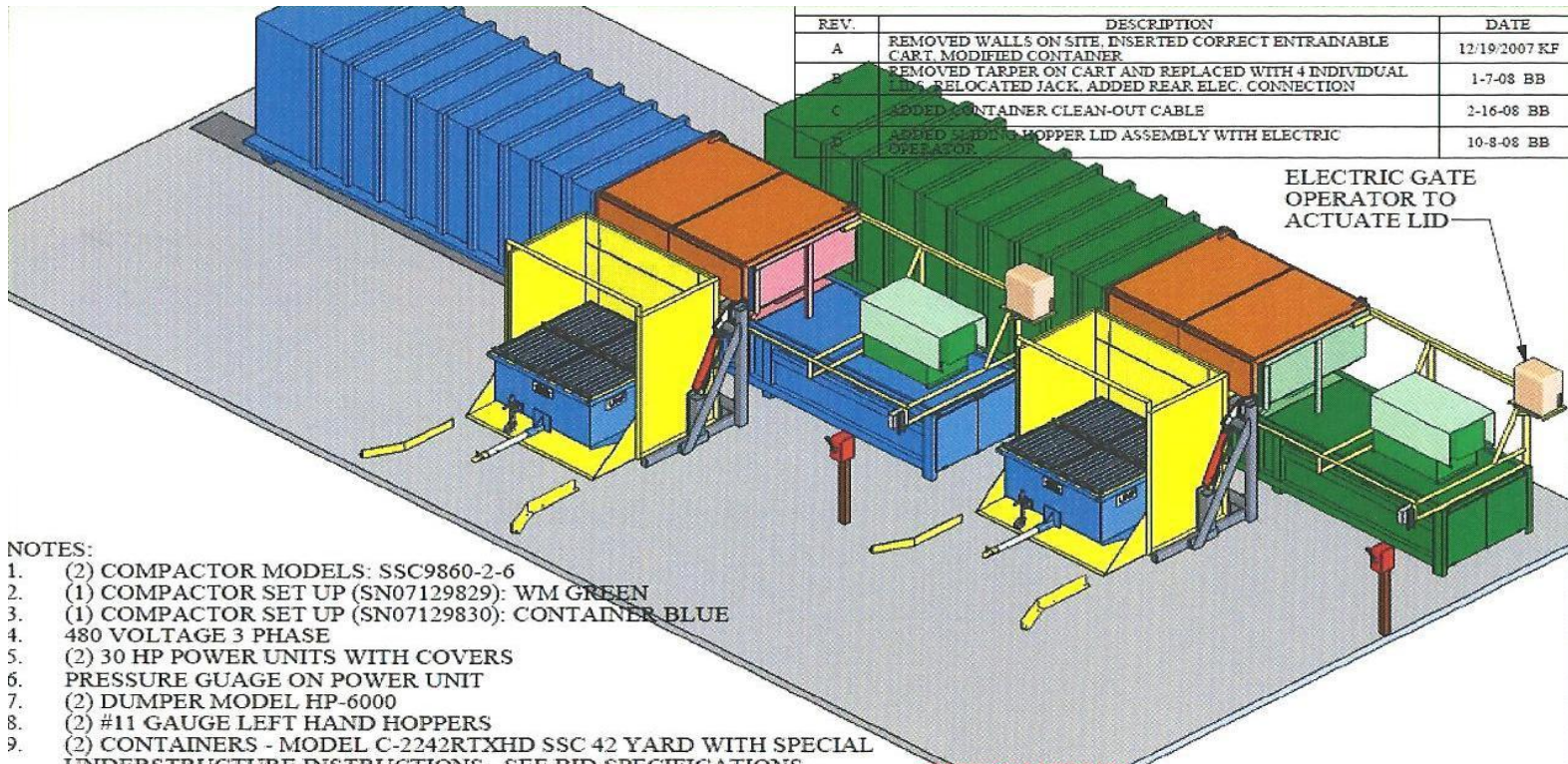
Solid Waste Handling Solutions: Equipment

Uniform waste collection equipment for maximum handling efficiency and cost effectiveness



Cardboard
 Trash
 Toter pickup
 Trash room carts

Mini Transfer Station



REV.	DESCRIPTION	DATE
A	REMOVED WALLS ON SITE, INSERTED CORRECT ENTRAINABLE CART, MODIFIED CONTAINER	12/19/2007 KF
B	REMOVED TAPER ON CART AND REPLACED WITH 4 INDIVIDUAL LIDS, RELOCATED JACK, ADDED REAR ELEC. CONNECTION	1-7-08 BB
C	ADDED CONTAINER CLEAN-OUT CABLE	2-16-08 BB
D	ADDED LID TO HOPPER LID ASSEMBLY WITH ELECTRIC OPERATOR	10-8-08 BB

ELECTRIC GATE OPERATOR TO ACTUATE LID

NOTES:

- (2) COMPACTOR MODELS: SSC9860-2-6
- (1) COMPACTOR SET UP (SN07129829): WM GREEN
- (1) COMPACTOR SET UP (SN07129830): CONTAINER BLUE
- 480 VOLTAGE 3 PHASE
- (2) 30 HP POWER UNITS WITH COVERS
- PRESSURE GAUGE ON POWER UNIT
- (2) DUMPER MODEL HP-6000
- (2) #11 GAUGE LEFT HAND HOPPERS
- (2) CONTAINERS - MODEL C-2242RTXHD SSC 42 YARD WITH SPECIAL UNDERSTRUCTURE INSTRUCTIONS - SEE BID SPECIFICATIONS - STANDARD CABLE AND AMPLIROLL
- (2) CONTAINER GUIDE ISLANDS - 6" TALL
- PRESSURES SET AT 1500 PSI NEAR FULL, 1750 PSI FULL, 2000 PSI AT BOOST
- (17) ENTRAINABLE CARTS BY SEBRIGHT - (7) PAINTED WM GREEN AND (10) PAINTED CONTAINER BLUE - SEE JOB #8164 FOR CART DETAILS

DRAWING APPROVAL
 PLEASE SIGN AND RETURN ONE COPY TO SEBRIGHT PRODUCTS INC.
 APPROVED BY: _____
 COMPANY NAME: _____
 DATE: _____
 FINAL ELECTRICAL POWER CONNECTION MUST BE SUPPLIED BY OTHERS FOR TESTING IF SEBRIGHT'S DO THE INSTALLATION, OR AN ADDITIONAL STARTUP CHARGE MAY BE APPLIED FOR A RETURN TRIP

DATE: 4/20/06	REVISION: D	DRAWN BY: DE	SHEET 1 OF 9	TITLE: SALES LAYOUT FOR GREG CANESTRAIGHT / DIETER KRETSCHY
DRAWING LEGEND - CONFIDENTIAL				SEBRIGHT PRODUCTS INC. 127 N. WATER ST. HOPKINS, ME 04928 PH 269-793-7183 / www.sebrightproducts.com
<small>This drawing is the sole property of Sebright Products Inc., and contains confidential proprietary information. All rights in this document and the information contained herein are reserved by Sebright Products Inc. This document is provided for a specific purpose, and the contents thereof may not be reproduced, used or disclosed to others for any other purpose without the express written consent of Sebright Products Inc. and the drawing must be returned to Sebright Products Inc. when the specific purpose is completed.</small>				CUSTOMER NAME: UNIVERSITY OF NORTH FLORIDA / TRANSFER SITE PROJECT NO.: 1-30 DRAWING NO.: 07129829 SCALE: A SHEET NO.: 8461