

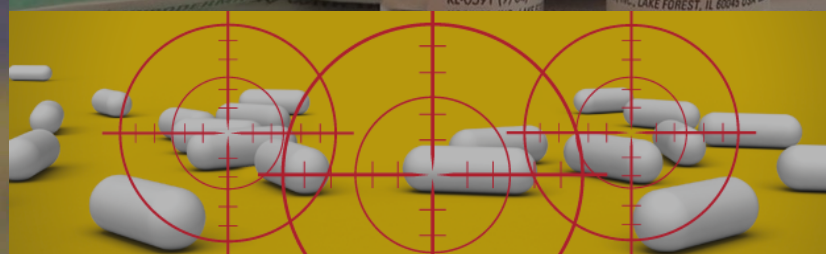
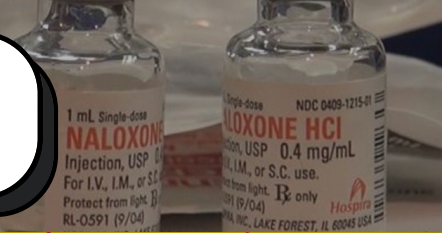


UNIVERSITY OF HAWAII AT MANOA
Department of Social Work

THOMPSON SCHOOL
SOCIAL WORK & PUBLIC HEALTH

C3-OD2A

CARE COORDINATION
CASE MANAGEMENT
CAPACITY BUILDING
OVERDOSE DATA TO
ACTION (OD2A) PROJECT



APPLYING A MACRO LENS TO UNDERSTAND THE BARRIERS TO OPIOID USE DISORDER TREATMENT

THURSDAY, APRIL 15TH, 2021
12-1 PM

Intended Audience: Social Workers and other allied health and human service professionals

Presented by Corey Davis,
Network for Public Health Law



This program is approved by the National Association of Social Workers - Hawai'i Chapter (Approval HI62792021-729) for up to 1 Social Work continuing education contact hour(s).

Objectives:

- Summarize legal and policy barriers that impact access to opioid use disorder treatment nationally and locally.
- Describe the implications of barriers to treatment of opioids.
- Outline strategies to reduce legal and policy barriers.

The University of Hawaii at Manoa, Myron B. Thompson School of Social Work (NASWHI-CEP-002) has been designated an approved provider of social work continuing education contact hours by the National Association of Social Workers Hawai'i Chapter. The University of Hawaii at Manoa, Myron B. Thompson School of Social Work maintains responsibility for the program.



Register via QR Code or visit <http://go.hawaii.edu/Jc6>

This webinar is funded by the CDC Overdose Data to Action Project (OD2A) through the Hawai'i State Department of Health, Behavioral Health Administration.

If you think you are in need of an accommodation for a disability, please contact sswcepd@hawaii.edu or (808) 956-9885 at least one week prior to the event.

